

H 烁曜实业
HERRAJES INDUSTRY

Shanghai Herraes Industry Co.,Ltd.

Addr:518,1234 New Songjiang Rd.Songjiang Dist.Shanghai,China

Tel: +86 21 56689666

Fax: +86 21 56697666

Email:sales@heindustry.com

www.heindustry.com

www.powerlinehardware.net



WE ARE
POWER
ON THE LINE

HERRAJES®
上海烁曜实业

COMPANY PROFILE

Shanghai Herrajes Industry Co., Ltd is a ISO 9001 certificated company that specializes in the manufacture and export of galvanized pole line hardware for electrical transmission and distribution lines that comply with the norms and standards required. We have the most sophisticated and modern technology in the field of electrical products, also have qualified professionals offering benefits to customers, quality and super competitive prices in the market.

Our goal is to establish a mutually beneficial relationship with our customers, and our products offering contain a full service to ensure the complete satisfaction to the parties concerned, regarding the desired supply, quotation, and delivery.

Total quality and superior services and products offered by Shanghai Herrajes become decisive factors to our success.

Shanghai Herrajes will be a leading company worldwide for electrical equipment used in power transmission and distribution lines.

Shanghai Herrajes Industry Co., Ltd es una empresa que cuenta con el sistema de certificación de calidad ISO9001, que se especializa en la fabricación y exportación de herrajes eléctricos galvanizados para líneas de transmisión eléctrica, que cumplen con las normas y estándares necesarios, contamos con la tecnología mas sofisticada y moderna en el campo de los productos eléctricos, ademas cuenta con profesionales calificados ofreciendo a los clientes beneficios, calidad y precios super competitivos en el mercado.

Nuestro objetivo es establecer una relación mutuamente beneficiosa con nuestros clientes, ofreciendo además de nuestros productos un servicio íntegro que garantice la satisfacción total de las partes interesadas, desde la cotización, el suministro deseado y la entrega.

La calidad total y superior de los servicios y productos que brinda Shanghai Herrajes se convierte en un factor decisivo para nuestro éxito.

Shanghai Herrajes, será una empresa líder a nivel mundial para todo tipo de materiales eléctricos utilizadas en Lineas de Transmisión Eléctrica, contando con un talento humano socialmente responsable para generar clientes satisfechos, multiplicadores y permanentes.



CONTENTS

1 Fasteners	01
2 Eyelets and Eyenuts	17
3 Link Fittings	19
4 Clamps	26
5 Crossarms	33
6 Insulator Pins and Studs	38
7 Shackles	40
8 Clevis	41
9 Pole Bands	42
10 Guy Attachments	44
11 Splicing Fittings	46
12 Vibration Dampers	49
13 Meter Boxesd	50
14 Insulation Piercing Connector	51
15 Pre-insulated Sleeve	55
16 LV-Anchoring Bracket&Clamp	58
17 Aluminium Lug	67
18 Polymer Insulator	69
19 Arrester	70
20 High-voltage Fuse Cut Out	71

1.1.1 Hex Bolts

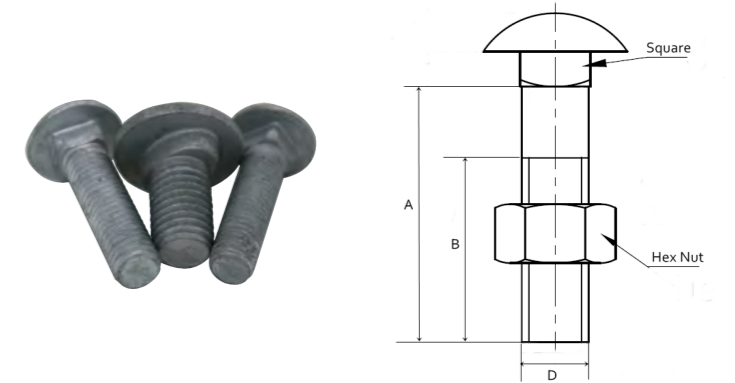
Material: carbon steel hot dip galvanized to ASTM A153/ASTM A123.
Producing standard: IEEE C-135.1



HE Code	Dimensions				Hex Nut(s)	Wt. kg.
	A	B	Dia.	D(mm)		
HB1/2-3	3"	3"	1/2"	12.7	1	0.113
HB1/2-4	4"	4"	1/2"	12.7	1	0.15
HB1/2-5	5"	5"	1/2"	12.7	1	0.188
HB1/2-6	6"	6"	1/2"	12.7	1	0.2
HB1/2-7	7"	6"	1/2"	12.7	1	0.233
HB1/2-8	8"	6"	1/2"	12.7	1	0.25
HB1/2-9	9"	6"	1/2"	12.7	1	0.281
HB1/2-12	12"	6"	1/2"	12.7	1	0.35
HB5/8-4	4"	4"	5/8"	15.87	1	0.22
HB5/8-5	5"	5"	5/8"	15.87	1	0.275
HB5/8-6	6"	6"	5/8"	15.87	1	0.3
HB5/8-7	7"	6"	5/8"	15.87	1	0.35
HB5/8-8	8"	6"	5/8"	15.87	1	0.37
HB5/8-9	9"	6"	5/8"	15.87	1	0.416
HB5/8-10	10"	6"	5/8"	15.87	1	0.52
HB5/8-11	11"	6"	5/8"	15.87	1	0.572
HB5/8-12	12"	6"	5/8"	15.87	1	0.6
HB5/8-13	13"	6"	5/8"	15.87	1	0.645
HB5/8-14	14"	6"	5/8"	15.87	1	0.67
HB5/8-15	15"	6"	5/8"	15.87	1	0.718
HB3/4-2	2"	2"	3/4"	19	1	0.159
HB3/4-5	5"	5"	3/4"	19	1	0.329
HB3/4-6	6"	6"	3/4"	19	1	0.45
HB3/4-7	7"	6"	3/4"	19	1	0.525
HB3/4-8	8"	6"	3/4"	19	1	0.56
HB3/4-9	9"	6"	3/4"	19	1	0.63
HB3/4-10	10"	6"	3/4"	19	1	0.7
HB3/4-11	11"	6"	3/4"	19	1	0.733
HB3/4-12	12"	6"	3/4"	19	1	0.8
HB3/4-13	13"	6"	3/4"	19	1	0.871
HB3/4-14	14"	6"	3/4"	19	1	0.95
HB3/4-15	15"	6"	3/4"	19	1	1.018
HB3/4-16	16"	6"	3/4"	19	1	1.05
HB3/4-17	17"	6"	3/4"	19	1	1.086
HB3/4-18	18"	6"	3/4"	19	1	1.15
HB3/4-20	20"	6"	3/4"	19	1	1.25

1.1.2 Carriage Bolts

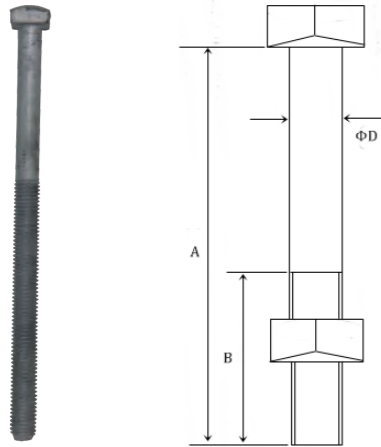
Material: carbon steel hot dip galvanized to ASTM A153/ASTM A123.
Producing standard: IEEE C-135.1



HE Code	Dimensions			Tensile Strength (lbs)	Wt. kg
	A	B	D		
CB3/8-2	2" (50.8)	2" (50.8)	3/8" (9.53)	4,250	0.036
CB3/8-3	3" (76.2)	2" (50.8)	3/8" (9.53)	4,250	0.054
CB3/8-4	4" (101.6)	3" (76.2)	3/8" (9.53)	4,250	0.064
CB3/8-4 1/2	4.1/2" (114.3)	3" (76.2)	3/8" (9.53)	4,250	0.073
CB3/8-5	5" (127.0)	3" (76.2)	3/8" (9.53)	4,250	0.077
CB3/8-5 1/2	5 1/2" (139.7)	3" (76.2)	3/8" (9.53)	4,250	0.082
CB3/8-6	6" (152.4)	3" (76.2)	3/8" (9.53)	4,250	0.086
CB3/8-7	7" (177.8)	3" (76.2)	3/8" (9.53)	4,250	0.100
CB3/8-8	8" (203.2)	3" (76.2)	3/8" (9.53)	4,250	0.109
CB3/8-10	10" (254)	3" (76.2)	3/8" (9.53)	4,250	0.132
CB3/8-12	12" (304.8)	3" (76.2)	3/8" (9.53)	4,250	0.154
CB1/2-2	2" (50.8)	2" (50.8)	1/2" (13)	7,800	0.064
CB1/2-2 1/2	2 1/2" (63.5)	2 1/2" (63.5)	1/2" (13)	7,800	0.073
CB1/2-3	3" (76.2)	2.1/2" (63.5)	1/2" (13)	7,800	0.077
CB1/2-4	4" (101.6)	4" (101.6)	1/2" (13)	7,800	0.104
CB1/2-4 1/2	4.1/2" (114.3)	3" (76.2)	1/2" (13)	7,800	0.136
CB1/2-5	5" (127.0)	3" (76.2)	1/2" (13)	7,800	0.145
CB1/2-5 1/2	5 1/2" (139.7)	3" (76.2)	1/2" (13)	7,800	0.159
CB1/2-6	6" (152.4)	3" (76.2)	1/2" (13)	7,800	0.163
CB1/2-7	7" (177.8)	4" (101.6)	1/2" (13)	7,800	0.186
CB1/2-8	8" (203.2)	4" (101.6)	1/2" (13)	7,800	0.209
CB5/8-11/2	1 1/2" (38.1)	1 1/2" (38.1)	5/8" (16)	12400	0.086
CB5/8-2	2" (50.8)	1.5/8" (41)	5/8" (16)	12400	0.109
CB5/8-2 1/2	2.1/2" (63.5)	1.5/8" (41)	5/8" (16)	12400	0.141
CB5/8-3	3" (76.2)	2.1/2" (63.5)	5/8" (16)	12400	0.163
CB5/8-4	4" (101.6)	3" (76.2)	5/8" (16)	12400	0.172
CB5/8-5	5" (127.0)	3" (76.2)	5/8" (16)	12400	0.240
CB5/8-5 1/2	5 1/2" (127.0)	3" (76.2)	5/8" (16)	12400	0.209
CB5/8-6	6" (152.4)	3" (76.2)	5/8" (16)	12400	0.236
CB5/8-7	7" (177.8)	4" (101.6)	5/8" (16)	12400	0.245
CB5/8-8	8" (203.2)	4" (101.6)	5/8" (16)	12400	0.263

1.1.3 Square Head Bolts

Material: carbon steel hot dip galvanized to ASTM A153/ASTM A123.
Producing standard: IEEE C-135.1



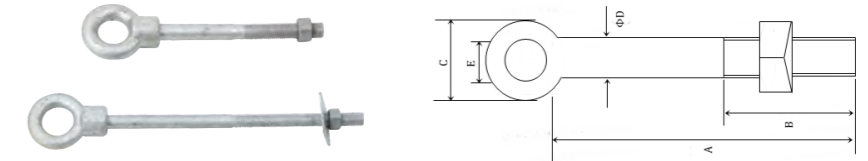
HE Code	A	Dimensions B	Dia. ΦD	Wt./1000 kgs
SB5/8-9	9" (228.6)	4" (101.6)	5/8"(16)	381.02
SB5/8-10	10" (254.0)	6" (152.4)	5/8"(16)	449.05
SB5/8-12	12" (304.8)	6" (152.4)	5/8"(16)	508.02
SB5/8-14	14" (355.6)	6" (152.4)	5/8"(16)	571.52
SB5/8-16	16" (406.4)	6" (152.4)	5/8"(16)	607.81
SB5/8-18	18" (457.2)	6" (152.4)	5/8"(16)	675.85
SB5/8-20	20" (508.0)	6" (152.4)	5/8"(16)	743.89
SB5/8-22	22" (558.8)	6" (152.4)	5/8"(16)	798.32
SB5/8-24	24" (609.6)	6" (152.4)	5/8"(16)	879.96
SB3/4-12	12" (304.8)	6" (152.4)	3/4"(19)	752.96
SB3/4-14	14" (355.6)	6" (152.4)	3/4"(19)	852.75
SB3/4-16	16" (406.4)	6" (152.4)	3/4"(19)	1020.58
SB3/4-18	18" (457.2)	6" (152.4)	3/4"(19)	1052.33
SB3/4-20	20" (508.0)	6" (152.4)	3/4"(19)	1143.05
SB3/4-22	22" (558.8)	6" (152.4)	3/4"(19)	1215.62

HE Code	A	Dimensions B	Dia. ΦD	Wt./1000 kgs
SB3/8-2	2" (50.8)	1 3/4" (44.5)	3/8"(9.5)	32.60
SB3/8-3	3" (76.2)	2 3/4" (69.8)	3/8"(9.5)	46.70
SB3/8-4	4" (101.6)	3" (76.2)	3/8"(9.5)	68.04
SB3/8-4 1/2	4 1/2" (114.3)	3" (76.2)	3/8"(9.5)	78.02
SB3/8-5	5" (127)	3" (76.2)	3/8"(9.5)	85.27
SB3/8-5 1/2	5 1/2" (139.7)	3" (76.2)	3/8"(9.5)	88.90
SB3/8-6	6" (152.4)	3" (76.2)	3/8"(9.5)	97.98
SB3/8-7	7" (177.8)	4" (101.6)	3/8"(9.5)	99.79
SB3/8-8	8" (203.2)	4" (101.6)	3/8"(9.5)	115.00
SB1/2-1 1/2	1 1/2" (38)	1" (25)	1/2"(12.7)	79.83
SB1/2-2	2" (50.8)	1 3/4" (44.5)	1/2"(12.7)	90.72
SB1/2-2 1/2	2 1/2" (63.5)	2 1/4" (57.1)	1/2"(12.7)	99.79
SB1/2-3	3" (76.2)	2 3/4" (69.8)	1/2"(12.7)	113.40
SB1/2-4	4" (101.6)	3" (76.2)	1/2"(12.7)	131.54
SB1/2-4 1/2	4 1/2" (114.3)	3" (76.2)	1/2"(12.7)	149.68
SB1/2-5	5" (127.0)	3" (76.2)	1/2"(12.7)	158.76
SB1/2-5 1/2	5 1/2" (139.7)	3" (76.2)	1/2"(12.7)	170.10
SB1/2-6	6" (152.4)	3" (76.2)	1/2"(12.7)	176.90
SB1/2-7	7" (177.8)	4" (101.6)	1/2"(12.7)	217.72
SB1/2-8	8" (203.2)	4" (101.6)	1/2"(12.7)	222.26
SB1/2-9	9" (228.6)	4" (101.6)	1/2"(12.7)	258.55
SB1/2-10	10" (254.0)	6" (152.4)	1/2"(12.7)	272.15

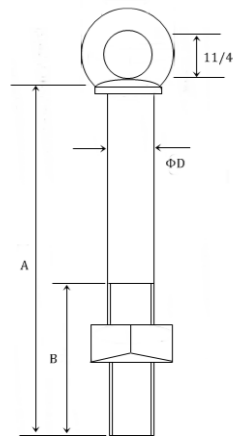
SB3/4-24	24" (609.6)	6" (152.4)	3/4"(19)	1378.91
SB3/4-26	26" (660.4)	6" (152.4)	3/4"(19)	1397.06
SB3/4-28	28" (711.2)	6" (152.4)	3/4"(19)	1450.00
SB3/4-30	30" (762.0)	6" (152.4)	3/4"(19)	1520.00
SB7/8-12	12" (304.8)	6" (152.4)	7/8"(22)	998.00
SB7/8-14	14" (355.6)	6" (152.4)	7/8"(22)	1288.20
SB7/8-16	16" (406.4)	6" (152.4)	7/8"(22)	1433.34
SB7/8-18	18" (457.2)	6" (152.4)	7/8"(22)	1596.64
SB7/8-20	20" (508.0)	6" (152.4)	7/8"(22)	1769.00
SB7/8-22	22" (558.8)	6" (152.4)	7/8"(22)	1927.76
SB7/8-24	24" (609.6)	6" (152.4)	7/8"(22)	2050.23

1.1.4 Round Eye Bolts

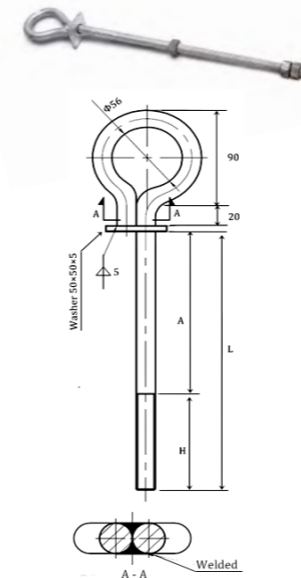
Material: carbon steel hot dip galvanized to ASTM A153/ASTM A123.
Producing standard: ANSI C-135.4



HE Code	A	Dimensions B	C	E	Dia. ΦD	Tensile Strength (lbs)	Wt. kg
EBR1/2-6	6" (152.4)	4" (101.6)	1 1/4"(31.8)	11/16"(17)	1/2"(12.7)	7800	0.18
EBR1/2-8	8" (203.2)	4" (101.6)	1 1/4"(31.8)	11/16"(17)	1/2"(12.7)	7800	0.23
EBR1/2-10	10" (254.0)	6" (152.4)	1 1/4"(31.8)	11/16"(17)	1/2"(12.7)	7800	0.28
EBR1/2-12	12" (304.8)	6" (152.4)	1 1/4"(31.8)	11/16"(17)	1/2"(12.7)	7800	0.33
EBR1/2-14	14" (355.6)	6" (152.4)	1 1/4"(31.8)	11/16"(17)	1/2"(12.7)	7800	0.38
EBR1/2-16	16" (406.4)	6" (152.4)	1 1/4"(31.8)	11/16"(17)	1/2"(12.7)	7800	0.43
EBR1/2-18	18" (457.2)	6" (152.4)	1 1/4"(31.8)	11/16"(17)	1/2"(12.7)	7800	0.49
EBR1/2-20	20" (508.0)	6" (152.4)	1 1/4"(31.8)	11/16"(17)	1/2"(12.7)	7800	0.53
EBR5/8-4	4" (101.6)	3" (76.2)	1 5/8"(41)	13/16"(20.6)	5/8"(16)	12400	0.22
EBR5/8-5	5" (127.0)	3" (76.2)	1 5/8"(41)	13/16"(20.6)	5/8"(16)	12400	0.27
EBR5/8-6	6" (152.4)	3" (76.2)	1 5/8"(41)	13/16"(20.6)	5/8"(16)	12400	0.31
EBR5/8-8	8" (203.2)	4" (101.6)	1 5/8"(41)	13/16"(20.6)	5/8"(16)	12400	0.39
EBR5/8-10	10" (254.0)	6" (152.4)	1 5/8"(41)	13/16"(20.6)	5/8"(16)	12400	0.46
EBR5/8-12	12" (304.8)	6" (152.4)	1 5/8"(41)	13/16"(20.6)	5/8"(16)	12400	0.56
EBR5/8-14	14" (355.6)	6" (152.4)	1 5/8"(41)	13/16"(20.6)	5/8"(16)	12400	0.60
EBR5/8-16	16" (406.4)	6" (152.4)	1 5/8"(41)	13/16"(20.6)	5/8"(16)	12400	0.68
EBR5/8-18	18" (457.2)	6" (152.4)	1 5/8"(41)	13/16"(20.6)	5/8"(16)	12400	0.76
EBR5/8-20	20" (508.0)	6" (152.4)	1 5/8"(41)	13/16"(20.6)	5/8"(16)	12400	0.85
EBR5/8-22	22" (558.8)	6" (152.4)	1 5/8"(41)	13/16"(20.6)	5/8"(16)	12400	0.91
EBR5/8-24	24" (609.6)	6" (152.4)	1 5/8"(41)	13/16"(20.6)	5/8"(16)	12400	1.00
EBR5/8-26	26" (660.4)	8" (203.2)	1 5/8"(41)	13/16"(20.6)	5/8"(16)	12400	1.07
EBR5/8-28	28" (711.2)	8" (203.2)	1 5/8"(41)	13/16"(20.6)	5/8"(16)	12400	1.14
EBR5/8-30	30" (762)	8" (203.2)	1 5/8"(41)	13/16"(20.6)	5/8"(16)	12400	1.22
EBR5/8-32	32" (812.8)	8" (203.2)	1 5/8"(41)	13/16"(20.6)	5/8"(16)	12400	1.31
EBR5/8-34	34" (863.6)	8" (203.2)	1 5/8"(41)	13/16"(20.6)	5/8"(16)	12400	1.39
EBR3/4-2	2" (50.8)	1 3/4" (44.5)	1 7/8"(47.6)	13/16"(20.6)	3/4"(19)	18350	0.36
EBR3/4-5	5" (127)	3" (76.2)	1 7/8"(47.6)	13/16"(20.6)	3/4"(19)	18350	0.40
EBR3/4-6	6" (152.4)	3" (76.2)	1 7/8"(47.6)	13/16"(20.6)	3/4"(19)	18350	0.48
EBR3/4-7	7" (177.8)	3" (76.2)	1 7/8"(47.6)	13/16"(20.6)	3/4"(19)	18350	0.53
EBR3/4-8	8" (203.2)	4" (101.6)	1 7/8"(47.6)	13/16"(20.6)	3/4"(19)	18350	0.58
EBR3/4-10	10" (254.0)	6" (152.4)	1 7/8"(47.6)	13/16"(20.6)	3/4"(19)	18350	0.68
EBR3/4-12	12" (304.8)	6" (152.4)	1 7/8"(47.6)	13/16"(20.6)	3/4"(19)	18350	0.79
EBR3/4-14	14" (355.6)	6" (152.4)	1 7/8"(47.6)	13/16"(20.6)	3/4"(19)	18350	0.90
EBR3/4-16	16" (406.4)	6" (152.4)	1 7/8"(47.6)	13/16"(20.6)	3/4"(19)	18350	0.99
EBR3/4-18	18" (457.2)	6" (152.4)	1 7/8"(47.6)	13/16"(20.6)	3/4"(19)	18350	1.12
EBR3/4-20	20" (508.0)	6" (152.4)	1 7/8"(47.6)	13/16"(20.6)	3/4"(19)	18350	1.23
EBR3/4-22	22" (558.8)	6" (152.4)	1 7/8"(47.6)	13/16"(20.6)	3/4"(19)	18350	1.34
EBR3/4-24	24" (609.6)	6" (152.4)	1 7/8"(47.6)	13/16"(20.6)	3/4"(19)	18350	1.46
EBR3/4-26	26" (660.4)	6" (152.4)	1 7/8"(47.6)	13/16"(20.6)	3/4"(19)	18350	1.56
EBR3/4-28	28" (711.2)	6" (152.4)	1 7/8"(47.6)	13/16"(20.6)	3/4"(19)	18350	1.67
EBR3/4-30	30" (762.0)	6" (152.4)	1 7/8"(47.6)	13/16"(20.6)	3/4"(19)	18350	1.78
EBR7/8-5	5" (127)	3" (76.2)	2 1/8"(54)	15/16"(23.8)	7/8"(22)	25400	0.49
EBR7/8-6	6" (152.4)	3" (76.2)	2 1/8"(54)	15/16"(23.8)	7/8"(22)	25400	0.57
EBR7/8-7	7" (177.8)	3" (76.2)	2 1/8"(54)	15/16"(23.8)	7/8"(22)	25400	0.66
EBR7/8-8	8" (203.2)	4" (101.6)	2 1/8"(54)	15/16"(23.8)	7/8"(22)	25400	0.74
EBR7/8-10	10" (254.0)	4" (101.6)	2 1/8"(54)	15/16"(23.8)	7/8"(22)	25400	0.91
EBR7/8-12	12" (304.8)	4" (101.6)	2 1/8"(54)	15/16"(23.8)	7/8"(22)	25400	1.08
EBR7/8-14	14" (355.6)	6" (152.4)	2 1/8"(54)	15/16"(23.8)	7/8"(22)	25400	1.25
EBR7/8-16	16" (406.4)	6" (152.4)	2 1/8"(54)	15/16"(23.8)	7/8"(22)	25400	1.40
EBR7/8-18	18" (457.2)	6" (152.4)	2 1/8"(54)	15/16"(23.8)	7/8"(22)	25400	1.56
EBR7/8-20	20" (508.0)	6" (152.4)	2 1/8"(54)	15/16"(23.8)	7/8"(22)	25400	1.72
EBR7/8-22	22" (558.8)	6" (152.4)	2 1/8"(54)	15/16"(23.8)	7/8"(22)	25400	1.85
EBR7/8-24	24" (609.6)	6" (152.4)	2 1/8"(54)	15/16"(23.8)	7/8"(22)	25400	2.05
EBR7/8-26	26" (660.4)	8" (203.2)	2 1/8"(54)	15/16"(23.8)	7/8"(22)	25400	2.12

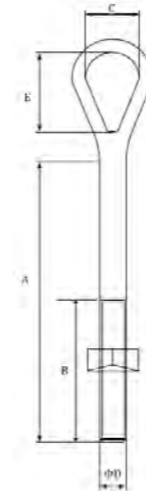


HE Code	Dimensions		Dia. ΦD	Tensile strength	
	A	B		lbs	kg
EBS1/2-4	4" (101.6)	3" (76.2)	1/2" (12.7)	7800	0.46
EBS1/2-5	5" (127.0)	3" (76.2)	1/2" (12.7)	7800	0.50
EBS1/2-6	6" (152.4)	4" (101.6)	1/2" (12.7)	7800	0.54
EBS1/2-7	7" (177.8)	4" (101.6)	1/2" (12.7)	7800	0.57
EBS1/2-8	8" (203.2)	4" (101.6)	1/2" (12.7)	7800	0.61
EBS1/2-10	10" (254.0)	6" (152.4)	1/2" (12.7)	7800	0.64
EBS1/2-12	12" (304.8)	6" (152.4)	1/2" (12.7)	7800	0.68
EBS5/8-4	4" (101.6)	3" (76.2)	5/8" (16)	12400	0.54
EBS5/8-6	6" (152.4)	3" (76.2)	5/8" (16)	12400	0.76
EBS5/8-8	8" (203.2)	4" (101.6)	5/8" (16)	12400	0.87
EBS5/8-10	10" (254.0)	6" (152.4)	5/8" (16)	12400	0.93
EBS5/8-12	12" (304.8)	6" (152.4)	5/8" (16)	12400	0.98
EBS5/8-14	14" (355.6)	6" (152.4)	5/8" (16)	12400	1.07
EBS5/8-16	16" (406.4)	6" (152.4)	5/8" (16)	12400	1.09
EBS5/8-18	18" (457.2)	6" (152.4)	5/8" (16)	12400	1.13
EBS5/8-20	20" (508.0)	6" (152.4)	5/8" (16)	12400	1.22
EBS5/8-22	22" (558.8)	6" (152.4)	5/8" (16)	12400	1.31
EBS5/8-24	24" (609.6)	6" (152.4)	5/8" (16)	12400	1.40
EBS3/4-4	4" (101.6)	3" (76.2)	3/4" (19)	18350	0.76
EBS3/4-6	6" (152.4)	3" (76.2)	3/4" (19)	18350	0.91
EBS3/4-8	8" (203.2)	4" (101.6)	3/4" (19)	18350	1.11
EBS3/4-10	10" (254.0)	6" (152.4)	3/4" (19)	18350	1.22
EBS3/4-12	12" (304.8)	6" (152.4)	3/4" (19)	18350	1.33
EBS3/4-14	14" (355.6)	6" (152.4)	3/4" (19)	18350	1.45
EBS3/4-16	16" (406.4)	6" (152.4)	3/4" (19)	18350	1.54
EBS3/4-18	18" (457.2)	6" (152.4)	3/4" (19)	18350	1.63
EBS3/4-20	20" (508.0)	6" (152.4)	3/4" (19)	18350	1.70
EBS3/4-22	22" (558.8)	6" (152.4)	3/4" (19)	18350	1.80
EBS3/4-24	24" (609.6)	6" (152.4)	3/4" (19)	18350	1.91
EBS3/4-26	26" (660.4)	6" (152.4)	3/4" (19)	18350	2.01
EBS3/4-28	28" (711.2)	6" (152.4)	3/4" (19)	18350	2.13
EBS7/8-10	10" (254.0)	4" (101.6)	7/8" (22)	25400	1.37
EBS7/8-12	12" (304.8)	4" (101.6)	7/8" (22)	25400	1.55
EBS7/8-14	14" (355.6)	6" (152.4)	7/8" (22)	25400	1.72
EBS7/8-16	16" (406.4)	6" (152.4)	7/8" (22)	25400	1.89
EBS7/8-18	18" (457.2)	6" (152.4)	7/8" (22)	25400	2.06
EBS7/8-20	20" (508.0)	6" (152.4)	7/8" (22)	25400	2.24
EBS7/8-22	22" (558.8)	6" (152.4)	7/8" (22)	25400	2.41
EBS7/8-24	24" (609.6)	6" (152.4)	7/8" (22)	25400	2.59
EBS7/8-26	26" (660.4)	8" (203.2)	7/8" (22)	25400	2.76
EBS7/8-28	28" (711.2)	8" (203.2)	7/8" (22)	25400	2.93
EBS7/8-30	30" (762)	8" (203.2)	7/8" (22)	25400	3.11
EBS7/8-32	32" (812.8)	8" (203.2)	7/8" (22)	25400	3.28
EBS7/8-34	34" (863.6)	8" (203.2)	7/8" (22)	25400	3.45
EBS7/8-36	36" (914.4)	8" (203.2)	7/8" (22)	25400	3.63



HE Code	Dia.	Dimensions			Hex Nut(s)
		A	H	L	
EBW5/8-7	5/8"	0	7	7	1
EBW5/8-8	5/8"	0	8	8	1
EBW5/8-9	5/8"	1	8	9	1
EBW5/8-10	5/8"	2	8	10	1
EBW5/8-11	5/8"	3	8	11	1
EBW5/8-12	5/8"	2	10	12	1
EBW5/8-14	5/8"	4	10	14	1
EBW5/8-15	5/8"	3	12	15	1
EBW5/8-17	5/8"	3	14	17	3
EBW3/4-9	3/4"	5	4	9	1
EBW3/4-10	3/4"	6	4	10	1
EBW3/4-11	3/4"	7	4	11	1
EBW3/4-12	3/4"	8	4	12	1
EBW3/4-15	3/4"	11	4	15	1
EBW3/4-17	3/4"	13	4	17	3

1.1.5 Oval Eye Bolts



HE Code	Dimensions				Dia. ΦD	Wt. kg
	A	B	C	E		
EBO1/2-8	8" (203.2)	4" (101.6)	1" (25.4)	1 1/2" (38.1)	1/2" (12.7)	0.35
EBO1/2-12	12" (304.8)	6" (152.4)	1" (25.4)	1 1/2" (38.1)	1/2" (12.7)	0.45
EBO5/8-6	6" (152.4)	3" (76.2)	1 1/2" (38.1)	2" (50)	5/8" (16)	0.45
EBO5/8-8	8" (203.2)	4" (101.6)	1 1/2" (38.1)	2" (50)	5/8" (16)	0.54
EBO5/8-9	9" (228.6)	4" (101.6)	1 1/2" (38.1)	2" (50)	5/8" (16)	0.56
EBO5/8-10	10" (254.0)	4" (101.6)	1 1/2" (38.1)	2" (50)	5/8" (16)	0.68
EBO5/8-12	12" (304.8)	6" (152.4)	1 1/2" (38.1)	2" (50)	5/8" (16)	0.76
EBO5/8-14	14" (355.6)	6" (152.4)	1 1/2" (38.1)	2" (50)	5/8" (16)	0.84
EBO5/8-16	16" (406.4)	6" (152.4)	1 1/2" (38.1)	2" (50)	5/8" (16)	0.93
EBO5/8-18	18" (457.2)	6" (152.4)	1 1/2" (38.1)	2" (50)	5/8" (16)	1.01
EBO5/8-20	20" (508)	6" (152.4)	1 1/2" (38.1)	2" (50)	5/8" (16)	1.13
EBO5/8-22	22" (558.8)	6" (152.4)	1 1/2" (38.1)	2" (50)	5/8" (16)	1.22
EBO5/8-24	24" (609.6)	6" (152.4)	1 1/2" (38.1)	2" (50)	5/8" (16)	1.32
EBO5/8-26	26" (660.4)	6" (152.4)	1 1/2" (38.1)	2" (50)	5/8" (16)	1.36
EBO5/8-30	30" (762)	6" (152.4)	1 1/2" (38.1)	2" (50)	5/8" (16)	1.43
EBO5/8-36	36" (914.4)	6" (152.4)	1 1/2" (38.1)	2" (50)	5/8" (16)	1.61
EBO3/4-4	4" (101.6)	4" (101.6)	1 1/2" (38.1)	2" (50)	3/4" (19.5)	0.39
EBO3/4-8	8" (203.2)	4" (101.6)	1 1/2" (38.1)	2" (50)	3/4" (19.5)	0.82
EBO3/4-10	10" (254.0)	4" (101.6)	1 1/2" (38.1)	2" (50)	3/4" (19.5)	1.02
EBO3/4-12	12" (304.8)	6" (152.4)	1 1/2" (38.1)	2" (50)	3/4" (19.5)	1.13
EBO3/4-14	14" (355.6)	6" (152.4)	1 1/2" (38.1)	2" (50)	3/4" (19.5)	1.25
EBO3/4-16	16" (406.4)	6" (152.4)	1 1/2" (38.1)	2" (50)	3/4" (19.5)	1.34
EBO3/4-18	18" (457.2)	6" (152.4)	1 1/2" (38.1)	2" (50)	3/4" (19.5)	1.45
EBO3/4-20	20" (508)	6" (152.4)	1 1/2" (38.1)	2" (50)	3/4" (19.5)	1.50
EBO3/4-22	22" (558.8)	6" (152.4)	1 1/2" (38.1)	2" (50)	3/4" (19.5)	1.56
EBO3/4-24	24" (609.6)	6" (152.4)	1 1/2" (38.1)	2" (50)	3/4" (19.5)	1.63

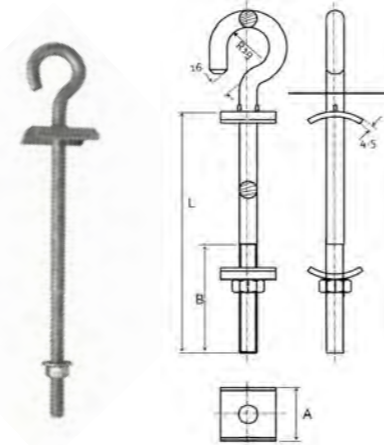
Material: carbon steel hot dip galvanized to ASTM A153/ASTM A123.

Producing standard: ANSI C-135.4

1.1.6 Hook Bolts

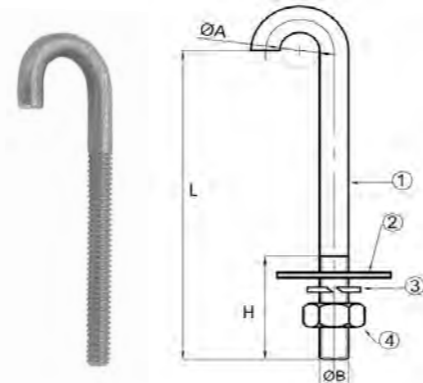
HE Code	Dimensions			Bolt Dia.	Wt. kg
	A	B	L		
JHB16-156	50	102	156	16(5/8")	0.68
JHB16-180	50	102	180	16(5/8")	0.73
JHB16-203	50	152	203	16(5/8")	0.82
JHB16-228	50	152	228	16(5/8")	0.91
JHB16-254	50	152	254	16(5/8")	0.96
JHB16-280	50	152	280	16(5/8")	1.05
JHB16-305	50	152	305	16(5/8")	1.17
JHB16-330	50	152	330	16(5/8")	1.32
JHB16-356	50	152	356	16(5/8")	1.45

M18, M20, M24 share the same data as M16.



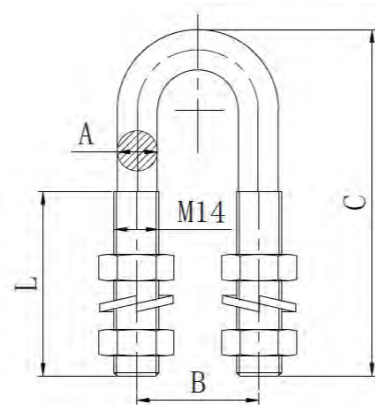
HE Code	Dimensions			
	φA	L	H	φB
JB13-140	25	140(5 1/2")	51(2")	12.7(1/2")
JB13-229	25	229(9")	76(3")	12.7(1/2")
JB13-292	25	292(11 1/2")	152(6")	12.7(1/2")
JB13-305-35	35	305(12")	102(4")	12.7(1/2")
JB13-305-60	60	305(12")	102(4")	12.7(1/2")
JB13-305-90	90	305(12")	102(4")	12.7(1/2")
JB13-305-115	115	305(12")	102(4")	12.7(1/2")

- Diameter: 12.7mm
- 40*40*5mm steel square washer H.D.G
- Steel spring washer H.D.G
- Steel hex nuts H.D.G

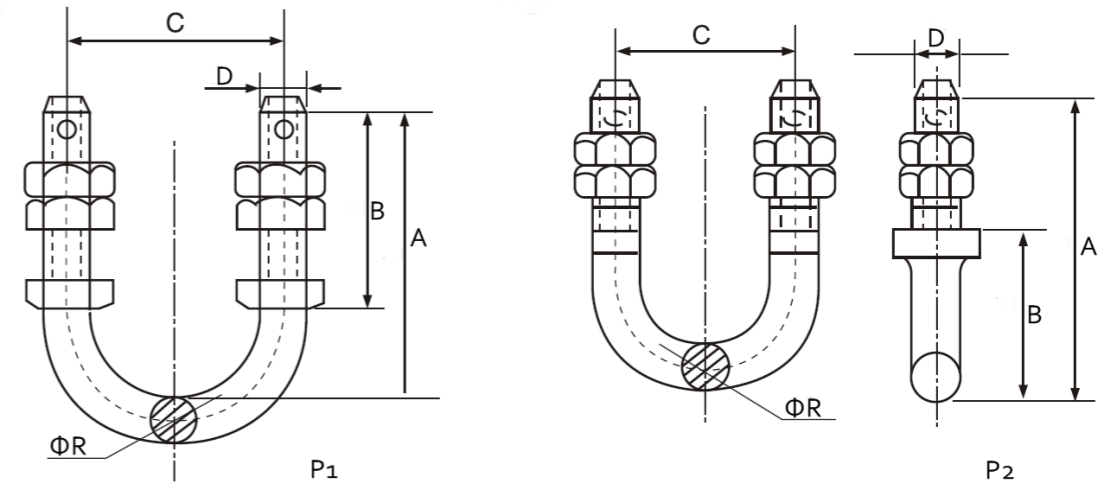


Material: carbon steel hot dip galvanized to ASTM A153/ ASTM A123.
Thread standard: ANSI / ASME B 1. 1

1.1.7 U Bolts



HE Code	Dimensions(IN)				Wt. kg	Ultimate strength
	A	B	C	L		
UB1/2-414	1/2"	1 1/2"	4 1/4"	1 1/2"	0.526	16000
UB1/2-414	1/2"	1 1/2"	4 1/4"	1 3/4"	0.526	16000



HE Code	Dimensions(mm)					P	Wt. kg	Tensile strength Kn
	A	B	C	D	φR			
UB12-80	80	45	40	12	12	P1	0.38	35
UB14-90	90	60	40	14	14	P1	0.42	35
UB14-120	120	70	70	14	14	P1	0.46	40
UB16-130	130	65	70	16	16	P1	0.66	50
UB18-130	130	80	70	18	18	P1	0.86	60
UB18-130-1	130	60	80	18	18	P1	0.88	60
UB18-140	140	60	90	18	18	P1	0.9	60
UB20-130	130	90	70	20	20	P1	1.2	70
UB20-140	140	70	80	20	20	P1	1.7	70
UB20-150	150	90	90	20	20	P1	1.28	70
UB22-150	150	90	80	22	22	P1	1.3	100
UB22-160	160	100	90	22	22	P1	1.34	100
UB18-130-2	130	39	80	18	18	P2	0.88	60
UB20-140-1	140	43	80	20	20	P2	1.08	70
UB22-150-1	150	45	80	22	22	P2	1.28	100

Material: carbon steel hot dip galvanized to ASTM A153/ASTM A123.

1.1.8 Spool Bolts



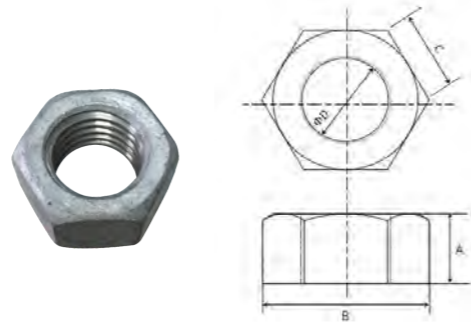
HE Code	Overall length	Dimensions		Bolt Dia.	Type	Wt. kg
		Shank length	Thread length			
SBS5/8-8	12 3/4"	8"	4"	5/8"	Single	0.626
SBS5/8-9	13 3/4"	9"	4"	5/8"	Single	0.653
SBS5/8-10	14 1/2"	10"	4"	5/8"	Single	0.757
SBS5/8-12	16 1/2"	12"	6"	5/8"	Single	0.821
SBS5/8-14	18 3/4"	14"	6"	5/8"	Single	0.889
SBD5/8-8	14"	8"	4"	5/8"	Double	0.753
SBD5/8-9	15"	9"	4"	5/8"	Double	0.735
SBD5/8-10	16"	10"	4"	5/8"	Double	0.862
SBD5/8-12	18"	12"	6"	5/8"	Double	0.898
SBD5/8-14	20"	14"	6"	5/8"	Double	0.925

Material: carbon steel hot dip galvanized to ASTM A153/ ASTM A123.
Producing standard: ANSI C-135.31

1.2.1 Hex Nuts

HE Code	Bolt Dia.	Dimensions			Wt./1000 kg
		ΦD	A	B	
HN1/4	1/4"	1/4"	7/32"	1/2"	3.33
HN3/8	3/8"	3/8"	21/64"	5/8"	9.07
HN1/2	1/2"	1/2"	7/16"	7/8"	18.14
HN5/8	5/8"	5/8"	35/64"	1"	40.82
HN3/4	3/4"	3/4"	21/32"	1 1/4"	45.36
HN7/8	7/8"	7/8"	49/64"	1 1/2"	90.72
HN1	1"	1"	7/8"	1 5/8"	122.47
HN1 1/4	1 1/4"	1 1/4"	1 3/32"	2 1/8"	249.47

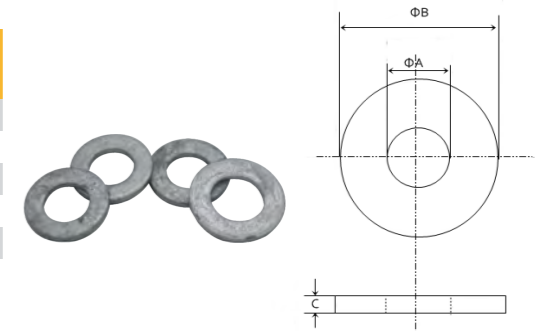
Material: carbon steel hot dip galvanized to ASTM A153/ASTM A123.
Producing standard: IEEE C-135.1



1.3.1 Flat Round Washers

HE Code	Bolt Dia.	Dimensions			Wt./1000 kg
		ΦA	ΦB	ΦC	
FW3/8	3/8"	7/16"	1"	3/32"	7.44
FW1/2	1/2"	9/16"	1 3/8"	7/64"	20.41
FW5/8	5/8"	11/16"	1 3/4"	9/64"	38.56
FW3/4	3/4"	13/16"	2"	5/32"	53.52
FW7/8	7/8"	15/16"	2"	1/4"	95.25
FW1	1"	1 1/16"	3"	1/4"	190.51

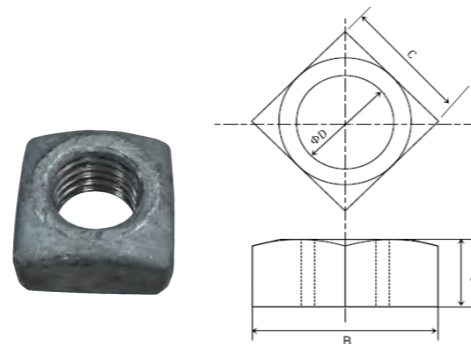
Material: carbon steel hot dip galvanized to ASTM A153/ASTM A123.
Producing standard: ANSI B18.22.1



1.2.2 Square Nuts

HE Code	ΦD	Dimensions			Wt./1000 kg
		A	B	C	
SN1/4	1/4"	7/32"	1/2"	7/16"	8.00
SN3/8	3/8"	21/64"	7/8"	5/8"	11.79
SN1/2	1/2"	7/16"	1 1/8"	13/16"	36.29
SN5/8	5/8"	35/64"	1 3/8"	1"	47.17
SN3/4	3/4"	21/32"	1 1/2"	1 1/8"	65.32
SN7/8	7/8"	49/64"	1 3/4"	1 5/16"	136.08
SN1	1"	7/8"	2"	1 1/2"	226.80

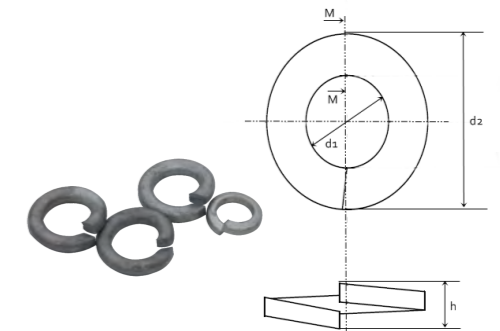
Material: carbon steel hot dip galvanized to ASTM A153/ASTM A123.
Producing standard: IEEE C-135.1



1.3.2 Split Lock Washers

HE Code	Bolt Dia.	Dimensions			Wt./1000 kg
		d1(mm)	d2mm)	h(mm)	
SLW3/8	3/8"	10.30	17.30	2.90	3.63
SLW1/2	1/2"	14.00	22.23	3.56	7.26
SLW5/8	5/8"	17.30	27.90	4.00	12.25
SLW3/4	3/4"	19.13	32.13	4.78	20.87
SLW7/8	7/8"	22.30	37.06	5.56	28.58

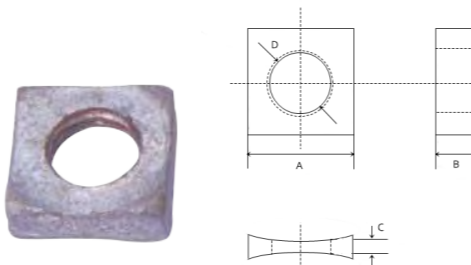
Material: carbon steel hot dip galvanized to ASTM A153/ASTM A123.
Producing standard: ANSI/ASME B18.21.1



1.2.3 Lock Nuts

HE Code	D	Dimensions			Wt./1000 kg
		A	B	C	
MFN3/8	3/8"	5/8"	1/4"	3/16"	5.67
MFN1/2	1/2"	13/16"	19/64"	3/16"	11.79
MFN5/8	5/8"	1"	3/8"	3/16"	20.14
MFN3/4	3/4"	1 1/8"	7/16"	3/16"	27.22
MFN7/8	7/8"	1 5/16"	15/32"	3/16"	38.56
MFN1	1"	1 1/2"	15/32"	3/16"	53.07

Material: carbon steel hot dip galvanized to ASTM A153/ASTM A123.
Producing standard: ANSI B18.2.2



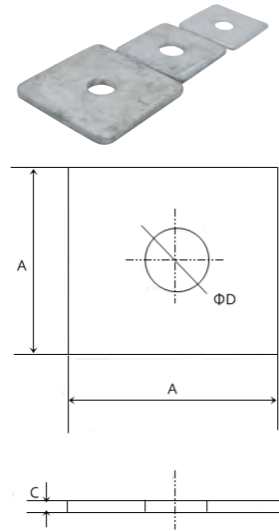
1.3.3 Spring Clip Washers

HE Code	Hole dia.	Dimensions		Wt./1000 kg
		Length	Bolt dia.	
SCW1/2	9/16"	2 1/2"	1/2"	104.33
SCW5/8	11/16"	3 3/4"	5/8"	453.59
SCW3/4	13/16"	3 3/4"	3/4"	444.52
SCW7/8	15/16"	3 1/2"	7/8"	394.62
SCW1	1 1/16"	3 1/2"	1"	385.55
SCW1 1/4	1 3/8"	3 3/4"	1 1/4"	412.77

Material: carbon steel hot dip galvanized to ASTM A153/ASTM A123.



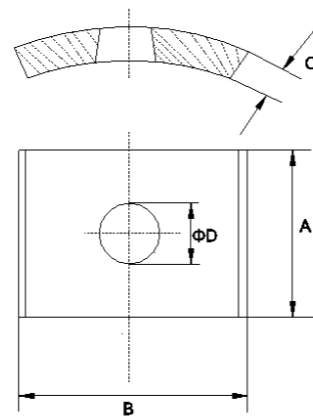
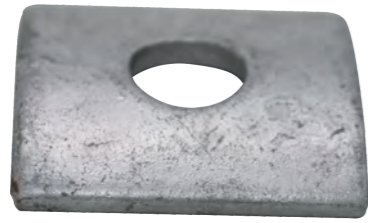
1.3.4 Square Washers



HE Code	Dimensions			Bolt dia.	Wt./1000 kg
	A	B	ΦD		
SW1/2-2	2"	1/8"	9/16"	1/2"	58.97
SW5/8-2	2"	1/8"	11/16"	5/8"	54.43
SW5/8-2-1	2"	3/16"	11/16"	5/8"	95.25
SW5/8-21/4	2 1/4"	3/16"	11/16"	5/8"	108.86
SW3/4-21/4	2 1/4"	3/16"	13/16"	3/4"	104.33
SW3/4-3	3"	1/4"	11/16"	3/4"	136.08
SW3/4-3-1	3"	3/16"	13/16"	3/4"	231.33
SW3/4-3-2	3"	1/4"	13/16"	3/4"	290.30
SW3/4-3-3	3"	1/4"	7/8"	3/4"	299.37
SW3/4-4	4"	3/16"	13/16"	3/4"	394.62
SW3/4-4-1	4"	1/2"	13/16"	3/4"	1070.47
SW3/4-4-2	4"	1/4"	7/8"	3/4"	544.31
SW7/8-4	4"	1/4"	15/16"	7/8"	535.24
SW1-4	4"	1/2"	1 1/8"	1"	1034.19

Material: carbon steel hot dip galvanized to ASTM A153/ASTM A123.

1.3.5 Square Curved Washers



HE Code	Dimensions			ΦD	Bolt dia.	Wt./1000 kg
	A	B	C			
SWC5/8-2	2"	2"	3/16"	11/16"	5/8"	113.40
SWC5/8-21/4	2 1/4"	2 1/4"	3/16"	11/16"	5/8"	140.61
SWC5/8-21/2	2 1/2"	2 1/2"	3/16"	11/16"	5/8"	163.29
SWC5/8-3	3"	3"	1/4"	11/16"	5/8"	281.23
SWC3/4-3	3"	3"	1/4"	13/16"	3/4"	299.37
SWC3/4-3-1	3"	3"	1/4"	7/8"	3/4"	281.23
SWC3/4-31/4	3 1/4"	3 1/4"	1/4"	13/16"	3/4"	344.73
SWC3/4-4	4"	4"	3/16"	13/16"	3/4"	371.94
SWC7/8-4	4"	4"	1/4"	15/16"	7/8"	544.31
SWC1-31/2	3 1/2"	3 1/2"	3/8"	1 1/8"	1"	272.15

Material: carbon steel hot dip galvanized to ASTM A153/ASTM A123.

1.4.1 Full Threaded Rods



HE Code	Dimensions		Min tensile strength lbs	Wt. kg
	L	D		
DAB1/2-12	12" (305)	1/2" (13)	7800	0.340
DAB1/2-14	14" (356)	1/2" (13)	7800	0.381
DAB1/2-16	16" (406)	1/2" (13)	7800	0.426
DAB1/2-20	20" (508)	1/2" (13)	7800	0.508
DAB1/2-22	22" (559)	1/2" (13)	7800	0.549
DAB1/2-24	24" (610)	1/2" (13)	7800	0.590
DAB5/8-10	10" (254)	5/8" (16)	12400	0.544
DAB5/8-12	12" (305)	5/8" (16)	12400	0.599
DAB5/8-14	14" (356)	5/8" (16)	12400	0.653
DAB5/8-16	16" (406)	5/8" (16)	12400	0.744
DAB5/8-18	18" (457)	5/8" (16)	12400	0.816
DAB5/8-20	20" (508)	5/8" (16)	12400	0.871
DAB5/8-22	22" (559)	5/8" (16)	12400	0.962
DAB5/8-24	24" (610)	5/8" (16)	12400	1.016
DAB5/8-26	26" (660)	5/8" (16)	12400	1.089
DAB5/8-28	28" (711)	5/8" (16)	12400	1.161
DAB5/8-30	30" (762)	5/8" (16)	12400	1.343
DAB3/4-12	12" (305)	3/4" (19)	18350	0.889
DAB3/4-14	14" (356)	3/4" (19)	18350	0.998
DAB3/4-16	16" (406)	3/4" (19)	18350	1.089
DAB3/4-18	18" (457)	3/4" (19)	18350	1.179
DAB3/4-20	20" (508)	3/4" (19)	18350	1.288
DAB3/4-22	22" (559)	3/4" (19)	18350	1.379
DAB3/4-24	24" (610)	3/4" (19)	18350	1.524
DAB3/4-26	26" (660)	3/4" (19)	18350	1.565
DAB3/4-28	28" (711)	3/4" (19)	18350	1.656
DAB3/4-30	30" (762)	3/4" (19)	18350	1.751
DAB3/4-32	32" (812)	3/4" (19)	18350	1.755
DAB3/4-34	34" (863)	3/4" (19)	18350	1.851

HE Code	Dimensions		Min tensile strength lbs	Wt. kgs
	L	D		
DAB3/4-36	36" (914)	3/4" (19)	18350	1.946
DAB3/4-38	38" (965)	3/4" (19)	18350	2.037
DAB3/4-40	40" (1016)	3/4" (19)	18350	2.132
DAB3/4-42	42" (1066)	3/4" (19)	18350	2.227
DAB7/8-12	12" (305)	7/8" (22)	25400	1.188
2DAB7/8-14	14" (356)	7/8" (22)	25400	1.320
DAB7/8-16	16" (406)	7/8" (22)	25400	1.451
DAB7/8-18	18" (457)	7/8" (22)	25400	1.583
DAB7/8-20	20" (508)	7/8" (22)	25400	1.715
DAB7/8-22	22" (559)	7/8" (22)	25400	1.842
DAB7/8-24	24" (610)	7/8" (22)	25400	1.973
DAB7/8-26	26" (660)	7/8" (22)	25400	2.105
DAB7/8-28	28" (711)	7/8" (22)	25400	2.236
DAB7/8-30	30" (762)	7/8" (22)	25400	2.368
DAB7/8-32	32" (812)	7/8" (22)	25400	2.499
DAB7/8-34	34" (863)	7/8" (22)	25400	2.631
DAB7/8-36	36" (914)	7/8" (22)	25400	2.762
DAB7/8-38	38" (965)	7/8" (22)	25400	2.894
DAB7/8-40	40" (1016)	7/8" (22)	25400	3.025
DAB7/8-42	42" (1066)	7/8" (22)	25400	3.157
DAB1-12	12" (305)	1" (25.4)	33500	1.615
DAB1-14	14" (356)	1" (25.4)	33500	1.778
DAB1-16	16" (406)	1" (25.4)	33500	1.955
DAB1-18	18" (457)	1" (25.4)	33500	2.123
DAB1-20	20" (508)	1" (25.4)	33500	2.295
DAB1-22	22" (559)	1" (25.4)	33500	2.468
DAB1-24	24" (610)	1" (25.4)	33500	2.635
DAB1-26	26" (660)	1" (25.4)	33500	2.808
DAB1-28	28" (711)	1" (25.4)	33500	2.976
DAB1-30	30" (762)	1" (25.4)	33500	3.148
DAB1-32	32" (812)	1" (25.4)	33500	3.320
DAB1-34	34" (863)	1" (25.4)	33500	3.488
DAB1-36	36" (914)	1" (25.4)	33500	3.660
DAB1-38	38" (965)	1" (25.4)	33500	3.828
DAB1-40	40" (1016)	1" (25.4)	33500	4.001
DAB1-42	42" (1066)	1" (25.4)	33500	4.173
DAB11/4-12	12" (305)	1 1/4" (31.75)	53300	2.123
DAB11/4-14	14" (356)	1 1/4" (31.75)	53300	2.440
DAB11/4-16	16" (406)	1 1/4" (31.75)	53300	2.753
DAB11/4-18	18" (457)	1 1/4" (31.75)	53300	3.071
DAB11/4-20	20" (508)	1 1/4" (31.75)	53300	3.388
DAB11/4-22	22" (559)	1 1/4" (31.75)	53300	3.706
DAB11/4-24	24" (610)	1 1/4" (31.75)	53300	4.023
DAB11/4-26	26" (660)	1 1/4" (31.75)	53300	4.336
DAB11/4-28	28" (711)	1 1/4" (31.75)	53300	4.654
DAB11/4-30	30" (762)	1 1/4" (31.75)	53300	4.971
DAB11/4-32	32" (812)	1 1/4" (31.75)	53300	5.289
DAB11/4-34	34" (863)	1 1/4" (31.75)	53300	5.606
DAB11/4-36	36" (914)	1 1/4" (31.75)	53300	5.919
DAB11/4-38	38" (965)	1 1/4" (31.75)	53300	6.237
DAB11/4-40	40" (1016)	1 1/4" (31.75)	53300	6.554
DAB11/4-4	42" (1066)	1 1/4" (31.75)	53300	6.872

Material: carbon steel hot dip galvanized to ASTM A153/ASTM A123. Producing standard: IEEE C-135.1

1.4.2 Double End Rods



Material: carbon steel hot dip galvanized to ASTM A153/ASTM A123.
Producing standard: IEEE C-135.1

HE Code	Dimensions		Min tensile strength lbs	Wt. kg
	L	D		
DER5/8-12	12" (305)	5/8" (16)	12400	0.617
DER5/8-14	14" (356)	5/8" (16)	12400	0.644
DER5/8-16	16" (406)	5/8" (16)	12400	0.726
DER5/8-18	18" (457)	5/8" (16)	12400	0.785
DER5/8-20	20" (508)	5/8" (16)	12400	0.848
DER5/8-22	22" (559)	5/8" (16)	12400	0.925
DER5/8-24	24" (610)	5/8" (16)	12400	1.016
DER5/8-26	26" (660)	5/8" (16)	12400	1.070
DER5/8-28	28" (711)	5/8" (16)	12400	1.161
DER5/8-30	30" (762)	5/8" (16)	12400	1.197
DER5/8-32	32" (812)	5/8" (16)	12400	1.288
DER5/8-34	34" (863)	5/8" (16)	12400	1.352
DER5/8-36	36" (914)	5/8" (16)	12400	1.474
DER5/8-38	38" (965)	5/8" (16)	12400	1.538
DER5/8-40	40" (1016)	5/8" (16)	12400	1.592
DER5/8-42	42" (1066)	5/8" (16)	12400	1.656
DER3/4-12	12" (305)	3/4" (19)	18350	0.889
DER3/4-14	14" (356)	3/4" (19)	18350	0.998
DER3/4-16	16" (406)	3/4" (19)	18350	1.089
DER3/4-18	18" (457)	3/4" (19)	18350	1.143
DER3/4-20	20" (508)	3/4" (19)	18350	1.247
DER3/4-22	22" (559)	3/4" (19)	18350	1.361
DER3/4-24	24" (610)	3/4" (19)	18350	1.420
DER3/4-26	26" (660)	3/4" (19)	18350	1.524
DER3/4-28	28" (711)	3/4" (19)	18350	1.642
DER3/4-30	30" (762)	3/4" (19)	18350	1.760
DER3/4-32	32" (812)	3/4" (19)	18350	1.878
DER3/4-34	34" (863)	3/4" (19)	18350	1.996
DER3/4-36	36" (914)	3/4" (19)	18350	2.109
DER3/4-38	38" (965)	3/4" (19)	18350	2.227
DER3/4-40	40" (1016)	3/4" (19)	18350	2.345
DER3/4-42	42" (1066)	3/4" (19)	18350	2.463
DER7/8-12	12" (305)	7/8" (22)	25400	1.007
DER7/8-14	14" (356)	7/8" (22)	25400	1.161
DER7/8-16	16" (406)	7/8" (22)	25400	1.315
DER7/8-18	18" (457)	7/8" (22)	25400	1.470
DER7/8-20	20" (508)	7/8" (22)	25400	1.624
DER7/8-22	22" (559)	7/8" (22)	25400	1.778
DER7/8-24	24" (610)	7/8" (22)	25400	1.928
DER7/8-26	26" (660)	7/8" (22)	25400	2.064

HE Code	Dimensions		Min tensile strength lbs	Wt. kg
	L	D		
DER7/8-28	28" (711)	7/8" (22)	25400	2.236
DER7/8-30	30" (762)	7/8" (22)	25400	2.390
DER7/8-32	32" (812)	7/8" (22)	25400	2.545
DER7/8-34	34" (863)	7/8" (22)	25400	2.699
DER7/8-36	36" (914)	7/8" (22)	25400	2.853
DER7/8-38	38" (965)	7/8" (22)	25400	3.003
DER7/8-40	40" (1016)	7/8" (22)	25400	3.157
DER7/8-42	42" (1066)	7/8" (22)	25400	3.311
DER1-12	12" (305)	1" (25.4)	33500	1.347
DER1-14	14" (356)	1" (25.4)	33500	1.547
DER1-16	16" (406)	1" (25.4)	33500	1.746
DER1-18	18" (457)	1" (25.4)	33500	1.946
DER1-20	20" (508)	1" (25.4)	33500	2.145
DER1-22	22" (559)	1" (25.4)	33500	2.345
DER1-24	24" (610)	1" (25.4)	33500	2.545
DER1-26	26" (660)	1" (25.4)	33500	2.744
DER1-28	28" (711)	1" (25.4)	33500	2.944
DER1-30	30" (762)	1" (25.4)	33500	3.143
DER1-32	32" (812)	1" (25.4)	33500	3.343
DER1-34	34" (863)	1" (25.4)	33500	3.543
DER1-36	36" (914)	1" (25.4)	33500	3.742
DER1-38	38" (965)	1" (25.4)	33500	3.942
DER1-40	40" (1016)	1" (25.4)	33500	4.141
DER1-42	42" (1066)	1" (25.4)	33500	4.341
DER11/4-12	12" (305)	1 1/4" (31.75)	53300	2.123
DER11/4-14	14" (356)	1 1/4" (31.75)	53300	2.440
DER11/4-16	16" (406)	1 1/4" (31.75)	53300	2.753
DER11/4-18	18" (457)	1 1/4" (31.75)	53300	3.071
DER11/4-20	20" (508)	1 1/4" (31.75)	53300	3.388
DER11/4-22	22" (559)	1 1/4" (31.75)	53300	3.706
DER11/4-24	24" (610)	1 1/4" (31.75)	53300	4.023
DER11/4-26	26" (660)	1 1/4" (31.75)	53300	4.336
DER11/4-28	28" (711)	1 1/4" (31.75)	53300	4.654
DER11/4-30	30" (762)	1 1/4" (31.75)	53300	4.971
DER11/4-32	32" (812)	1 1/4" (31.75)	53300	5.289
DER11/4-34	34" (863)	1 1/4" (31.75)	53300	5.606
DER11/4-36	36" (914)	1 1/4" (31.75)	53300	5.919
DER11/4-38	38" (965)	1 1/4" (31.75)	53300	6.237
DER11/4-40	40" (1016)	1 1/4" (31.75)	53300	6.554
DER11/4-42	42" (1066)	1 1/4" (31.75)	53300	6.872

1.4.3 Ground Rods



HE Code	Dimensions		Wt. kgs
	Dia. in	Length. ft.	
GR1/2-5	1/2"	5'	1.50
GR1/2-6	1/2"	6'	1.79
GR1/2-7	1/2"	7'	2.09
GR5/8-6	5/8"	6'	2.72
GR5/8-7	5/8"	7'	3.18
GR5/8-8	5/8"	8'	3.63
GR5/8-10	5/8"	10'	4.54
GR3/4-6	3/4"	6'	4.08
GR3/4-8	3/4"	8'	5.26
GR3/4-10	3/4"	10'	6.62
GR3/4-20	3/4"	20'	13.61
GR1-8	1"	8'	9.98
GR1-10	1"	10'	11.34

Material: carbon steel, HDG; copper clad.

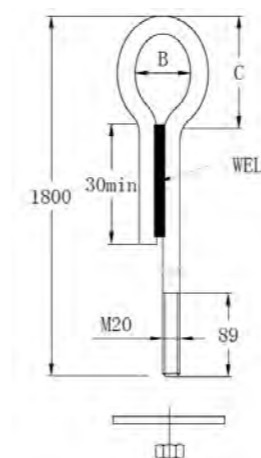
1.4.4 Ground Rod Guards



HE Code	Dia
GRG1/2	1/2"
GRG5/8	5/8"
GRG3/4	3/4"

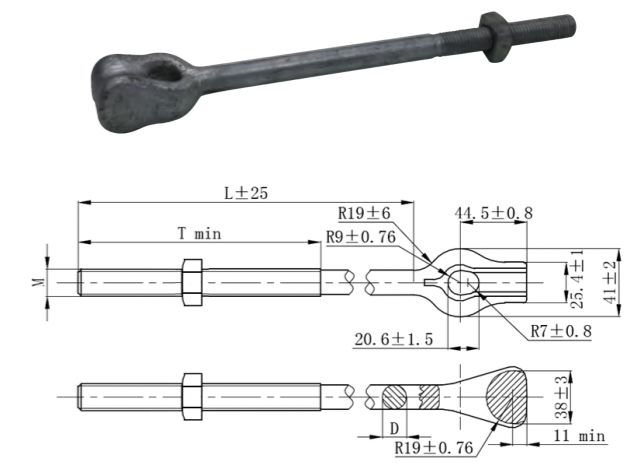
Material: Polypropylene (PP)

1.4.5 Thimbleye Anchor Rods



HE Code	Dimensions	
	B	C
ARL20-1800	38	71

Material: carbon steel hot dip galvanized to ASTM A153/ASTM A123.



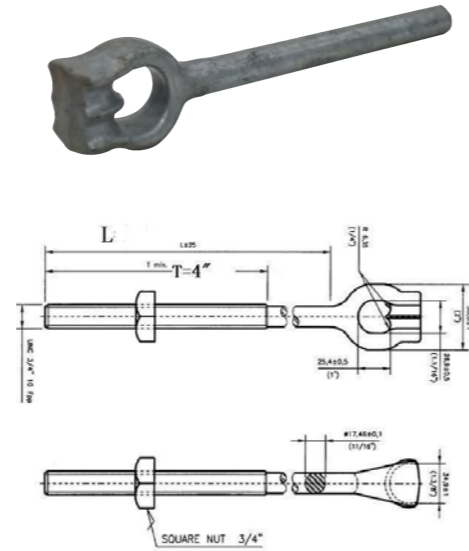
HE Code	Size	M	Dimensions		
			D	L	T
ART5/8-1500	5/8x1500	5/8"	14.2±0.3	1500	102
ART5/8-1800	5/8x1800	5/8"	14.2±0.3	1800	102
ART5/8-2400	5/8x2400	5/8"	14.2±0.3	2400	102

Material: carbon steel hot dip galvanized to ASTM A153/ASTM A123.
Producing standard: ANSI C-135.4

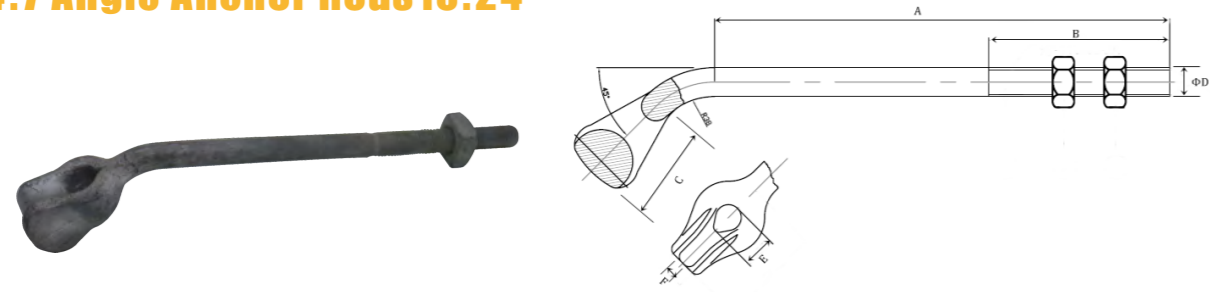
1.4.6 Twineye Anchor Rods

HE Code	Dimensions	
	L	T
ARD3/4-72	72"	4"
ARD3/4-84	84"	4"
ARD3/4-96	96"	4"
ARD3/4-108	108"	4"
ARD3/4-120	120"	4"

Material: carbon steel hot dip galvanized to ASTM A153/ASTM A123.
Producing standard: ANSI C-135.2



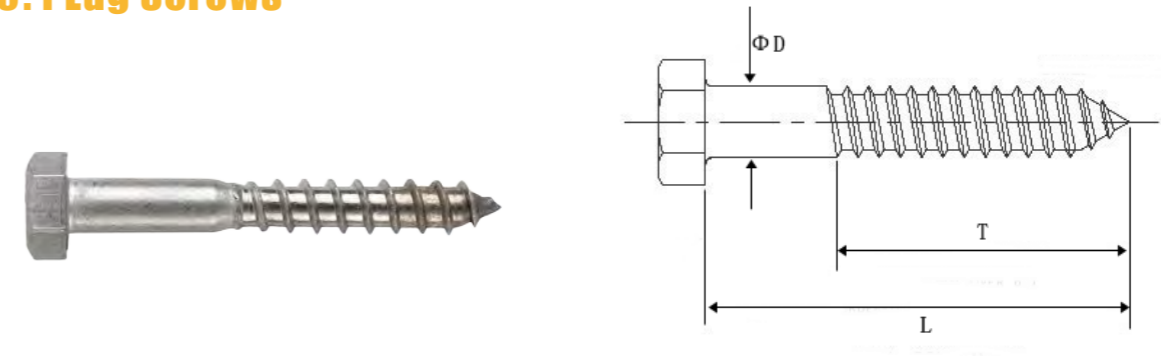
1.4.7 Angle Anchor Rods 10.24



HE Code	Dimensions						Wt. kg
	A	B	C	E	F	ΦD	
ARA5/8-6	6"	4"	3"	11/16"	9/16"	5/8"	0.59
ARA5/8-7	7"	4"	3"	11/16"	9/16"	5/8"	0.62
ARA5/8-8	8"	4"	3"	11/16"	9/16"	5/8"	0.66
ARA5/8-10	10"	4"	3"	11/16"	9/16"	5/8"	0.74
ARA5/8-12	12"	6"	3"	11/16"	9/16"	5/8"	0.81
ARA5/8-14	14"	6"	3"	11/16"	9/16"	5/8"	0.88
ARA5/8-16	16"	6"	3"	11/16"	9/16"	5/8"	0.95
ARA5/8-18	18"	6"	3"	11/16"	9/16"	5/8"	1
ARA3/4-10	10"	6"	3 9/16"	13/16"	11/16"	3/4"	0.85
ARA3/4-12	12"	6"	3 9/16"	13/16"	11/16"	3/4"	0.94
ARA3/4-14	14"	6"	3 9/16"	13/16"	11/16"	3/4"	1.03
ARA3/4-16	16"	6"	3 9/16"	13/16"	11/16"	3/4"	1.2
ARA3/4-18	18"	6"	3 9/16"	13/16"	11/16"	3/4"	1.31

Material: carbon steel hot dip galvanized to ASTM A153/ASTM A123.
Producing standard: ANSI C-135.4

1.5.1 Lag Screws



HE Code	ΦD	Dimensions		Wt./1000 kg
		L	Threaded Length	
LS1/4-1	1/4"	1"	1"	5.82
LS1/4-11/4	1/4"	1 1/4"		9.07
LS1/4-11/2	1/4"	1 1/2"		9.98
LS1/4-2	1/4"	2"	1 1/2"	12.25
LS1/4-21/2	1/4"	2 1/2"	1 3/4"	14.97
LS1/4-3	1/4"	3"		25.40
LS5/16-1 1/2	5/16"	1 1/2"	1 1/2"	19.6
LS5/16-2	5/16"	2"		18.14
LS5/16-3	5/16"	3"	1 7/8"	27.22
LS3/8-2	3/8"	2"		31.75
LS3/8-21/2	3/8"	2 1/2"	1 3/4"	39.92
LS3/8-3	3/8"	3"	2"	45.36
LS3/8-4	3/8"	4"		49.89
LS3/8-5	3/8"	5"		63.50
LS3/8-6	3/8"	6"		77.11
LS3/8-8	3/8"	8"		99.79
LS3/8-10	3/8"	10"		122.47
LS1/2-2	1/2"	2"		49.89
LS1/2-3	1/2"	3"		68.04
LS1/2-31/2	1/2"	3 1/2"		86.18
LS1/2-4	1/2"	4"	2 1/2"	90.72
LS1/2-5	1/2"	5"		113.40
LS1/2-6	1/2"	6"		131.54
LS1/2-7	1/2"	7"		181.44
LS5/8-5	5/8"	5"		204.12
LS3/4-4	3/4"	4"		231.33

Material: carbon steel hot dip galvanized to ASTM A153/ASTM A123.
Producing standard: ANSI/ASME B18.2.1

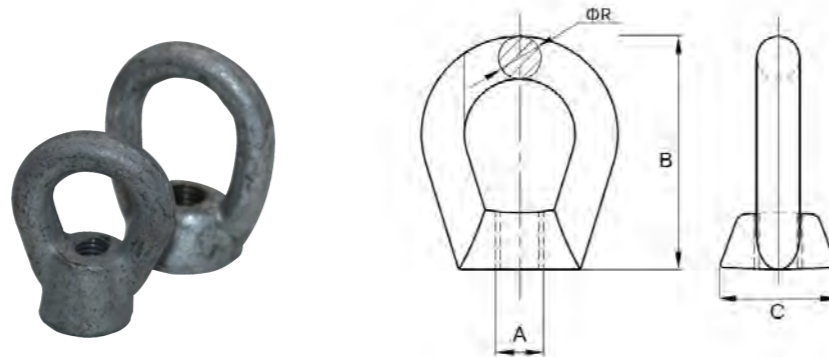
1.5.2 Eye Screws



HE Code	Dia. in	Dimensions		Wt. kgs
		Eye size.	Length under eyes	
ES3/8	3/8"	7/8" x 1/4"	3"	0.100
ES1/2	1/2"	1 1/4 x 1 5/8"	6"	0.295
ES5/8	5/8"	1 1/2" x 2"	6 3/4"	0.472
ES3/4	3/4"	1 1/2" x 2"	6 3/4"	0.617

Material: carbon steel hot dip galvanized to ASTM A153/ASTM A123.
Producing standard: ANSI/ASME B18.2.1

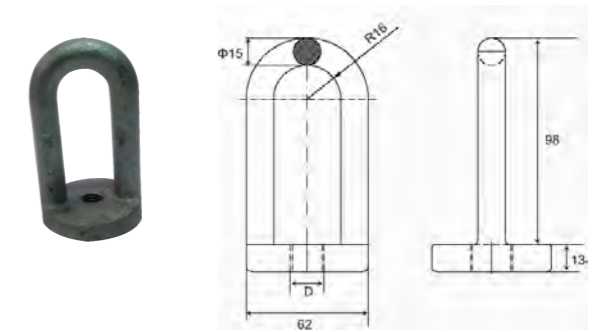
1.1.1 Oval Eye Nuts



HE Code	Dimensions				Wt. kg	Ultimate tensile strength lbs
	A	B	C	ΦR		
EN1/2	1/2"	2 5/8"	1 1/4"	1/2"	0.227	7800
EN5/8	5/8"	3"	1 3/8"	9/16"	0.272	13550
EN3/4	3/4"	3"	1 3/8"	9/16"	0.272	20050
EN7/8	7/8"	4 5/16"	1 7/8"	11/16"	0.525	25400

Material: carbon steel hot dip galvanized to ASTM A153/ASTM A123.
Producing standard: ANSI C-135.5

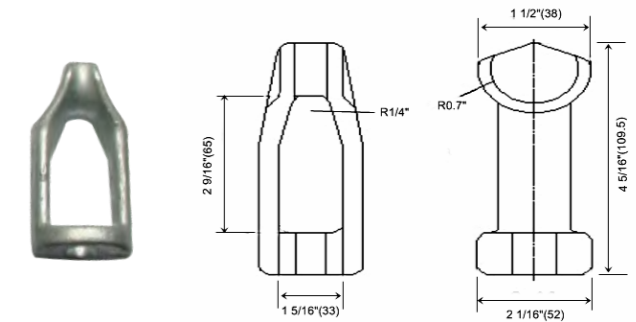
1.2.1 Standard Eyelets



HE Code	Dimensions		Wt. kgs
	D	Slot	
ELL16	16(5/8")	11/16"X 1 1/8"	0.431
ELL19	19(3/4")	13/16"X 1 1/8"	0.422

Material: casted or forged carbon steel hot dip galvanized to ASTM A153/ASTM A123.

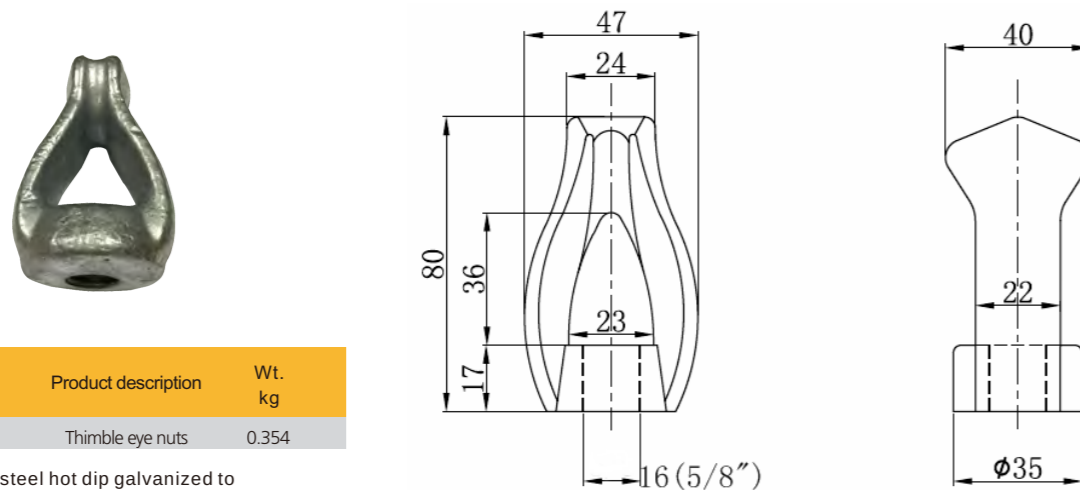
1.2.2 Straight Thimble Eyelets



HE Code	Dimensions		Wt. kg
	Bolt dia.	Slot	
ELT5/8	5/8"(16)	11/16"X 13/16"	0.558
ELT3/4	3/4"(19)	13/16"X 1 1/16"	0.590

Material: carbon steel hot dip galvanized to ASTM A153/ASTM A123.
Producing standard: ANSI C-135.5

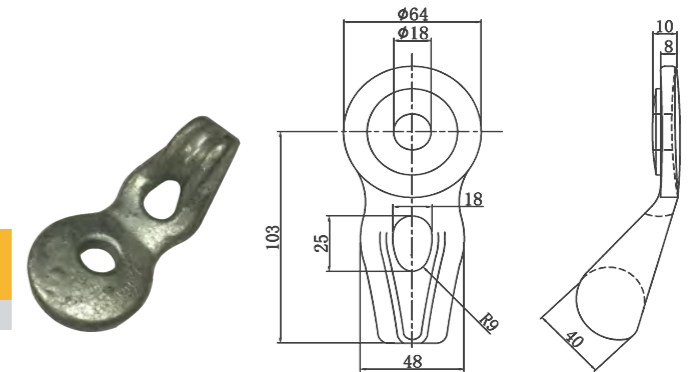
1.1.2 Thimble Eye nuts



HE Code	Product description	Wt. kg
ENT5/8	Thimble eye nuts	0.354

Material: carbon steel hot dip galvanized to ASTM A153/ASTM A123.
Producing standard: ANSI C-135.5

1.2.3 Angle Thimble Eyelets



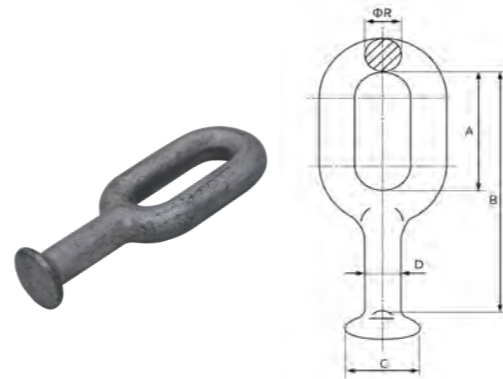
HE Code	Product description	Wt. kgs
ELA18	Angle thimble eyes	0.431

Material: ductile iron hot dip galvanized to ASTM A153.

1.1.1 Oval Ball Eyes

HE Code	Dimensions					Designated size of coupling	Rated failure load (KN)	Wt. kg
	A	B	C	D	ΦR			
QH-7	57	100	33.3	17	16	16	70	0.6
QH-10	57	100	33.3	17	18	16	100	0.6
QH-12	65	114	33.3	17	19	16	120	1.1
QH-16	80	127	41	21	18	20	160	1.3
QH-20	85	135	41	21	22	20	160	1.5
QH-21	80	150	41	21	20	20	210	1.3
QH-30	98	150	49	25	22	24	300	1.7

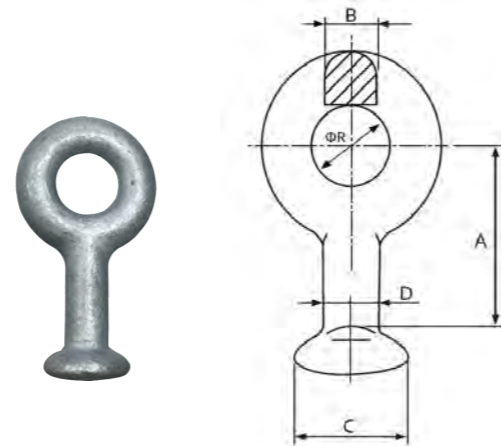
Material: carbon steel hot dip galvanized to ASTM A153/ASTM A123.



1.1.2 Round Ball Eyes

HE Code	Dimensions					Designated size of coupling	Rated failure load (KN)	Wt. kg
	A	B	C	D	ΦR			
QP-7	50	16	33.3	17	20	16	70	0.3
QP-10	50	16	33.3	17	20	16	100	0.3
QP-12	60	20	41	21	24	20	120	0.5
QP-12G	60	17	33.3	17	24	16	120	0.4
QP-16	60	20	41	21	26	20	160	0.5
QP-16G	60	18	41	21	26	20	160	0.5
QP-20	80	24	49	25	30	24	200	1
QP-21D	70	24	41	21	30	20	210	0.9
QP-30	80	28	49	25	39	24	300	1.1
QP-2120G	80	20	41	21	26	20	210	0.7
QP-3224G	80	28	49	25	33	24	320	1.2
QP-4228G	100	32	57	29	39	28	420	1.5

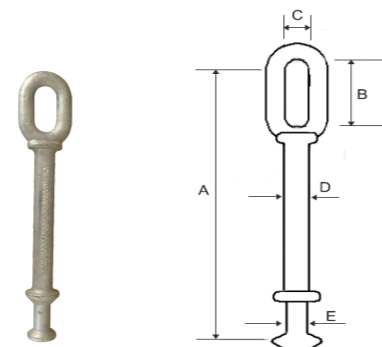
Material: carbon steel hot dip galvanized to ASTM A153/ASTM A123.



1.1.3 Ball Eyes Extension Link

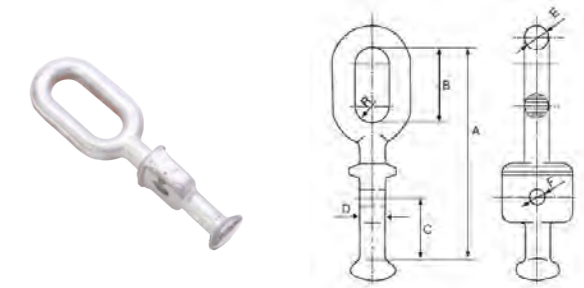
HE Code	Dimensions					Minimum failing load (KN)	Wt. kg
	A	B	C	D	E		
BEL250	250	64	32	24	20	160	1.3
BEL500	500	64	32	24	20	160	2.3
BEL800	800	64	32	24	20	160	3.4

Material: carbon steel hot dip galvanized to ASTM A153/ASTM A123.



1.1.4 Ball Eyes QN Type

Material: carbon steel hot dip galvanized to ASTM A153/ASTM A123.

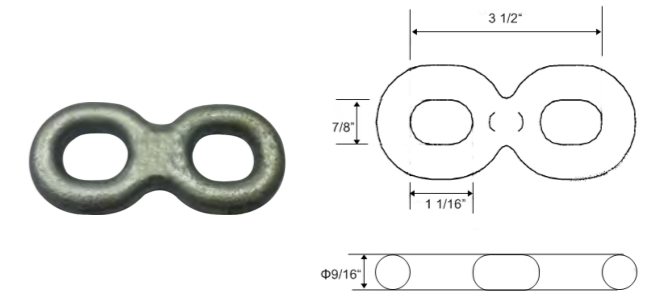


HE Code	Dimensions(mm)						Designated size of coupling	Rated failure Load	Wt. kg
	A	B	C	D	E	F			
QN-7	165	56	48	17	16	14	12.5	70	1.2
QN-10	165	56	48	17	16	14	12.5	100	1.3
QN-12	165	56	48	17	16	14	12.5	120	1.5
QN-16	175	80	48	20	20	14	15	160	1.8

1.1.5 Double Eyes

HE Code	Product description
DEL-1	Double Eyes Link

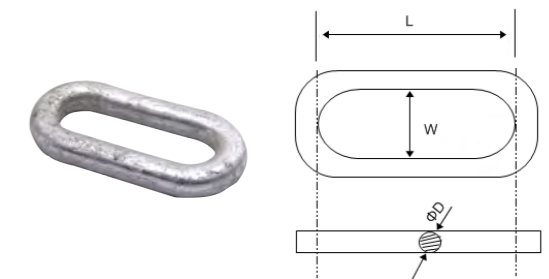
Material: carbon steel hot dip galvanized to ASTM A153/ASTM A123.



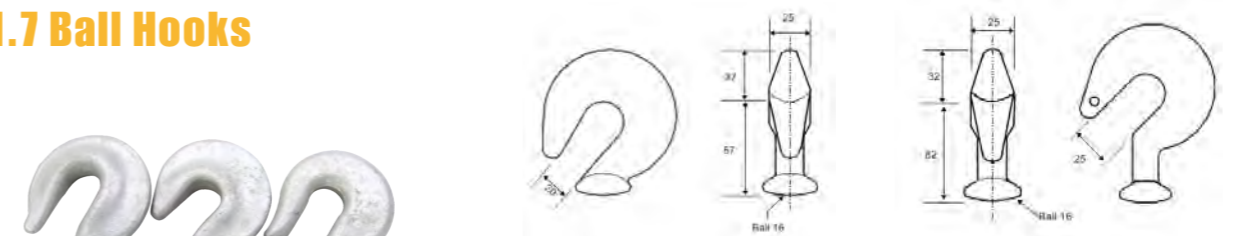
1.1.6 Link Eyes

HE Code	Dimensions			Wt. kg	Ultimate strength lbs
	L	W	ΦD		
LE1/2	2 1/4"	1"	1/2"	0.186	20000
LE5/8	3"	1"	5/8"	0.331	30000

Material: carbon steel hot dip galvanized to ASTM A153/ASTM A123.



1.1.7 Ball Hooks



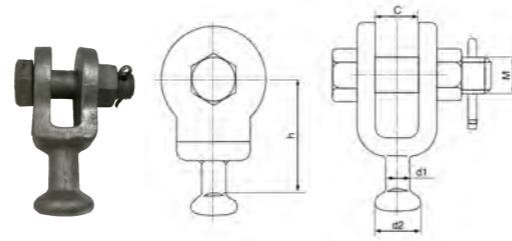
HE Code	Description	HE Code	Description
BHS-1	short shank ball hook	BHL-1	long shank ball hook

Material: carbon steel hot dip galvanized to ASTM A153/ASTM A123.

1.2.1 Ball Clevis Q-U Type

HE Code	Dimensions					Designated size of coupling	Rated failure load (KN)	Wt. kg
	h	d1	d2	M	C			
Q-7U	89	17	33.3	16	18	16	70	0.9
Q-12U	94	17	33.3	22	22	16	120	1
Q-16U	78	21	41	24	24	20	160	1
Q-16UA	80	21	41	24	26	20	160	1.12
Q-21U	102	21	41	27	30	20	210	1.35
Q-30U	110	25	49	36	38	24	300	2.14

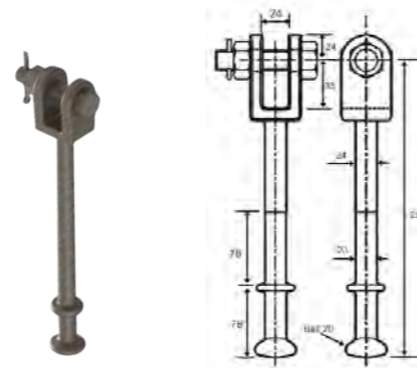
Material : carbon steel for body hot dip galvanized to ASTM A153/ASTM A123; stainless steel for split pin.



1.2.3 Ball Clevis Extension links

HE Code	Description
BCL-1	ball clevis extension link

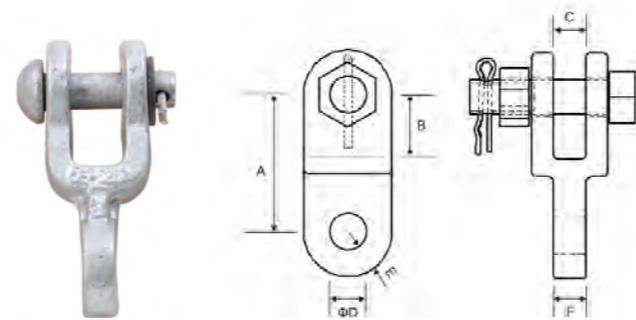
Material : carbon steel hot dip galvanized to ASTM A153/ASTM A123.



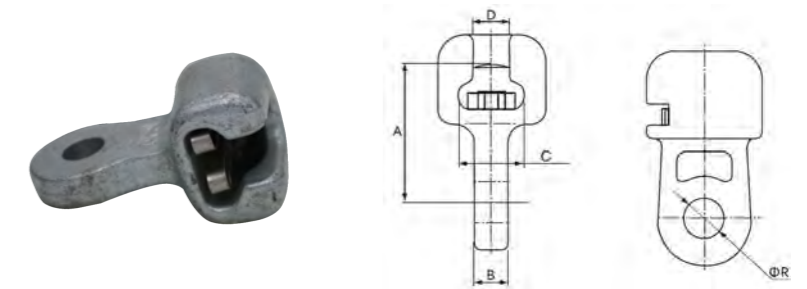
1.2.4 Clevis Eyes

HE Code	Description	Dimensions						Wt. kg	Minimum failing load (KN)
		A	B	C	ΦD	E	F		
CE-1	Clevis eye	72	28	20	18	22	16	0.7	70
CE-2	Clevis eye	72	28	20	18	22	16	0.7	120
CE-3	Clevis eye	86	35	24	22	24	20	1.1	160

Material : carbon steel for body hot dip galvanized to ASTM A153/ASTM A123; stainless steel for split pin.



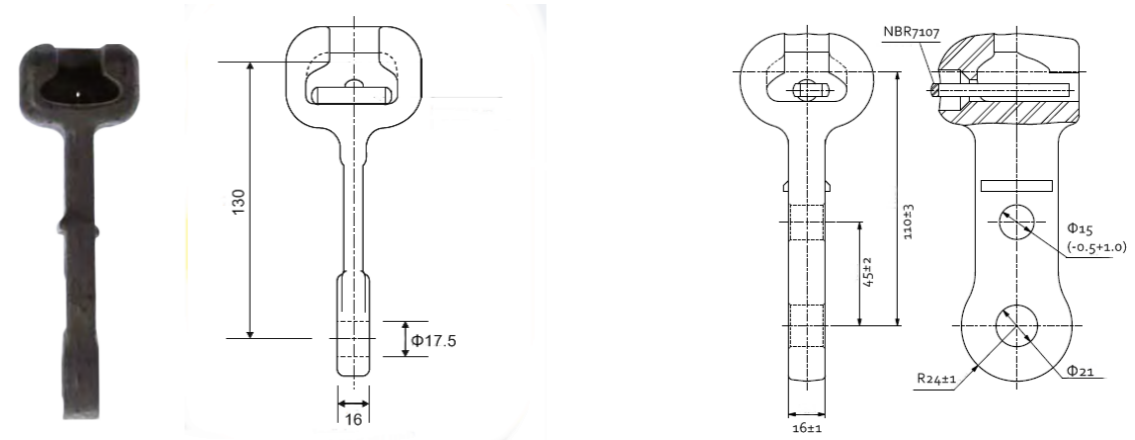
1.3.1 Socket Eyes



HE Code	A	B	C	D	ΦR	Designated size of coupling	Wt. kg	Rated failure load kN
W-7A	70	16	34.5	19.2	20	16	0.69	70
W-7B	115	16	34.5	19.2	20	16	0.86	70
W1-10	85	18	34.5	19.2	20	16	0.9	100
W1-12	90	20	34.5	19.2	24	16	1.3	120
W-12	90	20	42.5	23	24	20	1.4	120
W-30	110	32	51	27.5	39	24	3.5	300

Material: malleable iron or casting steel hot dip galvanized.

1.3.2 Socket Eyes Extension Links



HE Code	Description
SEL-1	Socket eyes extension link

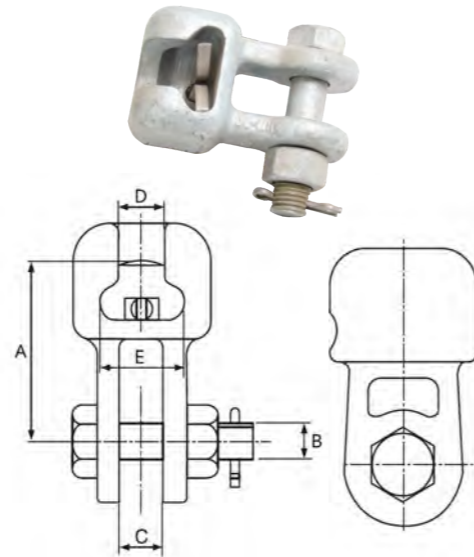
HE Code	Description
SES-1	Straight socket eyes

Material: malleable iron or casting steel hot dip galvanized.

1.3.3 Socket Clevis

HE Code	Dimensions					Designated size of coupling	Wt. kg	Rated failure load (KN)
	C	D	C2	B	A			
WS-7	18	19.2	34.5	16	70	16	0.97	70
WS-10	20	19.2	34.5	18	85	16	1.7	100
WS-12G	20	19.2	34.5	18	85	16	1.7	120
WS-12	24	23	42.5	22	90	20	3.81	120
WS-12X	24	19.2	34.5	22	90	16	3.1	120
WS-12A	20	19.2	34.5	22	85	16	1.8	120
WS-16	26	23	42.5	24	95	20	2.64	160
WS-20	30	27.5	51	27	100	24	4.3	200
WS-20DF	30	23	42.5	27	100	20	4.5	200
WS-30	36	27.5	51	36	110	24	5.7	300
WS-16G	22	23	42.5	24	95	20	2.64	160
WS-21G	24	27.5	51	24	100	24	3.5	210
WS-32G	32	27.5	51	30	110	24	4.8	320
WS-42G	36	32	59	36	120	28	5.6	420

Material : malleable iron or casting steel hot dip galvanized.

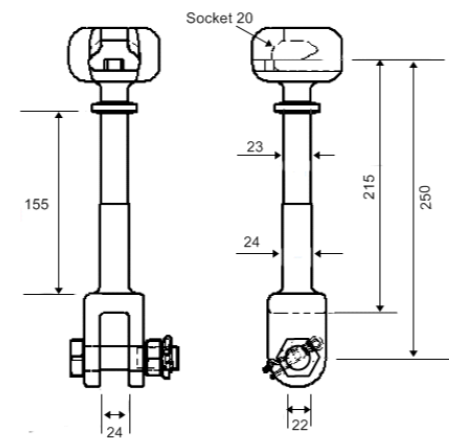


1.3.4 Socket Clevis Extension Links



HE Code	Description
SCL-1	Socket clevis extension links

Material: malleable iron or casting steel hot dip galvanized.

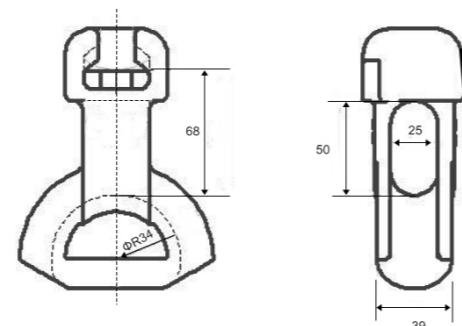


1.3.5 Socket Thimble



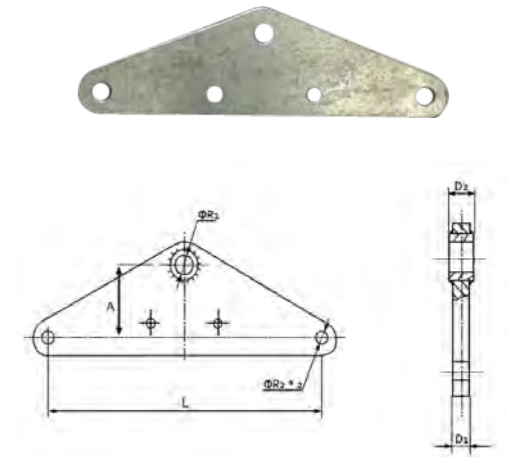
HE Code	Description	Socket MM	Wt. kg	Min failing load
ST-1	Socket thimble	16	0.9	70

Material: ductile iron hot dip galvanized.



1.4.1 Yoke Plates

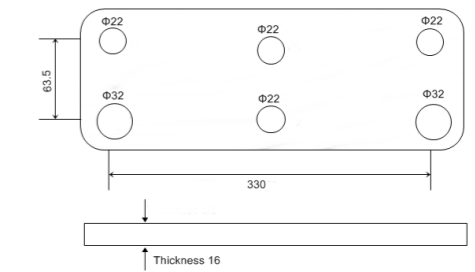
HE Code	Dimensions						Wt. kg	Rated failure load (KN)
	D1	D2	A	L	ΦR1	ΦR2		
YPL-1	16	16	70	400	20	18	4.43	100
YPL-2	16	16	70	400	24	18	4.66	120
YPL-3	18	18	100	400	26	20	5.8	160
YPL-4	18	18	100	400	30	20	6.9	200
YPL-5	16	26	100	520	30	26	8	200
YPL-6	16	26	200	550	30	24	11.8	200
YPL-7	16	30	110	400	33	24	9	250
YPL-8	18	32	110	400	39	26	10	300
YPL-9	24	38	110	550	45	30	24.4	420
YPL-10	30	38	110	400	45	33	14.8	500
YPL-11	32	42	200	150	51	39	25.5	600
YPL-12	32	42	250	500	51	39	23.3	600



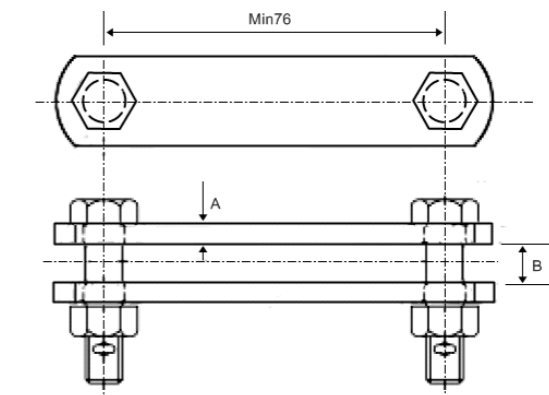
HE Code	Dimensions	Wt. kg	Rated ultimate strength lbs
YPT-1	Rectangular plate	20	3000

Material: carbon steel hot dip galvanized.

Below is available upon request:



1.4.2 Double Plates



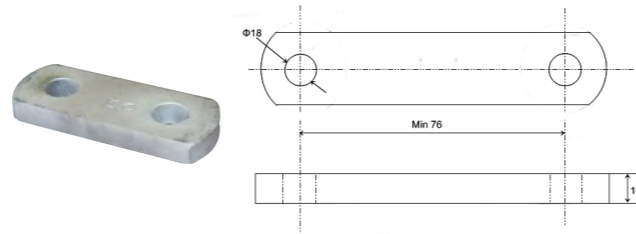
HE Code	Description	Dimensions		Bolt dia.	Min failing load kN
		A	B		
DP-1	Double plates	8	20	16	70
DP-2	Double plates	8	20	16	120
DP-3	Double plates	10	24	20	160

Material: carbon steel hot dip galvanized.

1.4.3 Single Plates

HE Code	Description	Min failing load KN
SP-76	Single plate	120

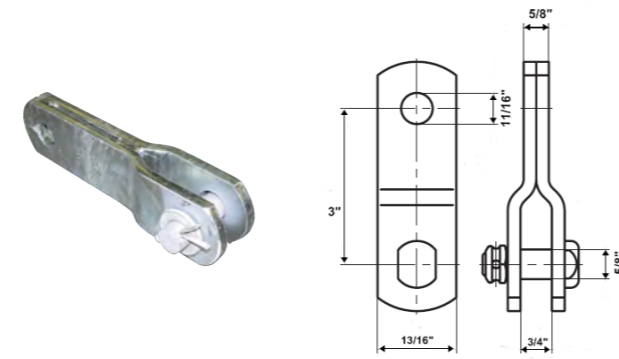
Material : carbon steel hot dip galvanized.



1.4.4 Clevis Straps

HE Code	Description	Wt. kg
CSL-5/8	Clevis strap	0.454

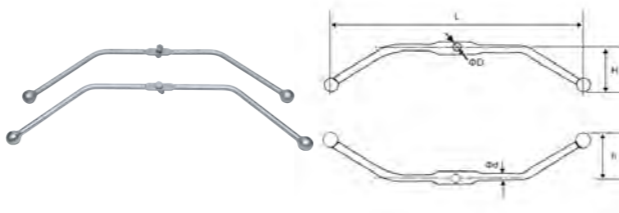
Material: malleable cast iron hot dip galvanized.



1.4.5 Arcing Horn

HE Code	ΦD	Dimensions				Wt. kg	Voltage Kv
		Φd	L	H	h		
AH-1	14.5	16	712	197	114	1.2	138
AH-2	4.5	16	762	197	114	1.26	161-230

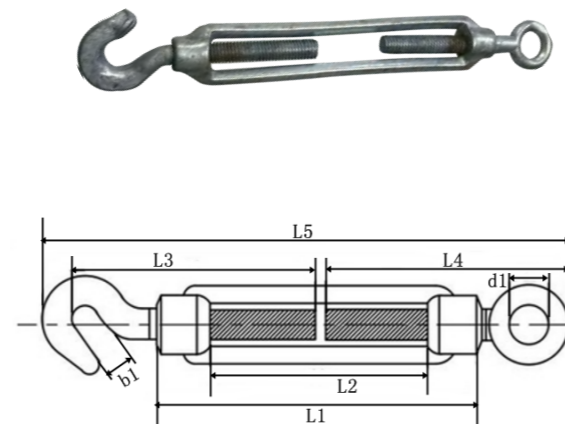
Material: hot dip galvanized steel.



1.5 Turnbuckles

HE Code	Dimensions							Wt. kg
	L1	L2	L3	L4	L5	b1	d1	
TB-M6	110	80	85	80	172	8.5	9	0.095
TB-M8	110	75	85	84	182	11	10	0.165
TB-M10	125	85	112	105	213	13.5	14	0.290
TB-M12	125	80	117	115	238	15.5	16	0.430
TB-M14	140	90	122	122	263	18.5	18	0.621
TB-M16	170	110	138	165	320	19	22	0.921
TB-M20	200	130	170	167	367	20.5	24	1.628
TB-M22	220	145	185	167	398	26	27	2.202
TB-M24	255	170	205	205	447	26	27	3.003
TB-M30	255	160	225	255	512	33	31	4.604
TB-M36	295	180	255	276	568	44	43	7.684
TB-M42	330	200	340	260	683	48	49	12.911
TB-M48	355	195	360	300	755	58	58	21.018

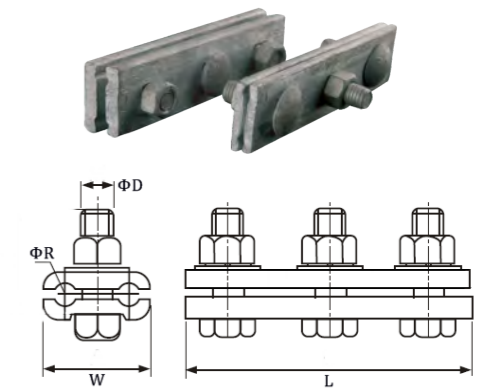
Material: hot dip galvanized steel.



1.1.1 Guy Clamps

HE Code	Cross section (mm²)	Bolt qty	Dimensions(mm)			
			ΦD	L	W	ΦR
PG-1	16-25	2	10	70	38.5	3.5
PG-2	35-50	2	12	80	42	5
PG-3	70-95	3	12	111	52	7
PG-4	120-150	3	16	140	61.5	9
PG-5	185-240	3	16	145	68.5	11
PG-6	300-400	4	16	200	90	14
PG-7	500	4	20	215	100	15.5

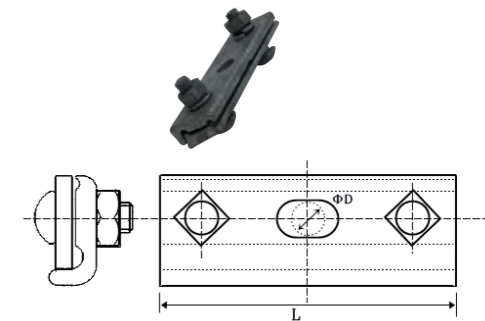
Material: aluminum alloy clamp body; galvanized steel for carriage bolts or machine bolts.



1.1.2 Straight Cable Suspension Clamps

HE Code	Bolt qty	Bolt size	Dimensions(mm)			Wt. kg
			L	ΦD	Strand size	
CSCS-1	1	5/8"	2 1/2"	11/16"	1/4"-7/16"	0.304
CSCS-2	3	5/8"	5 5/8"	11/16"	1/4"-7/16"	0.807
CSCS-3	3	5/8"	5 3/4"	11/16"	1/4"-7/16"	0.889
CSCS-4	3	3/4"	5 5/8"	13/16"	5/16"-3/8"	0.962

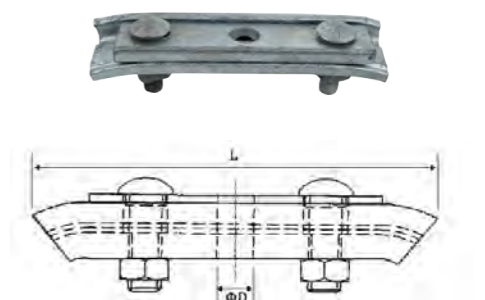
Material: malleable iron, hot dip galvanized.



1.1.3 Angle Cable Suspension Clamps

HE Code	Bolt qty	Bolt size	Dimensions(mm)			Wt. kg
			L	ΦD	Strand size	
CSCA-1	3	5/8"	7"	11/16"	1/4"-7/16"	1.052
CSCA-2	3	5/8"	7"	13/16"	1/4"-7/16"	1.052
CSCA-3	3	3/4"	7"	13/16"	1/4"-7/16"	1.746

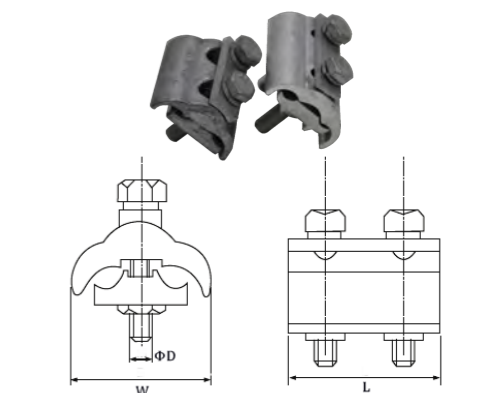
Material: malleable iron, hot dip galvanized



1.1.4 Aluminium Parallel Groove Clamps

HE Code	Bolt qty	Bolt size	Cross section mm²	Dimensions		
				L	W	ΦD
PGCA-1	1	M8	16 - 70	40	36	8
PGCA-2	2	M8	16 - 70	26	36	8
PGCA-3	2	M8	16 - 95	55	41	8
PGCA-4	2	M8	16 - 150	50	45	8
PGCA-5	2	M10	35 - 200	63	58	10
PGCA-6	2	M10	35 - 300	69	65	10
PGCA-7	3	M10	35 - 300	104	65	10

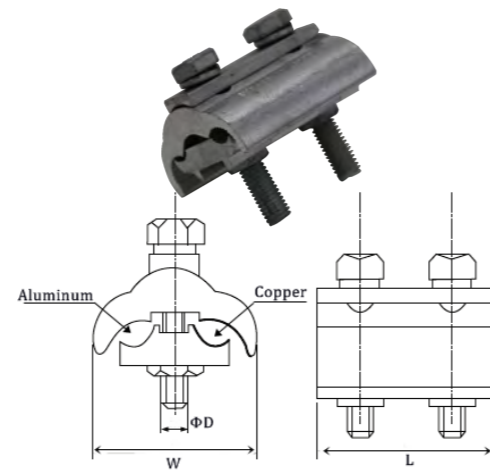
Material: aluminum for clamp body; galvanized steel for bolts, nuts.



1.1.5 Bimetallic Parallel Groove Clamps

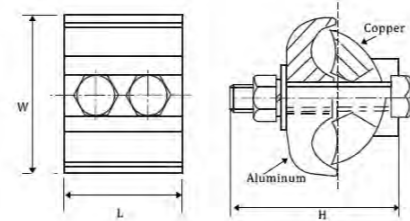
HE Code	Bolt qty	Bolt size	Al cross section (mm ²)	Cu cross section (mm ²)	Dimensions		
					L	W	ΦD
PGCAC-1	1	M8	16 - 70	6 - 50	26	28	8
PGCAC-2	2	M8	25 - 150	10 - 95	50	32	8
PGCAC-3	2	M8	35 - 120	6 - 35	42	40	8
PGCAC-4	2	M10	35 - 200	16 - 185	63	57	10
PGCAC-5	3	M10	35 - 185	35 - 185	95	80	10
PGCAC-6	3	M10	35 - 300	35 - 240	104	65	10

Material: aluminum-copper for clamp body; galvanized steel for bolts, nuts.



HE Code	Bolt qty	Cross section (mm ²)	Dimensions			Wt. kg
			L	H	W	
PGCB-1	2	10 - 95	40	40	41	0.235
PGCB-2	2	16 - 120	47	55	48	0.273
PGCB-3	2	50 - 240	45	60	62	0.381

Material: aluminum-copper for clamp body; galvanized steel for bolts, nuts.



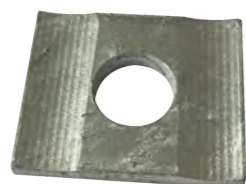
1.1.6 Copper Parallel Groove Clamps

HE Code	Bolt qty	Cross section (mm ²)	Length mm	Wt. kg
PGCC-1	1	6 - 70	25	0.1
PGCC-2	2	10 - 95	42	0.3
PGCC-3	2	16 - 150	50	0.5

Material: copper hot forged for clamp body; copper alloy for bolts, nuts.

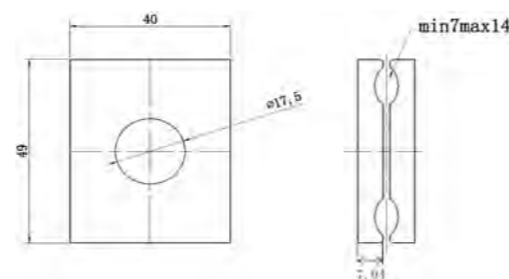


1.1.7 Grounding Clamps



HE Code	Description	Ground wire range	Mounting bolt
GDC-1	Grounding clamp	3/16"-7/16"	5/8"

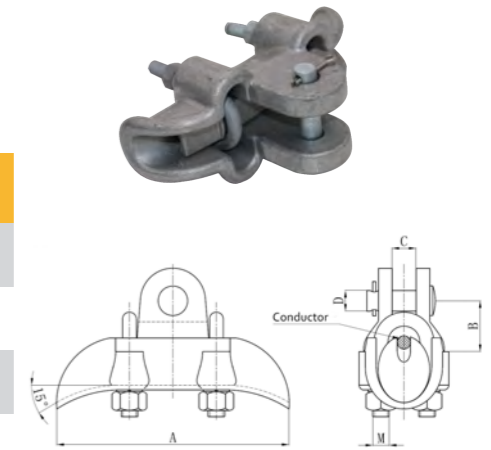
Material: steel hot dip galvanized to ASTM A153/ ASTM A123.



1.2.1 CGH Clevis Suspension Clamps

HE Code	Conductor	M	Dimensions(MM)			
			A	B	C	D
CGH-1	1/0-2/0 (53.5-67.4mm ²)	2XM12(1/2")	140(5 33/64")	55(2 11/64")	17.5(11/16")	15.9(5/8")
CGH-2	4/0AWG-266MCM (107.2-134.8mm ²)	2XM12(1/2")	140(5 33/64")	55(2 11/64")	17.5(11/16")	15.9(5/8")
CGH-3	266-566.5MCM (134.8-282mm ²)	2XM12(1/2")	140(5 33/64")	55(2 11/64")	25.5(1")	15.9(5/8")
CGH-4	3/8"	2XM10(3/8")	140(5 33/64")	55(2 11/64")	25.5(1")	15.9(5/8")

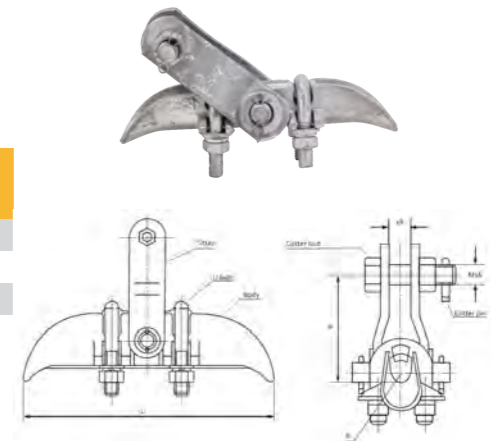
Material: aluminum for clamp body; galvanized steel for hardware.



1.2.2 CGU Trunnion Suspension Clamps

HE Code	Conductor range mm	Dimensions(mm)			Strength load Kn	Wt. kg
		R	L	H		
CGU-1	5.0-7.0	4	180	82	40	1.4
CGU-2	7.1-13	7	200	82	40	1.8
CGU-3	13.1-21	11	220	102	40	2
CGU-4	21.1-26	13.5	250	110	40	3

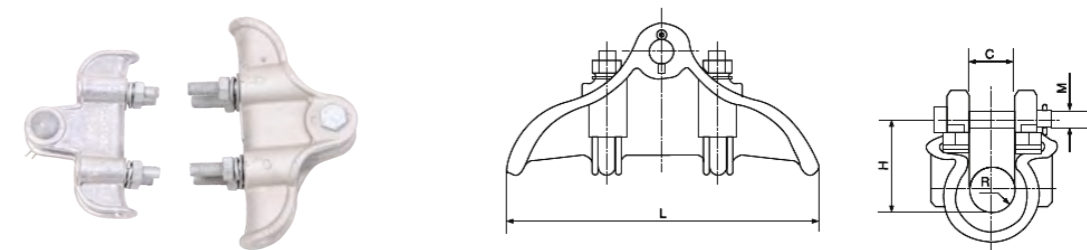
Material: steel for body, bolts and straps; stainless steel A2 for cotter pins. All iron parts are hot dip galvanized to ASTM A153/ ASTM A123.



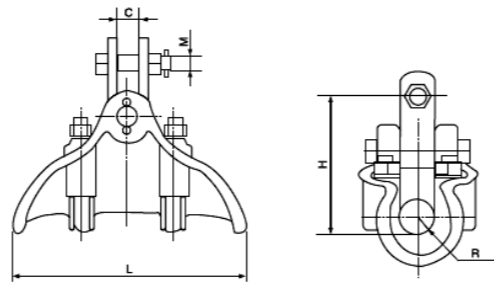
1.2.3 CGF Suspension Clamps

HE Code	Conductor range mm	Dimensions					Strength load kN	Wt. kg
		L	H	C	M	R		
CGF-1	190-220	300	65	28	16	14	70	3.2
CGF-2	230-320	300	82	34	16	17	90	3.55

Material: aluminum



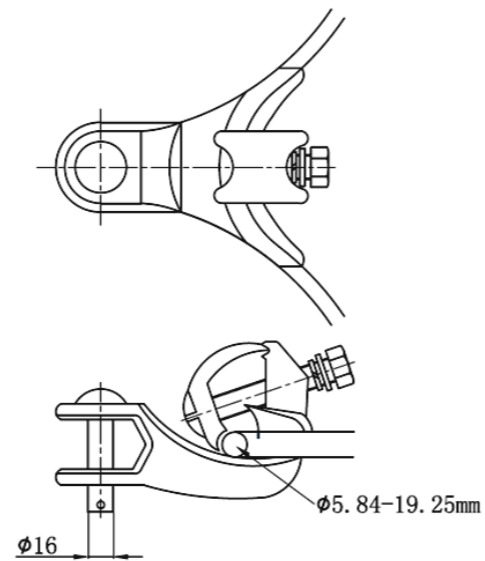
1.2.4 CGF Suspension Clamps Hung-down Type



HE Code	Conductor range mm	L	H	C	M	R	Strength load Kn	Wt. kg
CGFH-1	23-32	300	147	20	16	17	70	3.55
CGFH-2	33-43	300	168	20	18	23	90	4
CGFH-3	40-52	300	182	20	18	27	100	4.5

Material: aluminum alloy for clamps body; hot dip galvanized steel for hardware.

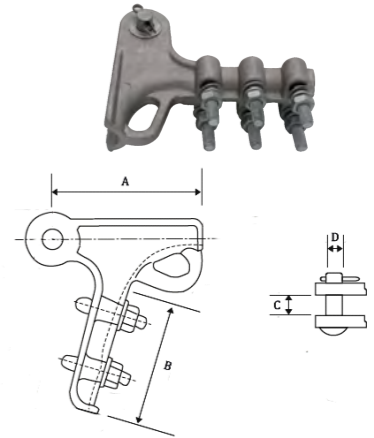
1.2.5 Angle Suspension Clamps



HE Code	Description	Ground wire range	Mounting bolt
ASC-1	Angle suspension clamp	5.84-19.25	16

Material: clamp body is made of steel, hot dip galvanized.

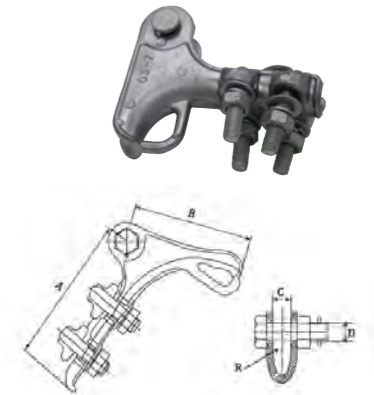
1.3.1 Aluminum Alloy Strain Clamps



HE Code	Bolt qty	Conductor range mm	Dimensions(mm)			
			A	B	C	D
SCAA-1	2	8-11	175	120	17.5	16
SCAA-2	3	12-19.5	200	187	21	16
SCAA-3	5	13-30	330	210	30	16
SCAA-4	5	17.5-31	350	489	38	16
SCAA-5	5	28.5-47	350	489	47	16

Material: aluminum alloy for clamp body; galvanized steel for hardware.

1.3.2 Bolted Strain Clamps



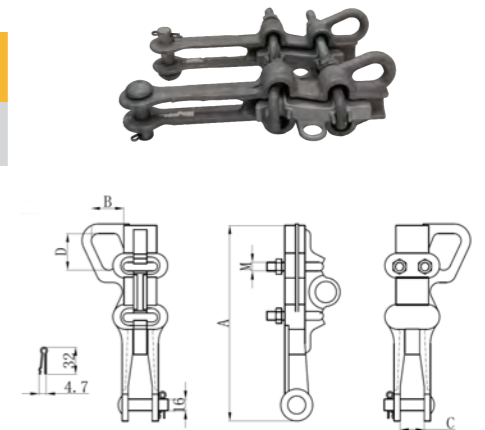
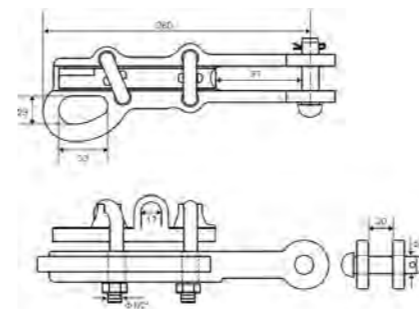
HE Code	Conductor range mm	Dimensions(mm)				U-bolt No.	Failure load kN	Wt. kg		
		A	B	C	D	Di.				
SCS-1	5.0-10.0	150	120	18	16	6.5	2	12	20	1.3
SCS-2	10.1-14	205	130	18	16	8	3	12	40	2.1
SCS-3	14.1-18	310	160	20	18	11	4	16	70	4.6
SCS-4	18.1-23	410	220	25	18	12.5	5	16	90	7.1

Material: malleable cast iron for clamp body. All iron parts are hot dip galvanized to ASTM A153/ASTM A123.

1.3.3 Deadend Strain Clamps

HE Code	Conductor	M	A	Dimensions(MM)		
				B	C	D
SCDE-1	1/0-2/0AWG (53.6-67.4mm ²)	2xM10	200	22	17.5	30
SCDE-2	4/0-266.8MCM (107.2-134.8mm ²)	2xM12	230	25	20	30

Material: aluminum for clamp body; galvanized steel for U bolt and cotter pins; stainless steel for split pins.



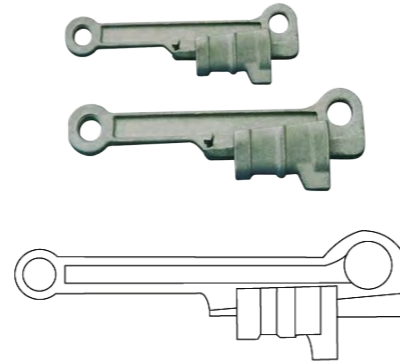
HE Code	Description
SCD-1	Deadend strain clamp

Material: aluminum for clamp body; galvanized steel for U bolt and cotter pins; stainless steel for split pins.

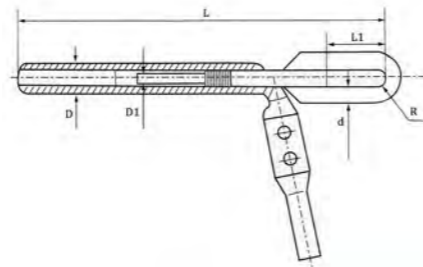
1.3.4 Aluminum Alloy Strain Clamps

HE Code	Conductor range mm	Slip strength kN	U.T.S kN	Wt. kg
ALSC-1	50-70	7.11	10.95	0.4
ALSC-2	120	12.02	19.45	0.59

Material: aluminum alloy



1.3.5 Hydraulic Strain Clamps



HE Code	Conductor mm ²	D	D1	Dimension(mm)				Slip strength Kn	Wt. kg
				d	L	L1	R		
SCHNY-1	15-95	30	14	14	405	55	9	34	1.75
SCHNY-2	20-95	30	14	14	410	55	9	35	1.8
SCHNY-3	7-120	30	12	12	375	55	9	26	1.6
SCHNY-4	20-120	30	14	16	120	55	9	39	1.8
SCHNY-5	25-120	30	14	16	435	55	9	46	1.85
SCHNY-6	20-150	32	14	16	435	55	10	44	2
SCHNY-7	25-150	32	14	16	440	55	10	51	2.1
SCHNY-8	35-150	32	16	18	465	55	10	62	2.25
SCHNY-9	25-185	32	14	16	450	55	10	56	2.3
SCHNY-10	30-185	32	16	18	475	55	10	61	2.4
SCHNY-11	30-240	36	16	18	490	55	10	70	2.6
SCHNY-12	40-240	36	16	18	500	55	10	80	2.7
SCHNY-13	15-300	40	14	16	470	55	10	65	2.9
SCHNY-14	20-300	40	16	18	495	55	11	70	3
SCHNY-15	25-300	40	16	18	510	55	11	80	3.1
SCHNY-16	40-300	40	16	18	540	55	11	90	3.25
SCHNY-17	50-300	40	18	18	560	65	12	100	3.4
SCHNY-18	70-300	42	22	22	600	70	13	120	3.7
SCHNY-19	20-400	45	14	18	540	50	11	85	3.6
SCHNY-20	25-400	45	14	18	555	55	11	90	3.7

Material: aluminum for clamp body; galvanized steel for bolts.

1.3.6 Aerial Insulation Wedge Tension Clamps

HE Code	Description	Cross section mm ²
AWC-1	Aerial insulation wedge tension clamps	50-70

Material: high strength aluminum alloy, nylon plus fiber glass, stainless steel.

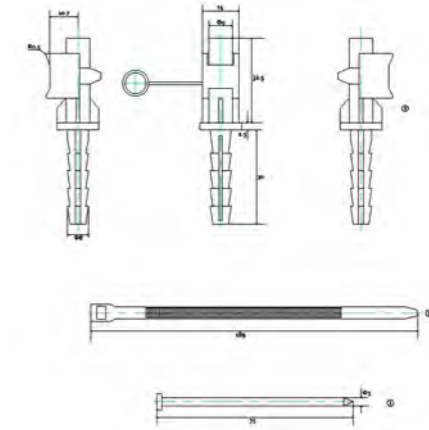


1.3.7 Fixing Nails



HE Code	Description
FN-1	Fixing Nails

Notes:
1.①Long steel screw nail: material A3
2.②Plastic belt; Nylon 6
3.③Nylon 6



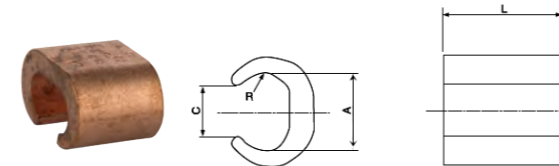
1.4.1 Ground Rod Clamps

HE Code	Rod dia.	Conductor section mm ²	Wt. kg
GRC-1	5/8"	16-70	0.15
GRC-2	3/4"	16-70	0.136

Material: bronze/copper.



1.4.2 C-Shape Clamps



HE Code	Dimensions				Wt./1000 kg
	A	L	C	R	
CSC-1	7	9.5	4	1.9	5
CSC-2	7.8	11.8	5	2.3	5
CSC-3	8.6	12.8	5.5	2.6	6
CSC-4	10	15	6.5	2.6	8
CSC-5	13.5	19	8.5	4.1	22
CSC-6	15.5	22	10	4.7	26
CSC-7	17.2	22	12	6.1	37
CSC-8	21	25	13	6.2	57
CSC-9	22.5	26	14	7	67
CSC-10	25.7	28	17	8.7	74
CSC-11	28.5	35	17.5	8.9	11
CSC-12	30	40	19	9.9	151
CSC-13	34.5	45	22.5	11.3	194
CSC-14	37.5	50	25	13.1	231
CSC-15	42.5	60	28	14.3	464
CSC-16	46	65	31	16	577
CSC-17	51.5	70	34	18	746

Material: copper.

1.4.3 Insulation Piercing Clamps



HE Code	Voltage Kv	Bolt qty	Main wire mm ²	Branch wire mm ²	Wt. kg
IPC-1	1	1	10-70	1.5-10	0.48
IPC-2	1	1	16-95	4-35	0.15
IPC-3	1	1	50-150	6-35	0.15
IPC-4	1	1	16-120	16-120	0.2
IPC-5	1	2	35-120	35-120	0.37
IPC-6	1	2	50-240	50-240	0.8
IPC-7	10	2	15-185	15-185	0.8
IPC-8	10	2	50-150	50-150	0.5
IPC-9	10	2	16-70	16-70	0.8

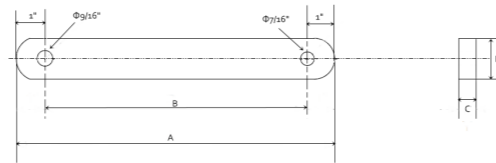
HE Code	Voltage Kv	Bolt qty	Main wire mm ²	Branch wire mm ²	Wt. kg
IPCB-1	1	1	35-95	10-25	0.99
IPCB-2	1	1	35-95	6-16	0.99
IPCB-3	1	1	35-95	25-70	0.99
IPCB-4	1	1	25-70	6-16	0.99

Material: plastic body, aluminum/copper teeth.

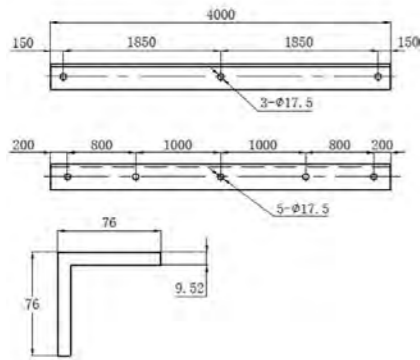
1.1.1 Flat Crossarm Braces

HE Code	Dimensions				Wt/100 kgs
	A	B	C	E	
CBF14-26	26" (660.4)	24" (609.6)	14" (6.35)	1 1/4" (31.75)	104.33
CBF14-28	28" (711.2)	26" (660.4)	14" (6.35)	1 1/4" (31.75)	108.86
CBF14-30	30" (762.0)	28" (711.2)	14" (6.35)	1 1/4" (31.75)	115.67
CBF14-32	32" (812.8)	30" (762.0)	14" (6.35)	1 1/4" (31.75)	124.74
CBF14-34	34" (863.6)	32" (812.8)	14" (6.35)	1 1/4" (31.75)	133.81
CBF14-36	36" (914.4)	34" (863.6)	14" (6.35)	1 1/4" (31.75)	142.88
CBF14-38	38" (965.2)	36" (914.4)	14" (6.35)	1 1/4" (31.75)	151.95
CBF732-20	20" (508)	18" (457.2)	7/32" (5.56)	1 7/32" (30.95)	63.50
CBF732-26	26" (660.4)	24" (609.6)	7/32" (5.56)	1 7/32" (30.95)	83.91
CBF732-28	28" (711.2)	26" (660.4)	7/32" (5.56)	1 7/32" (30.95)	90.72
CBF732-30	30" (762.0)	28" (711.2)	7/32" (5.56)	1 7/32" (30.95)	97.52
CBF732-32	32" (812.8)	30" (762.0)	7/32" (5.56)	1 7/32" (30.95)	102.06

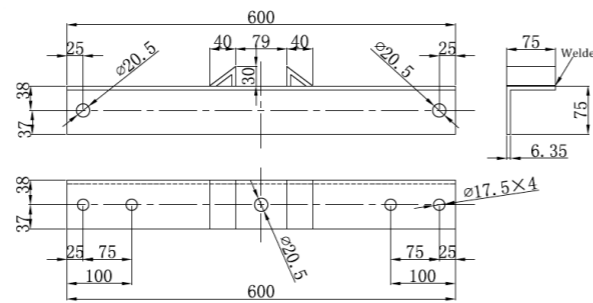
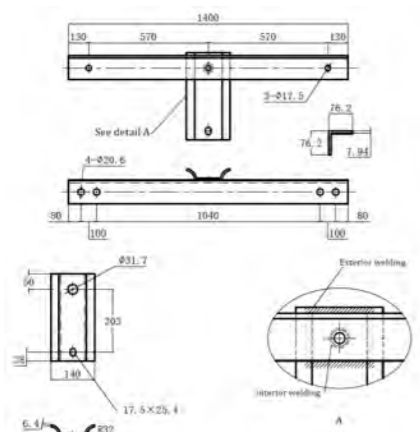
Material: carbon steel hot dip galvanized to ASTM A153/ASTM A123.



1.1.2 Angle Crossarms



HE Code	Product description
CA01-4000	Angle cross arms



HE Code	Product description
CA02-1400	Angle cross arms

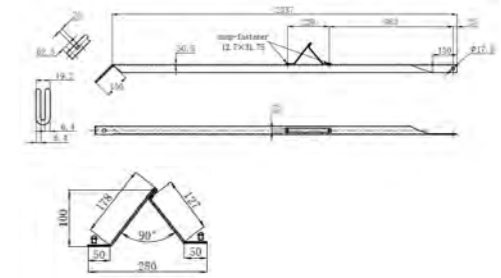
HE Code	Product description
CA03-600	Angle cross arms

Material: carbon steel hot dip galvanized to standard ASTM A153/ASTM A123.

1.1.3 Alley Arm Braces

HE Code	Product description
CBA2337	Alley arm braces

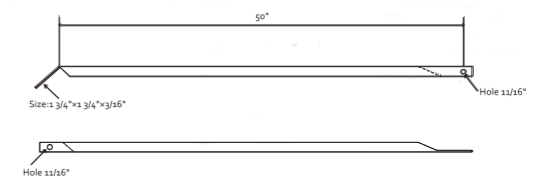
Material: carbon steel hot dip galvanized.



1.1.4 Side Arm Braces

HE Code	Product description	Wt. kg
CBS50	Side arm braces	4.22

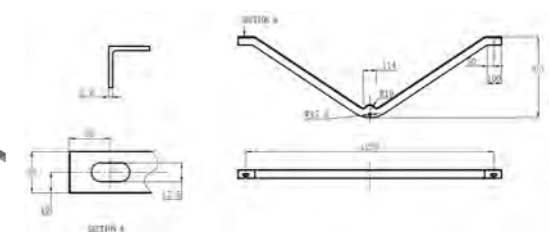
Material: carbon steel hot dip galvanized.



1.1.5 Crossarm V Braces

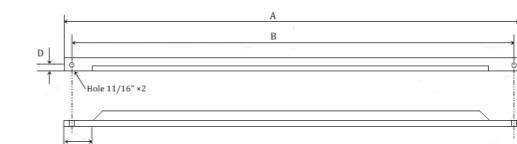
HE Code	Product description	Wt. kg
CBV1220	Crossarm V braces	3.9

Material: carbon steel hot dip galvanized.



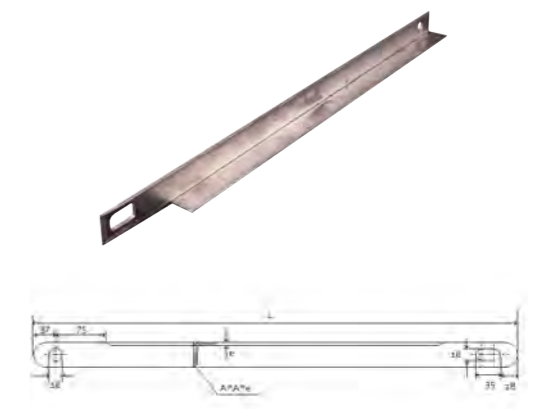
1.1.6 Angle Crossarm Braces

HE Code	Dimensions			
	A	B	C	D
CBV50	50"	48"	4 1/2"	3/4"
CBV74	74"	72"	4 1/2"	7/8"



HE Code	Dimensions			Wt. kg
	A	e	L	
CBV02-38-710	38(1 1/2")	4.5(3/16")	710(28")	1.9
CBV02-38-900	38(1 1/2")	4.5(3/16")	900(35 1/2")	2.4
CBV02-38-1350	38(1 1/2")	4.5(3/16")	1350(53")	3.6
CBV02-51-800	51(2")	6.35(1/4")	800(31 1/2")	3.8
CBV02-51-910	51(2")	6.35(1/4")	910(36")	4.32
CBV02-51-1000	51(2")	6.35(1/4")	1000(39 1/2")	4.75
CBV02-64-1200	64(2 1/2")	6.35(1/4")	1200(47")	7.32
CBV02-64-1350	64(2 1/2")	6.35(1/4")	1350(53")	8.24
CBV02-64-1500	64(2 1/2")	6.35(1/4")	1500(59")	9.15
CBV02-64-1650	64(2 1/2")	6.35(1/4")	1650(65")	10.06

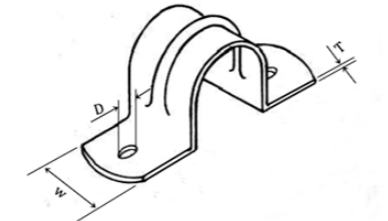
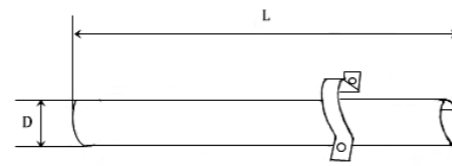
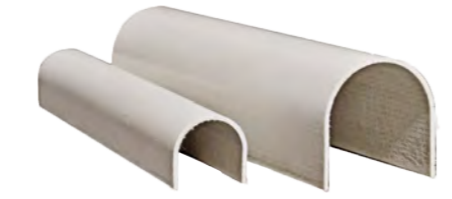
Material: carbon steel hot dip galvanized to ASTM A153/ ASTM A123.



1.2.1 U Cable Guards and Straps

HE Code	Name	Dimensions		Wt. kg
		L (feet)	D (in.)	
UCG5-1/18	U cable guards	5'	1 1/8	2.18
UCG5-23/16	U cable guards	5'	2 3/16	3.90
UCG5-33/16	U cable guards	5'	3 3/16	6.92
UCG8-3/4	U cable guards	8'	3/4	2.18
UCG8-1/18	U cable guards	8'	1 1/8	2.54
UCG8-1/14	U cable guards	8'	1 1/4	3.45
UCG8-23/16	U cable guards	8'	2 3/16	5.72
UCG8-21/4	U cable guards	8'	2 1/4	5.90
UCG8-33/16	U cable guards	8'	3 3/16	8.16
UCG8-31/4	U cable guards	8'	3 1/4	9.07
UCG8-311/16	U cable guards	8'	3 11/16	10.29

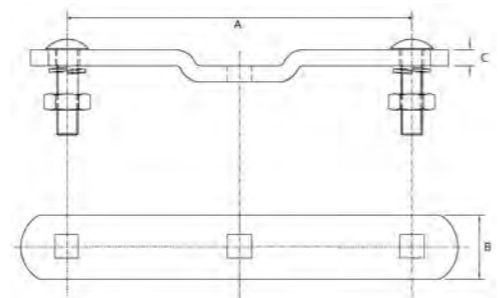
HE Code	Name	Dimensions		Wt. kg
		Steel size	Hole dia.	
CGS9/32-01	Mounting straps	1/8" x 3/4"	9/32"	0.058
CGS9/32-02	Mounting straps	3/32" x 3/4"	9/32"	0.030
CGS11/32-01	Mounting straps	3/16" x 1"	11/32"	0.288



HE Code	Name	Dimensions(in)		
		D	W	T
MS5/16	2 hole strap	5/16"	9/16"	1/25"

Material: carbon steel hot dip galvanized.

1.2.2 Cross Straps



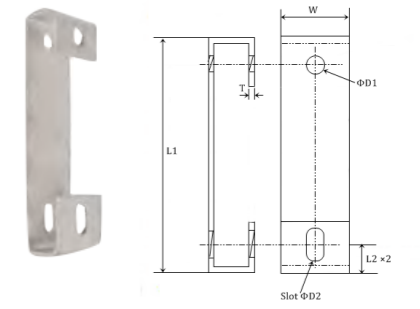
HE Code	A	Dimensions B	C	Carriage bolt	Spring washer	Hex nut UNC	Wt. kg
CS1/2	8.1/2" (215.9)	1.1/2" (38.1)	3/8" (9.5)	1/2"x2"	1/2"	1/2"	1.043

Material: carbon steel hot dip galvanized.

1.2.3 Pole Top Brackets

HE Code	Dimensions							Wt. kg
	L1	W	T	L2	Hole ΦD1	Slot ΦD2	Hole spacing	
PTB11/16	10 1/2"	3"	1/4"	1 1/4"	1 1/16"	1 1/16" x 1 1/4"	8"	1.72

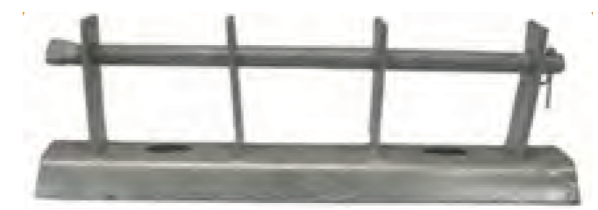
Material: carbon steel hot dip galvanized.



1.2.4 Insulator Brackets

HE Code	Product description	Wt. kg
IBS002	Two spool insulator brackets	4
IBS003	Three spool insulator brackets	6
IBS005	Five spool insulator brackets	8

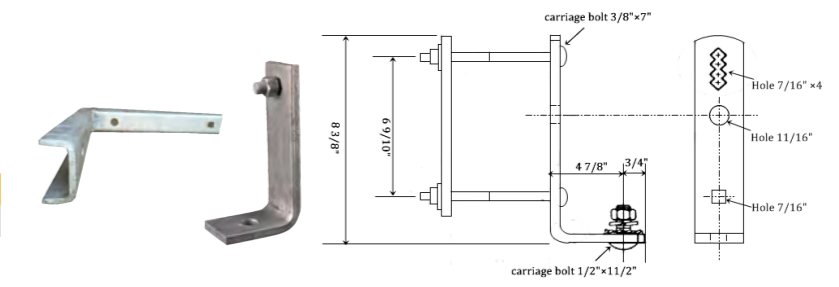
Material: Carbon steel bracket with 5/8 Bolt. Finish: Hot dip galvanized according to ASTM A153



1.2.5 L Brackets

HE Code	Product description
LB11/16	L brackets

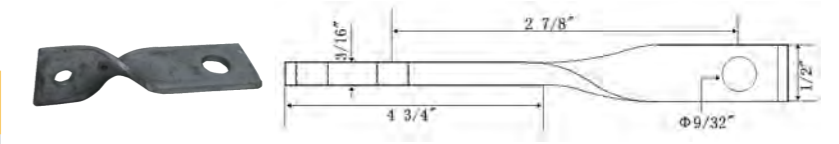
Material: ductile iron hot dip galvanized.



1.2.6 Twisted Link Brackets

HE Code	Product description	Wt. kg
TW1/2	Twisted link brackets	0.37

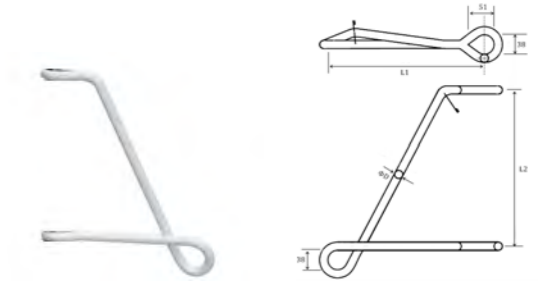
Material: ductile iron hot dip galvanized.



1.2.7 Swinging Angle Brackets

HE Code	Dimensions(mm)			Tensile Strength kN	Wt. kg
	L1	L2	ΦD1		
SB16	305	305	16	55	1.65
SB19	305	305	19	85	2.36

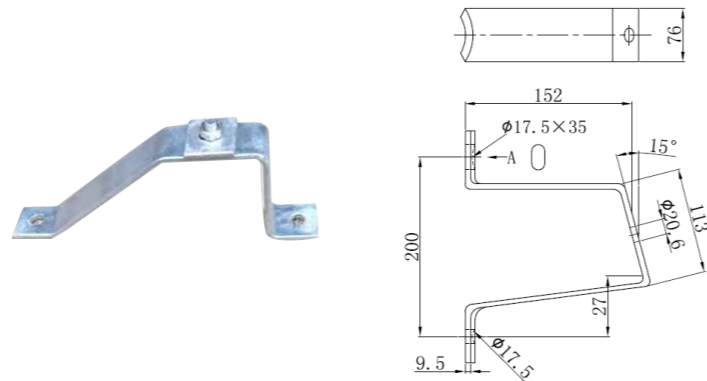
Material: carbon steel hot dip galvanized.



1.2.8 Side Post Brackets

HE Code	Product description
SPB11/16	Side post brackets

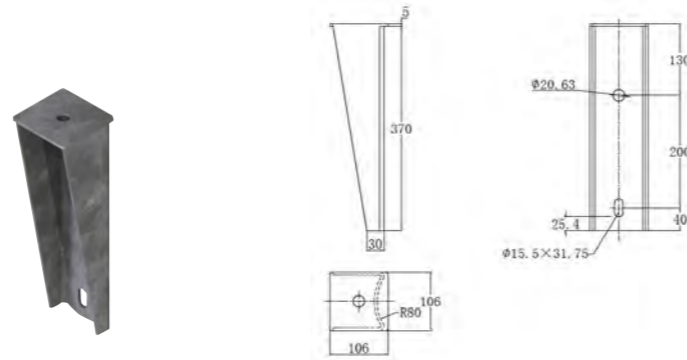
Material: carbon steel hot dip galvanized.



1.2.9 Pole Steps

HE Code	Product description
PS370	Pole steps

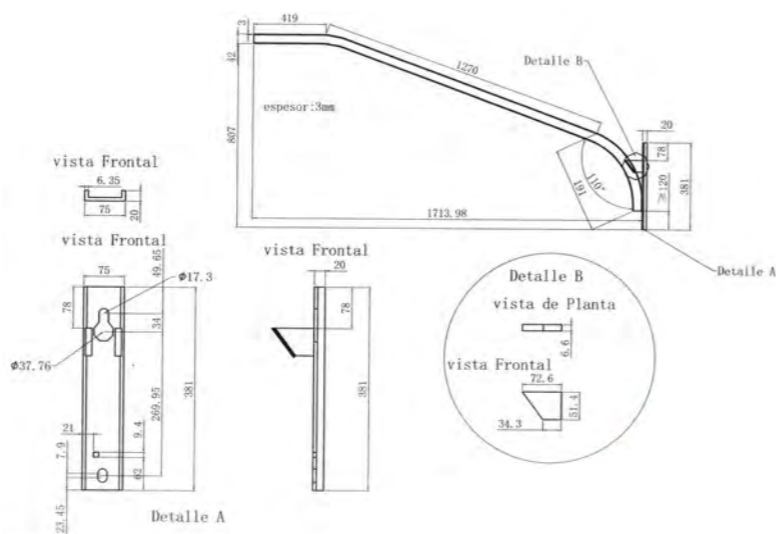
Material: carbon steel hot dip galvanized.



1.2.10 Lamp Arm Braces

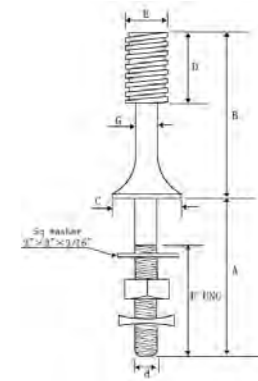
HE Code	Product description
LAB8	Lamp arm braces

Material: carbon steel hot dip galvanized to ASTM A153/ ASTM A123.



1.1 High Voltage Insulator Pins

Material : carbon steel hot dip galvanized.

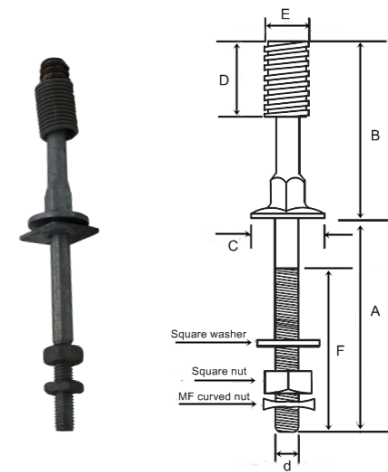


HE Code	Dimensions							d	Wt. kg	For crossarm
	A	B	C	D	E	F	G			
IPTL5/8-1	6 1/2"	6"	2 3/4"	2"	1"	3 1/2"	1"	5/8"	0.853	wood
IPTL5/8-2	7"	7"	3"	2"	1 3/8"	3 1/2"	1"	5/8"	1.710	wood
IPTS3/4-1	1 3/4"	7"	3"	2 3/8"	1 3/8"	1 1/2"	1"	3/4"	0.556	wood
IPTL3/4-1	6 1/2"	5"	2 5/8"	2 1/8"	1"	2 1/2"	7/8"	3/4"	1.052	wood
IPTL3/4-2	6 1/2"	6"	2 5/8"	2 1/8"	1"	2 1/2"	7/8"	3/4"	1.252	wood
IPTL3/4-3	6 1/2"	7"	2 3/4"	2"	1"	3 1/2"	7/8"	3/4"	0.853	wood
IPTL3/4-4	7"	7"	3"	2"	1 3/8"	3"	1"	3/4"	2.041	wood
IPTL3/4-5	7"	8"	3"	2"	1 3/8"	3"	1"	3/4"	2.087	wood
IPTL3/4-6	7"	10"	3 1/2"	2 1/8"	1 3/8"	3 1/2"	1 1/8"	3/4"	2.531	wood

1.2 Low Voltage Insulator Pins

HE Code	Dimensions							d	Wt. kg	For crossarm
	A	B	C	D	E	F				
IPDL5/8-1	5 3/4"	5"	2"	1 3/4"	1"	3"	5/8"	0.816	wood	
IPDL5/8-2	5 3/4"	6"	2"	1 3/4"	1"	3"	5/8"	0.835	wood	
IPDL5/8-3	5 3/4"	7 7/8"	3"	1 3/4"	1"	3"	5/8"	1.315	wood	
IPDL5/8-4	6 1/2"	5"	2"	1 3/4"	1"	3"	5/8"	0.871	wood	
IPDL5/8-5	6 1/2"	6"	2"	1 3/4"	1"	3"	5/8"	0.889	wood	
IPDL5/8-6	7 3/4"	7 7/8"	3"	2"	1"	3"	5/8"	1.542	wood	
IPDL3/4-1	6 1/2"	6"	2 1/2"	2"	1"	3 1/4"	3/4"	1.197	wood	
IPDS5/8-1	1 1/2"	5"	2"	1 3/4"	1"	1 1/4"	5/8"	0.562	steel	
IPDS5/8-2	1 1/2"	6"	2"	2"	1"	1 1/4"	5/8"	0.617	steel	
IPDS3/4-1	1 3/4"	6"	2 1/2"	2"	1"	1 5/8"	3/4"	0.835	steel	

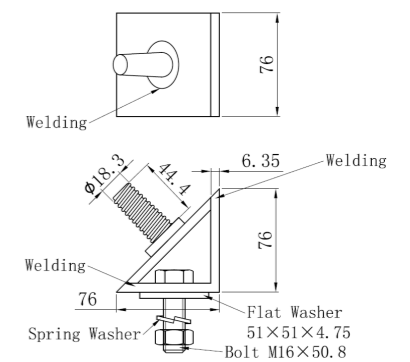
Material : carbon steel hot dip galvanized.



1.3 Crossarm Corner Pins

HE Code	Product description
CCP-01	Crossarm corner pins

Material: carbon steel hot dip galvanized.



1.4 Saddle Pins

HE Code	Thread Dia.	Dimensions		Wt. kg
		Arm Size	Height above arm	
SP1	1"	3 3/4"x4 3/4"	6"	2.72
SP1-3/8	1 3/8"	3 3/4"x4 3/4"	7"	3.59

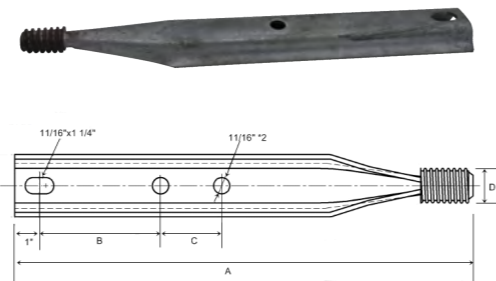
Material : carbon steel hot dip galvanized.



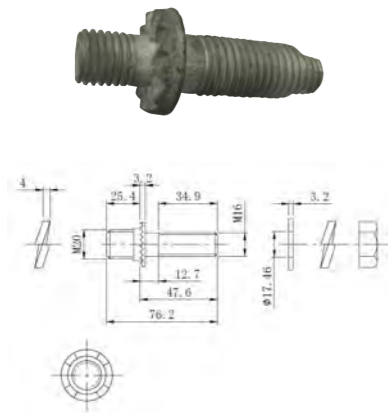
1.5 Pole Top Pins

HE Code	A	Dimensions			Wt. kg
		B	C	D	
PTP1501	15"	5"	4"	1"	1.31
PTP1801	18"	5"	3"	1"	1.61
PTP2001	20"	5"	3"	1"	1.80
PTP2002	20"	8"	4"	1"	1.81
PTP2401	24"	5"	3"	1"	2.21
PTP2402	24"	5"	3"	1 3/8"	2.23

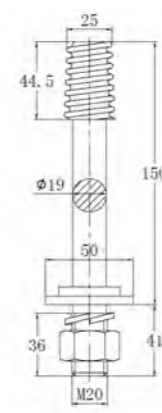
Material : carbon steel hot dip galvanized.



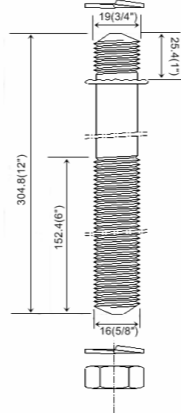
1.6 Insulator Mounting Studs



HE Code	Product description
IMS-1	Line post studs



HE Code	Product description
IMS-2	Insulator studs



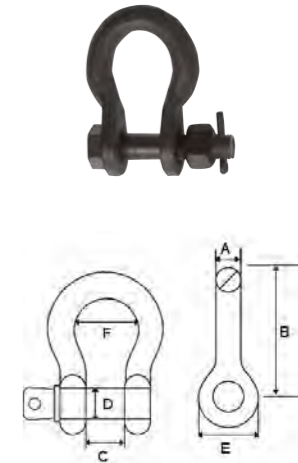
HE Code	Product description
IMS-3	Insulator mounting studs

Material : carbon steel hot dip galvanized.

1.1 Anchor Shackles

HE Code	A	B	Dimensions				Wt. kg	Ultimate strength lbs
			C	D	E	F		
AS13	13	64	20	16	35	38	0.42	18000
AS16	16	70	22	16	35	34	0.58	25000
AS20	20	76	25	20	48	40	1	45000
AS22	22	95	36	25	58	67	1.61	65000
AS25	25	95	43	29	66	70	2.40	80000

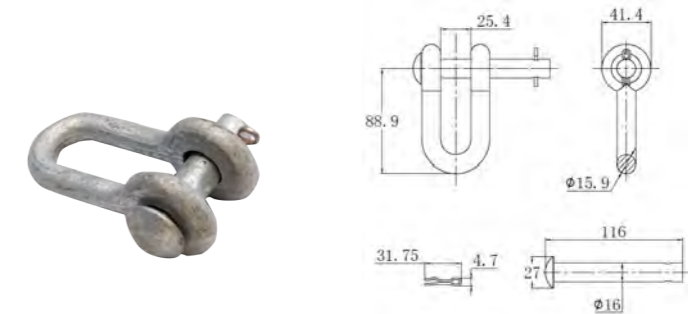
Material: forged steel for body and bolt, hot dip galvanized; stainless steel for split pin.



1.2 Chain Shackles

HE Code	Product description	Wt. kg
CS16	Chain shackles	0.6

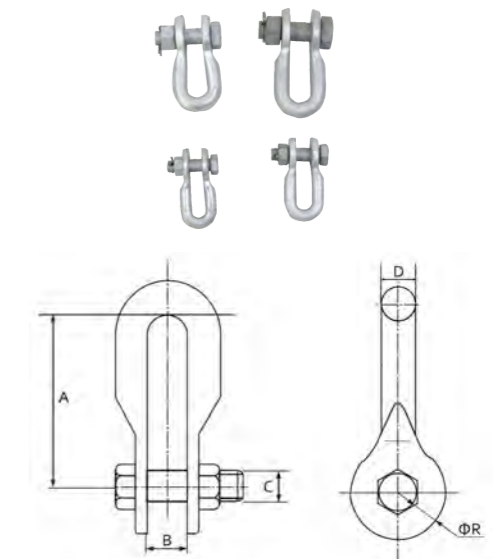
Material: forged steel for body and bolt, hot dip galvanized; stainless steel for split pin.



1.3 U Shackles

HE Code	B	D	Dimensions			Strength load KN	Wt. kg
			C	ΦR	A		
US-7	20	16	16	22	80	70	0.52
US-10	22	18	18	24	85	100	0.73
US-12	24	20	22	30	90	120	1.01
US-16	26	22	24	32	95	160	1.4
US-21	30	24	27	36	100	210	2.12
US-25	34	26	30	40	110	250	3
	38	30	36	46	130	300	4.33
US-50	44	36	42	55	150	500	7

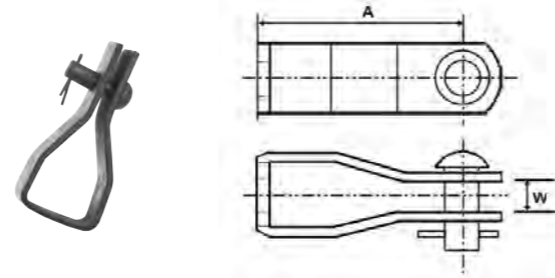
Material: forged steel for body and bolt, hot dip galvanized; stainless steel for split pin.



1.1 Deadending Clevis

HE Code	Dimensions		Steel size	Mounting hole dia.	Pin dia	Wt. kg
	A	B				
DC5/8-1	3 3/4"	1 1/8"	3/16"×1 1/2"	13/16"	5/8"	0.445
DC5/8-2	4"	5/8"	1 1/4"×2"	13/16"	5/8"	0.794

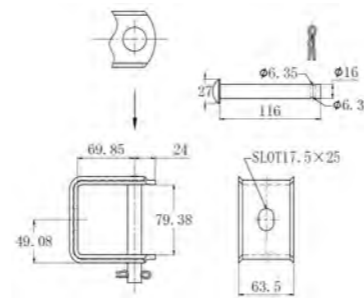
Material: steel hot dip galvanized to ASTM A153/ASTM A123.



1.2 Straight Clevis

HE Code	Product description
SC-1	Straight clevis

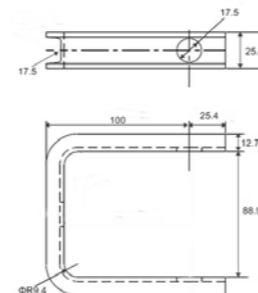
Material: one piece of flat mild steel, hot dip galvanized



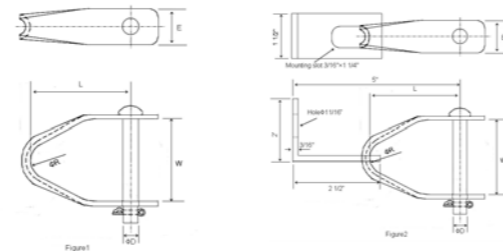
1.3 Channel Clevis

HE Code	Product description
CC-1	Channel clevis

Material: high quality channel steel, hot dipped galvanized.



1.4 Swinging Clevis



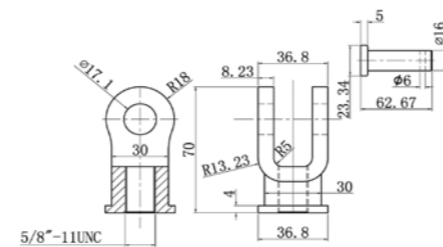
HE Code	Figure	Steel	Pin dia.	Bolt	L	Dimensions				Wt. kg
						W	E	ΦR	ΦD	
SWC-1	1	3/16" × 1 1/2"	5/8"	5/8" × 4 1/2"	5"	3 3/8"	1 1/2"	0.5"	5/8"	0.68
SWC-2	1	3/16" × 3/4"	3/8"	3/8" × 3 1/8"	2 1/2"	2 1/4"	3/4"	0.37"	3/8"	0.18
SWC-3	2	3/16" × 3/4"	3/8"	3/8" × 3 1/8"	2 1/2"	2 1/4"	3/4"	0.37"	3/8"	0.32

Material: steel hot dip galvanized to ASTM A153/ASTM A123.

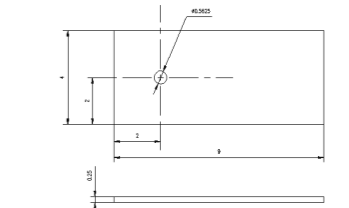
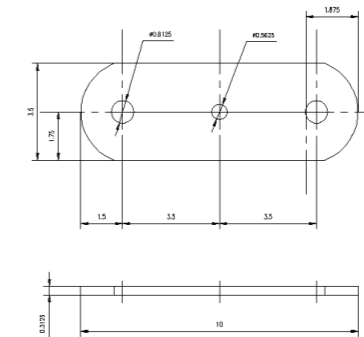
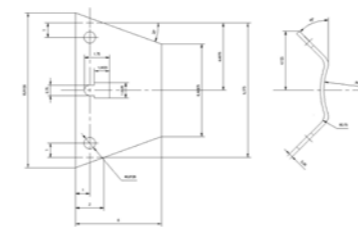
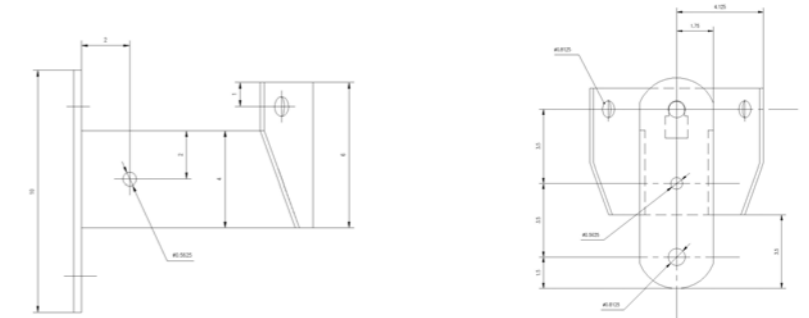
1.5 Eynut Clevis

HE Code	Product description
ENC-1	Eynut clevis

Material: steel hot dip galvanized to ASTM A153/ASTM A123.



1.1 Transformer Mounting Brackets



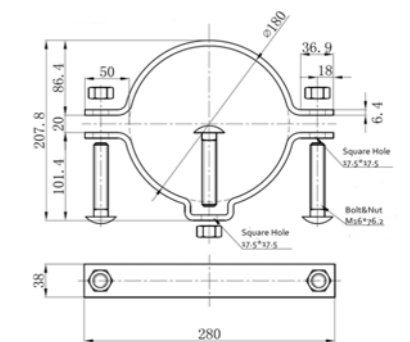
HE Code	Description	Wt. kg
TMB-1	Transformer mounting brackets	18

Material: carbon steel hot dip galvanized.

1.2 Secondary Rack Pole Bands Single Type

HE Code	Description
PBS-1	Secondary rack pole bands single type

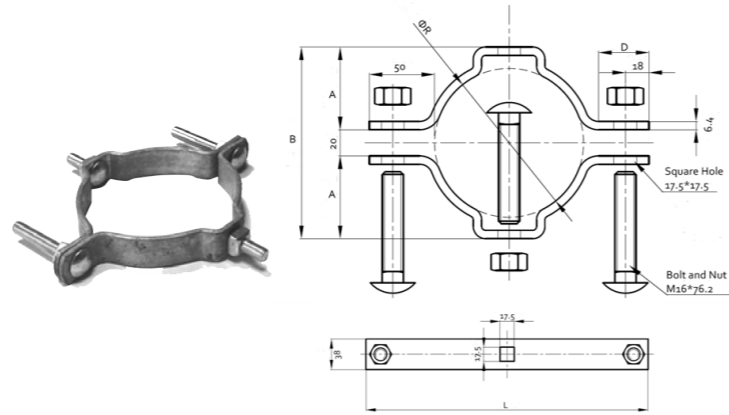
Material: steel hot dip galvanized.



1.3 Secondary Rack Pole Bands Double Type

HE Code	Dimensions(mm)				
	A	B	D	L	ΦR
PBD-1	63.4	146.8	38.5	214	114
PBD-2	76.4	172.8	37.7	240	140
PBD-3	91.4	202.8	37.3	260	160
PBD-4	101.4	222.8	36.9	280	180
PBD-5	111.4	242.8	36.6	300	200
PBD-6	121.4	262.8	36.4	320	220
PBD-7	136.4	292.8	36.1	350	250

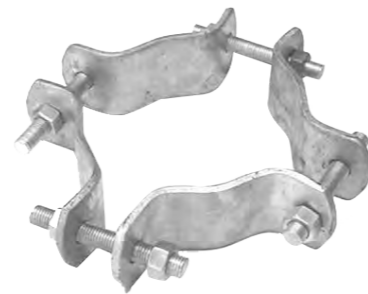
Material: steel hot dip galvanized.



1.4 4-Way Adjustable Pole Bands

HE Code	Description	Dimensions				Wt. kg
		Steel size	For pole dia.	Rod	Square hole	
PBF-1	4 way pole band	5/16"x3"	6" - 10 1/2"	3/4"x6"	9/16"	7.144
PBF-2	4 way pole band	1/4"x4"	7 1/2" - 12"	3/4"x6"	9/16"	5.634
PBF-3	4 way pole band	1/4"x4"	8" - 12"	3/4"x6"	9/16"	6.074
PBF-4	4 way pole band	1/4"x4"	11" - 16"	3/4"x6"	9/16"	7.915
PBF-5	4 way pole band	1/4"x4"	9 1/2" - 16"	3/4"x8"	9/16"	12.791

Material: steel hot dip galvanized.



1.5 Service Mast Brackets

HE Code	Dimensions Pipe dia.	Wt. kg
SMB-1	1 1/4" - 3"	0.463

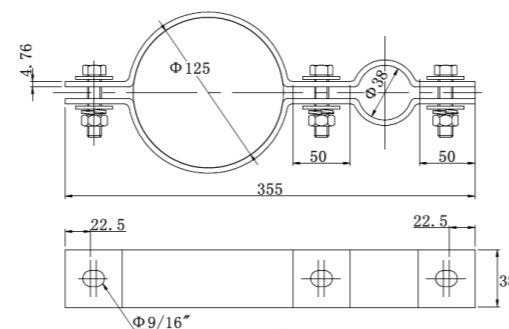
Material: steel hot dip galvanized.



1.6 Electric Pole Band Simple Clamp

HE Code	Dimensions Pipe dia.
PBE-1	Electric Pole Band Simple Clamp

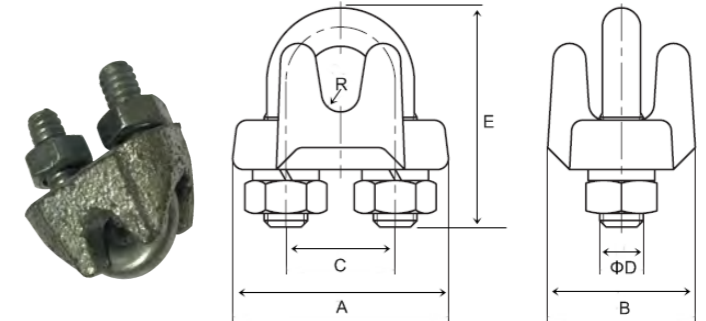
Material: steel hot dip galvanized.



1.1 Guy Clips

HE Code	Wire dia. mm	Dimensions(mm)						Wt. kg
		A	B	C	ΦD	E	R	
GC-6	2-4	30	21	15	6	30	2	0.06
GC-8	4-6	40	27	20	8	40	3.2	0.14
GC-10	6.6-8	44	32	21	10	53	5	0.15
GC-12	9-11.5	53	38	26	12	60	7	0.22
GC-14	12.5-14	62	45	31	14	74	8	0.36
GC-16	15-19	72	48	40	16	80	9.7	0.8
GC-18	23-28	100	66	55	20	102	14.7	2.23

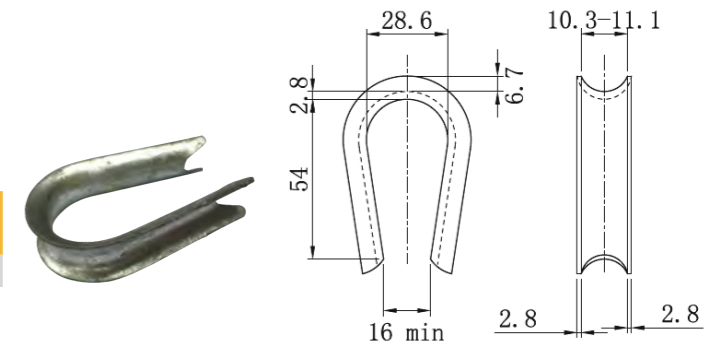
Material: ductile iron for body; high strength steel for U-bolts.



1.2 Guy Wire Thimbles

HE Code	Product description	Wt. kg
GWT3/8	Guy wire thimble 3/8"	37.2

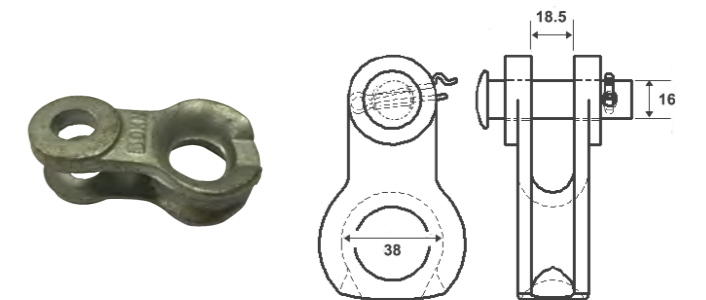
Material: carbon steel hot dip galvanized.



1.3 Guy Wire Thimble Clevis

HE Code	Product description	Wt. kg	Min failing load kN
GWTC-1	Guy Wire Thimble Clevis	0.5	70

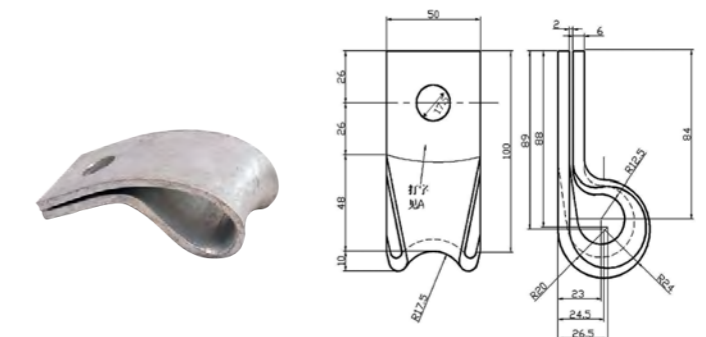
Material: ductile iron for part body, hot dip galvanized.



1.4 Guy Thimbles

HE Code	Description	Wt. kg
GT11/16	Guy thimble	0.36

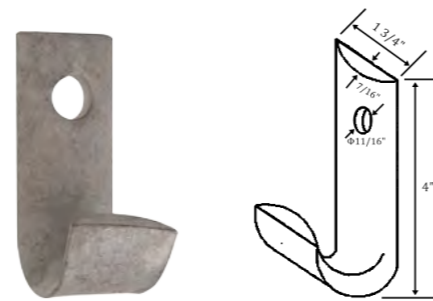
Material: carbon steel hot dip galvanized.



1.5 Guy Hooks

HE Code	Description	Wt. kg
GT11/16	Guy hooks	0.35

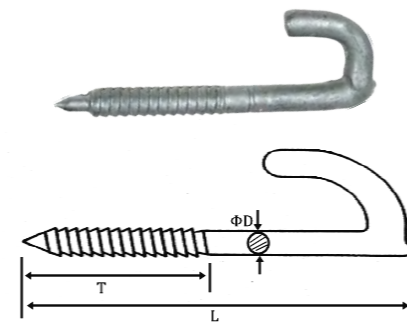
Material: carbon steel hot dip galvanized.



1.6 Drive Hooks

HE Code	Description	ΦD	Dimensions L	T	Wt. kg
GH5/16	Drive hook	5/16"	3 1/2"	2"	49.89
GH3/8	Drive hook	3/8"	4"	2"	58.97
GH7/16	Drive hook	7/16"	4 3/4"	2 1/2"	122.47

Material: carbon steel hot dip galvanized.

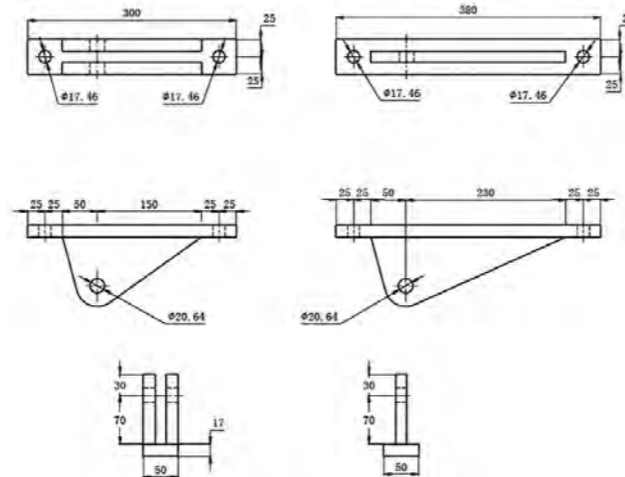


1.7 Pole Eye Plates



HE Code	Description
PEP11/16	Pole eye plates

Material : ductile iron hot dip galvanized to ASTM A153/ASTM A123.



1.8 Stainless Steel Straps and Buckles

HE Code	Dimensions			Max Tensile Strength kg	Stainless steel buckles Size
	Width	Length	Thickness		
SSS1/2	13	30.5	0.8	700	13
SSS5/8	16	30.5	0.8	850	16
SSS3/4	19.5	30.5	0.8	1000	19.5

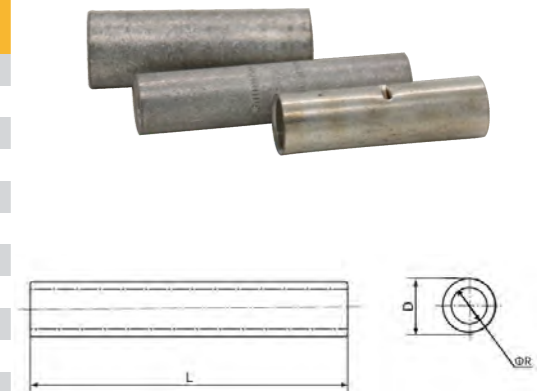
Material: stainless steel.



1.1 Splicing Sleeves

HE Code	Dimensions(mm)			Min slip strength Kn	Wt. kg
	D	L	ΦR		
SSA-1	34	380	23	61.8	0.655
SSA-2	34	400	21	56.5	0.744
SSA-3	34	410	22	61.1	0.745
SSA-4	36	430	24.5	76.2	0.85
SSA-5	36	460	23	70	0.9
SSA-6	36	440	23	80	0.84
SSA-7	36	470	24	100	1.01
SSA-8	40	470	24.5	65	1.27
SSA-9	40	490	25	70	1.3
SSA-10	40	480	25.5	80	1.27
SSA-11	40	490	25.5	90	1.28
SSA-12	40	490	26	100	1.3
SSA-13	42	520	27	120	1.48
SSA-14	45	550	28.5	85	1.75
SSA-15	45	550	28.5	90	1.78
SSA-16	45	540	28.5	100	1.79
SSA-17	45	570	29.5	120	1.87
SSA-18	48	560	29.5	130	2.28
SSA-19	52	620	31.5	110	2.82
SSA-20	52	610	31.5	120	2.88
SSA-21	52	640	32.5	150	2.93
SSA-22	60	690	34.5	140	3.8
SSA-23	60	680	36	155	3.63

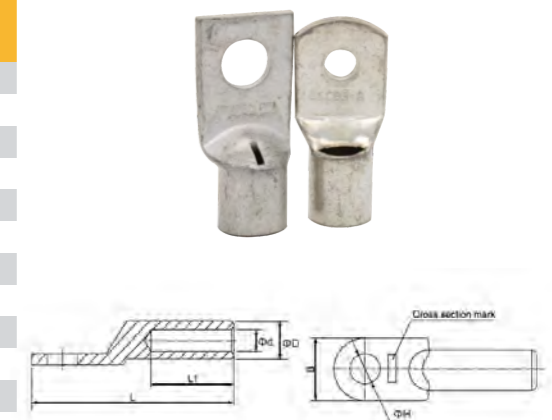
Material: aluminum, chemically burnt.



1.2 Compression Cable Lugs

HE Code	Dimensions(mm)			L	L1	Wt./1000 kg
	ΦH	ΦD	Φd			
CCL-1	5.5	4.2	2.5±0.3	20	7	5
CCL-2	5.5	4.8	3.1±0.3	21	7	3
CCL-3	6.2	5.5	3.8±0.3	24	9	3
CCL-4	6.2	6.8	4.8±0.3	25	10	3
CCL-5	8.5	7.5	5.5±0.3	32	13	5
CCL-6	8.5	9	7±0.3	38	16	7
CCL-7	10.5	10.5	8.2±0.3	40	17	10
CCL-8	10.5	12.5	9.8±0.3	50	21	18
CCL-9	12.5	14.5	11.5±0.3	54	24	25
CCL-10	12.5	17.5	13.8±0.3	60	27	45
CCL-11	12.5	19.5	15.5±0.3	70	30	61
CCL-12	16.5	21	16.5±0.3	76	34	75
CCL-13	16.5	23.5	18.8±0.3	84	36	106
CCL-14	16.5	26.5	21±0.4	90	38	156
CCL-15	16.5	30	24±0.4	98	42	253
CCL-16	16.5	34	26.5±0.4	115	49	360
CCL-17	20.5	38	30±0.4	130	55	456
CCL-18	20.5	45	30±0.4	130	55	510

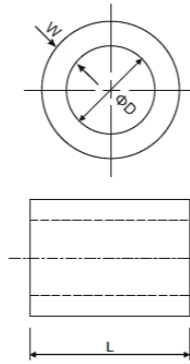
Material: aluminum or aluminum alloy, chemically burnt.



1.3 Space Pipe

HE Code	L	D	Dimensions(in) W	Wt. kg
SPA-1	38	19	2	0.03
SPA-2	38	25.4	2.65	0.05

Material: aluminum, copper.



1.4 Preformed Armor Rods



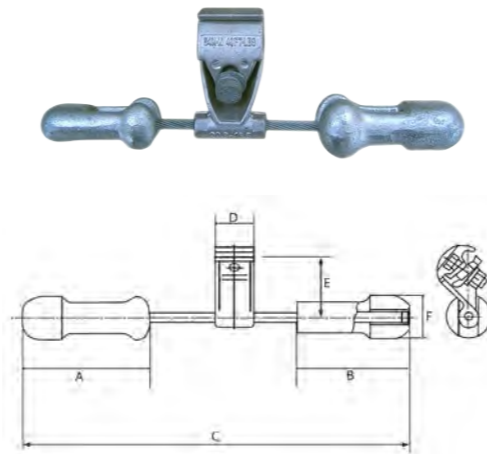
HE Code	Dimensions			Wt. kg	Color Code	Material	
	Dia. of Strand	Wires/Strand	L				
HE-1102	3/16"	0.186"	7	20"	0.136	Red	Galvanized steel
		0.195"	7				Galvanized steel
HE-1103	7/32"	0.216"	7	24"	0.172	Green	Galvanized steel
HE-1104	1/4"	0.259"	3	25"	0.218	Yellow	Galvanized steel
		0.24"	7				Galvanized steel
HE-1105	9/32"	0.279"	7	28"	0.236	Blue	Galvanized steel
HE-1106	5/16"	0.312"	3	31"	0.354	Black	Galvanized steel
		0.312"	7				Galvanized steel
		0.327"	7				Galvanized steel
HE-1107	3/8"	0.356"	3	35"	0.463	Orange	Galvanized steel
		0.36"	7				Galvanized steel
HE-1108	7/16"	0.435"	7	38"	0.726	Green	Galvanized steel
HE-2115	1/2"	0.495"	7	49"	1.43	Blue	Galvanized steel
		0.5"	19				Galvanized steel
HE-2116	9/16"	0.564"	7	55"	2.18	Yellow	Galvanized steel
		0.565"	19				Galvanized steel
HE-2111	5/8"	0.621"	7	64"	2.95	Black	Galvanized steel
		0.625"	19				Galvanized steel
HE-2112	3/4"	0.75"	19	76"	4.9	Orange	Galvanized steel
HE-2115	7/8"	0.885"	19	90"	6.89	Green	Galvanized steel
HE-7023	1"	1"	19	125"	11.5	Blue	Galvanized steel
HE-7047	1"	1.001"	37	125"	11.5	Blue	Galvanized steel
HE-4102	3#12	0.174"	/	18"	0.095	Orange	Aluminum Clad Steel
HE-4108	4M	0.22"	/	21"	0.18	Green	Aluminum Clad Steel
	3#10	0.22"	/				Aluminum Clad Steel
HE-4110	3#9	0.247"	/	24"	0.18	Yellow	Aluminum Clad Steel
	6M	0.242"	/				Aluminum Clad Steel
HE-4113	3#8	0.277"	/	24"	0.2	Blue	Aluminum Clad Steel
	8M	0.272"	/				Aluminum Clad Steel

HE Code	Dimensions			Wt. kg	Color Code	Material	
	Dia. of Strand	Wires/Strand	L				
HE-4116	3#7	0.311"	/	26"	0.263	Black	Aluminum Clad Steel
	10M	0.306"	/				Aluminum Clad Steel
	5/16"-7#10	0.306"	/				Aluminum Clad Steel
HE-4118	11.5M	0.33"	/	26"	0.272		Aluminum Clad Steel
HE-4119	3#6	0.349"	/	29"	0.372	Yellow	Aluminum Clad Steel
	12.5M	0.343"	/				Aluminum Clad Steel
	11/32"-7#9	0.343"	/				Aluminum Clad Steel
HE-4120	14M	0.363"	/	31"	0.48	Orange	Aluminum Clad Steel
HE-4122	3#5	0.392"	/	32"	0.5	Black	Aluminum Clad Steel
	3/8"-7#8	0.385"	/				Aluminum Clad Steel
	16M	0.386"	/				Aluminum Clad Steel
HE-4124	18M	0.417"	/	34"	0.67	Green	Aluminum Clad Steel
HE-4125	7/16"-7#7	0.433"	/	36"	0.725	Yellow	Aluminum Clad Steel
HE-4126	20M	0.444"	/	37"	0.998	Blue	Aluminum Clad Steel
HE-4128	1/2"-7#6	0.486"	/	39"	1.04	Red	Aluminum Clad Steel
HE-4130	25M	0.519"	/	43"	1.4	Yellow	Aluminum Clad Steel
HE-4131	7#5	0.546"	/	44"	1.45	Blue	Aluminum Clad Steel
HE-4168	7#6	0.475-0.494"	/	42"	1.09	Green	Aluminum Clad Steel
HE-4169	19#10	0.495-0.515"	/	44"	1.24	Red	Aluminum Clad Steel
HE-4170	25M	0.516-0.536"	/	47"	1.49	Yellow	Aluminum Clad Steel
HE-4171	7#5	0.537-0.555"	/	48"	1.51		Aluminum Clad Steel
HE-4172	/	0.556-0.57"	/	49"	2.05	Blue	Aluminum Clad Steel
HE-4173	19#9	0.571-0.591"	/	50"	1.54	Orange	Aluminum Clad Steel
HE-4174	/	0.592-0.612"	/	50"	1.51	Green	Aluminum Clad Steel
HE-4175	/	0.613-0.635"	/	54"	2.2	Yellow	Aluminum Clad Steel
HE-4176	19#8	0.636-0.661"	/	56"	2.26	Black	Aluminum Clad Steel
HE-4177	19x0.1363"	0.662-0.686"	/	59"	2.99	Blue	Aluminum Clad Steel
HE-4178	/	0.687-0.712"	/	61"	3.08	Red	Aluminum Clad Steel
HE-4179	19#7 37#10	0.713"-0.741"	/	63"	3.17	Black	Aluminum Clad Steel
HE-4180	19x0.1499"	0.742"-0.772"	/	71"	3.72	Yellow	Aluminum Clad Steel
HE7100	3/16"	0.186"	7	18"	0.113	Red	Aluminized
		0.195"	7				Aluminized
HE7102	1/4"	0.259"	3	23"	0.2	Yellow	Aluminized
		0.24"	7				Aluminized
HE7103	9/32"	0.279"	7	24"	0.245	Blue	Aluminized
		0.312"	3				Aluminized
HE7104	5/16"	0.312"	7	27"	0.33	Black	Aluminized
		0.327"	7				Aluminized
HE7106	3/8"	0.356"	3	32"	0.57	Orange	Aluminized
		0.36"	7				Aluminized
HE7107	7/16"	0.435"	7	34"	0.816	Green	Aluminized

1.1 Stockbridge Dampers

HE Code	Conductor Range mm	Dimensions(mm)						Wt. kg
		A	B	C	D	E	F	
FR-1	7-12	138	118	429	50	81	48	2.54
FR-2	11-20	138	118	429	50	81	48	2.61
FR-3	18-28	167	146	505	60	91	57	5
FR-4	26-36	218	163	550	60	97	64	6
FR-5	33-38	218	163	550	70	127	64	7.9
FR-6	36-40	325	325	650	70	127	74	11

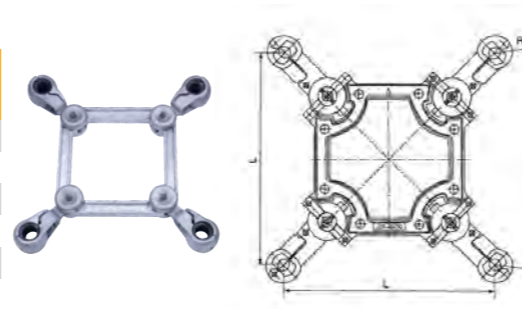
Material: zinc alloy, aluminum alloy, steel



1.2 Spacer Dampers

HE Code	Conductor mm ²	Dimensions(mm)		Wt. kg
		L	R	
SSD-1	300	450	9.7	7.8
SSD-2	300	450	10.6	7.8
SSD-3	400	450	12	7.8
SSD-4	400	450	11.4	7.8
SSD-5	400	450	12.6	7.8

Material: aluminum alloy, steel, silicon rubber.



1.3 Spiral Vibration Dampers

HE Code	Cable dia. mm	Space distance mm	Length mm	Type
SDVR-1	9.1-11	300	1350	Standard corrosion resistant
SDVR-2	11.1-13	300	1350	Standard corrosion resistant
SDVR-3	13.1-15	300	1350	Standard corrosion resistant
SDVR-4	15.1-17	300	1350	Standard corrosion resistant
SDVR-5	17.1-19	300	1350	Standard corrosion resistant
SDVR-6	19.1-21	300	1350	Standard corrosion resistant

Material: steel hot dip galvanized.

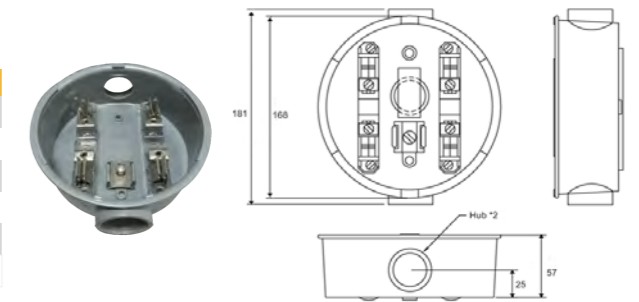


1.1 Circular Meter Boxes

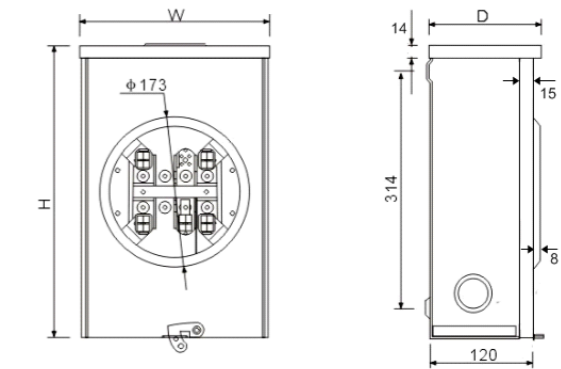
HE Code	Dimensions(mm)	Hub size
MBC1/2		1/2"
MBC3/4	30-100 Amps,220/240 V,Single-phase,	3/4"
MBC1	3 wires,4 terminals/jaws,	1"
MBC1-1/4	Die-cast aluminum	1 1/4"
MBC1-1/2		1 1/2"

* 5&6 terminals are available upon request.

Material: die-cast aluminum shell, copper.



1.2 Square Meter Boxes



HE Code	Description	H	W	D	Hub size
MBS01	200 Amps,240/600 V,Single phase,3 wires,4 terminals, Ring type, phosphated treatment	382	218	137	2"
MBS02	200 Amps,240/600 V,Single phase,3 wires,4 terminals,Ringless, phosphated treatment	382	218	137	2"
MBS03	200 Amps,240/600 V,Single phase,3 wires,4 terminals,Ringless, phosphated treatment	398	284	115	2"
MBS04	200 Amps,240/600 V,3 phase,4 wires,7 terminals,Ring type, phosphated treatment	382	218	137	2"
MBS05	200 Amps,240/600 V,3 phase,4 wires,7 terminals,Ringless, phosphated treatment	382	218	137	2"
MBS06	100 Amps,220/240 V,Single phase,3 wires,4 terminals,Ring type, phosphated treatment	292	203	84	1 1/2"
MBS07	125 Amps,220/240 V,Single phase,3 wires,4 terminals,Ring type, phosphated treatment	292	203	84	1 1/2"

* Hub size from 1" to 2" are available.

Material: steel shell is epoxy baked gray powder finished. Extruded aluminum connectors are tin plated.

1.3 Plastic Meter Boxes



1.4 Meter Socket Sealing Ring



HE Code	Description	Type
SRS01	Screw type sealing ring	1.5

1.1.1 Insulation Piercing Connectors

Product type and application scope

1 KV Series products (Low voltage series)



Model	Main line section	Branch section	Nominal current	Outline size	Weight	Piercing depth
HE756	0.75-6	0.75-6	41	21×27×23	10	1-1.5
HE041	6-10	1.5-6	41	26×39×54	85	1.5-2
HE101	1.5-2.5	1.5-10	55	27×41×62	55	1.5-2
HEEP	6-120	1.5-16	55	27×41×62	55	1-2
HE2-95	16-150	4-35(50)	157	46×52×87	160	1.5-2
HE2-150	50-150	6-35(50)	157	46×52×87	162	1.5-2.5
HE3-95	25-95	25-95	214	50×61×100	198	1.5-2
HE4-150	50-150	50-150	316	50×61×100	219	1.5-2.5
HE6	120-240	25-120	211	52×68×100	360	1.5-2.5
HE7	150-240	10-25	102	52×68×100	336	1.5-2.5
HE240	95-240	95-240	425	83×130×130	1040	1.5-2.5
HE300	300	ANY	425	83×130×130	1040	1.5-2.5
HE400	400	ANY	425	83×130×130	1040	1.5-2.5



Model	Conductor Range(mm ²)		No.Bolt
	Main	Tap	
IPC3.1	16-95	10-25	1
IPC3.2	70-95	70-95	1
IPC3.3	120-185	16-25	1
IPC3.4	70-185	70-185	2
TTD121F	25-95	2.5-25	1
TTD151F	25-95	(2.5)6-35	1
TTD201F	35-95	25-95	1
TTD281F	50-185	6-35	1
TT2D82F	25-95	25-35	1
TTD451F	95-240	95-240	2

1.1.2 JBC Insulation Piercing Connectors

Product type and application scope

1 KV Series products (Low voltage series)



Model	Conductor Range(mm ²)		No.Bolt
	Main	Tap	
JBC-1	35-70	6-35	1
JBC-2	35-150	35-150	1
JBC50-240	50-240	50-240	2



Model	Conductor Range(mm ²)	
	Main (Al/Cu) (mm ²)	Tap (Al/Cu) (mm ²)
DCNL-1	10-95	1.5-10
DCNL-2	16-95	4-35
DCNL-3	25-120	25-95
DCNL-4	50-150	4-35
DCNL-5	35-150	35-150
DCNL-1D	10-95	1.5-10
DCNL-4D	50-150	4-35

1.1.3 CT Insulation Piercing Connectors

Product type and application scope

1 KV Series products (Low voltage series)

Modle	Conductor Range(mm ²)	
	Main	Tap
CT-1	6-95	1.5-6
CT-2	6-150	2.5-25
CT-3	6-150	4-35
CT-4	25-150	25-95
CT-5	25-150	16-95



CT-1



CT-2



CT-3



CT-4



CT-5

2

1.1.3 YN Insulation Piercing Connectors

Product type and application scope

1 KV Series products (Low voltage series)

Modle	Conductor Range(mm ²)	
	Main	Tap
YN-1	6-25	6-25
YN-2	35-70	6-25
YN-3	35-70	35-70
YN-4/2	35-70	35-70



YN-1



YN-2



YN-3



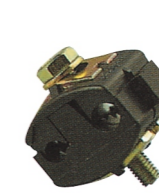
YN-4

1.1.4 Round Eye Bolts

Product type and application scope

1 KV Series products (Low voltage series)

Modle	Conductor Range(mm ²)	
	Main	Tap
ABS	25-70	6-35
MA-1	16-95	16-25
MA-2	70-95	70-95
SMHA	70-185	70-120
CPA	16-70	16-70
DP10	50-70	50-70



ABS



MA-2



HA



CPA



DP10

1.1.5 End Cap

Material: Plastic

Product property: It is used to waterproof and insulate the end of the conductor(0.6/1kV).

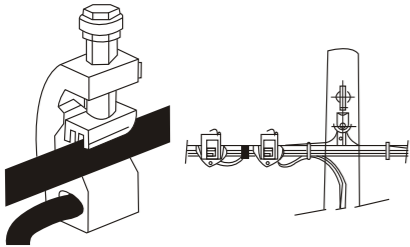
Modle	Conductor Range(mm ²)
PC6-35	6-35
PC35-70	35-70
PC70-95	70-95
PC95-120	95-120
PC120-185	120-185



1.1.4 Insulated Peircing Connector

Product type and application scope

1 KV Series products (Low voltage series)



PI-71



CD-71



PC-150



P-71



P-72



P-150



P-151

Modle	Conductor Range(mm ²)	
	Main	Tap
PI-71	35-95	4-54
CD-71	35-95	4-54
PC-150	35-150	4-50
P-71	35-95	4-50
P-72	35-95	2×(4-50)
P-150	70-150	2×(4-54)
P-151	16-150	6-95

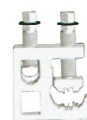
1.1.4 Insulated Peircing Connector

Product type and application scope

1 KV Series products (Low voltage series)



JBDC



JBDD

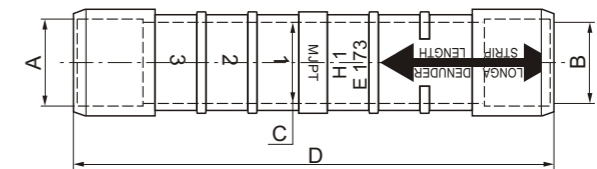
Modle	Conductor Range(mm ²)	
	Main	Tap
JBDC6-35/6-35	6-35	6-35
JBDC50-150/6-35	50-150	6-35
JBDC50-150/35-95	50-150	35-95
JBDC6-35/6-35	6-35	6-35
JBDC50-150/6-35	50-150	6-35
JBDC50-150/35-95	50-150	35-95

1.1.5 Pre-insulated Sleeve

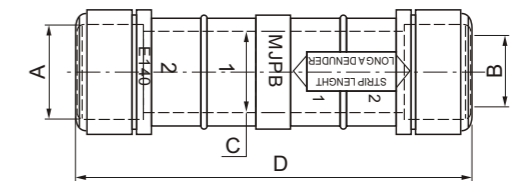
Material: Aluminum alloy



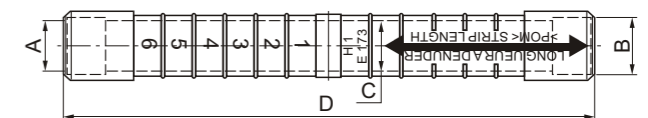
HE Code	Dimensions			
	A	B	C	D
MJPT 16/16	16	16	20	98.5
MJPT 25/25	25	25	20	98.5
MJPT 35/35	35	35	20	98.5
MJPT 50/50	50	50	20	98.5
MJPT 70/70	70	70	20	98.5
MJPT 95/95	95	95	20	98.5



HE Code	Dimensions			
	A	B	C	D
MJPT 16/16	16	16	20	98.5
MJPT 25/25	25	25	20	98.5
MJPT 35/35	35	35	20	98.5
MJPT 50/50	50	50	20	98.5



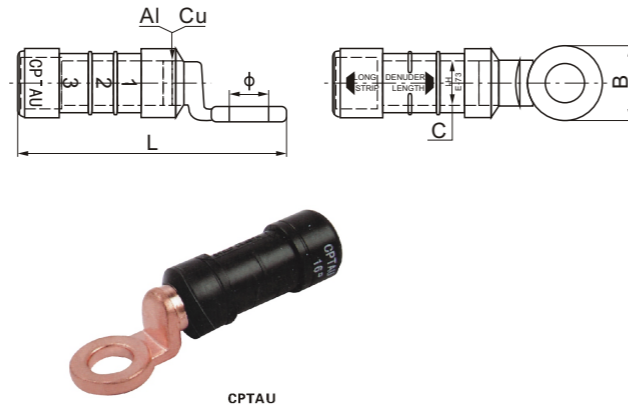
HE Code	Dimensions			
	A	B	C	D
MJPT 16/16	16	16	20	98.5
MJPT 25/25	25	25	20	98.5
MJPT 35/35	35	35	20	98.5
MJPT 50/50	50	50	20	98.5



1.1.6 Pre-insulated Bimetal Lug

HE Code	C	Dimensions		
		B	L	Ø Dia.
CPTAU 16-10	16	20	10.5	73
CPTAU 25-12	20	24	13	98.5
CPTAU 35-12	20	24	13	98.5
CPTAU 50-12	20	24	13	98.5
CPTAU 54.6-12	20	24	13	98.5
CPTAU 70-12	20	24	13	98.5
CPTAU 95-12	20	24	13	98.5

Material: E-Cu; Al-99.6%

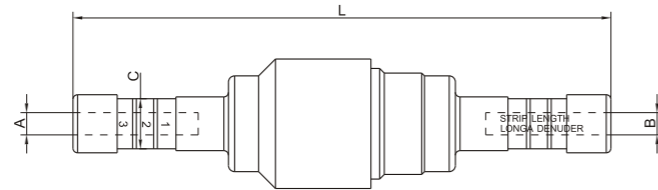


1.1.7 Pre-Insulated Sleeve (with fuse)

Material: Brass (silver plating) Aluminium

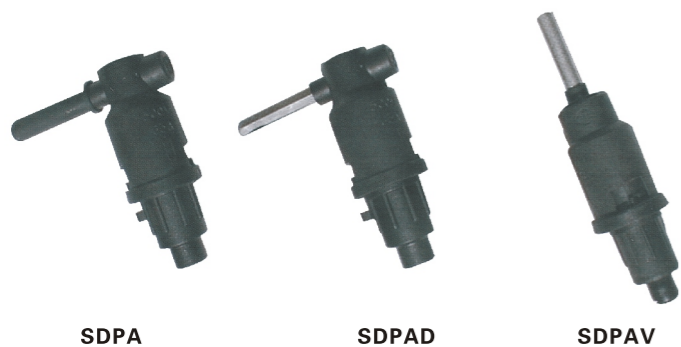


M.IPF



HE Code	Dimensions			
	A	B	C	L
MJPT 16/16	16	16	20	98.5
MJPT 25/25	25	25	20	98.5
MJPT 35/35	35	35	20	98.5
MJPT 50/50	50	50	20	98.5

1.1.8 Accessories



SDPA

SDPAD

SDPAV

1.1.9 Anchoring Bracket



HE81

HE82

HE83



HE96

HE97

HE98

Material: High strength aluminium alloy by casting
Product property: Anchoring ABC cables with neutral messenger on poles (wood, concrete etc.....), Excellent in industrial and saline environment. Fixed by 2× (14mm or 16mm) bolts or 2 stainless straps 0.75×20mm. It is in accordance with NFC 33-040.

The universal hook HE96, HE97 and HE98 is used with bands in pole installations and with screws in wall installations. The hook is delivered without screws.

1.1.9 Anchoring Clamp



PAM-06

PAM-07

PAM-08

DR1400

DR1500

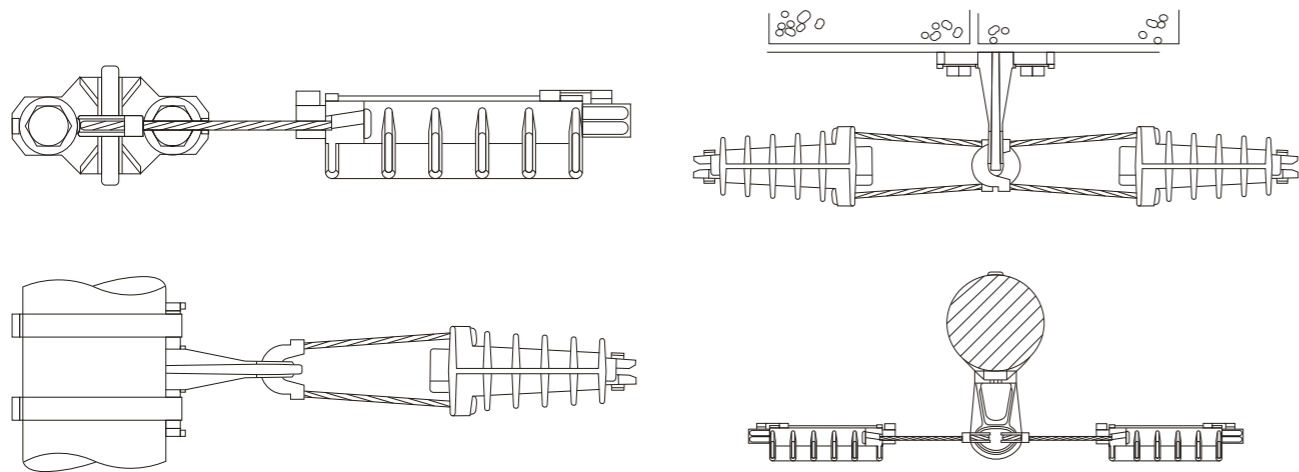
DR1600

JBG-1

Modle	Conductor Range(mm ²)	
	Type	mm ²
SDPA	Lateral isolation	-
SDPAD	Lateral skinned wire isolation	-
SDPAV	Vertical isolation	-
SDCC	Single	6/6
SDCC-R	Single	25/25
	Double	2×16+1×16

HE Code	Cross-section(mm ²)
PAM-06	16-20
PAM-07	16-25
PAM-08	16-25
DR1400	50-70
DR1500	50-70
DR1600	50-70
JBG-1	50-70

Material: High strength aluminium alloy, nylon plus fiber glass, stainless steel



HE Code	Cross-section(mm ²)
STA	1×10/1×16
STB	2×16/2×25
STC	4×16/4×25
STD	1×16/1×70
LA1	4×16/4×25
LA2	2×6/2×16
DCR-1	1×4/1×25
DCR-2	1×4/1×25
2.1	16-25
PA1500	25-50
PA2000	54.6-70

Material: Nylon plus fiber glass

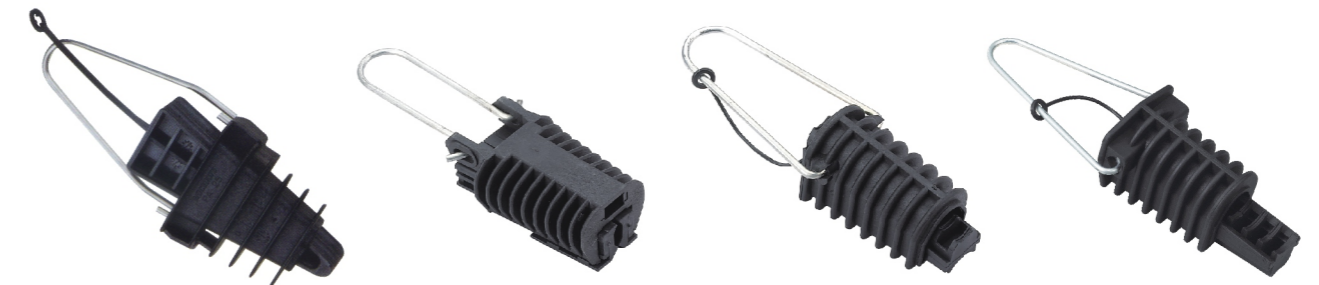


STA

STB

STC

STD



LA1

LA2

DCR-1

DCR-2



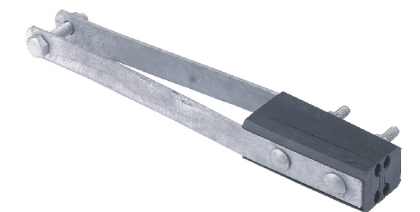
2.1

PA1500

PA2000

HE Code	Cross-section(mm ²)
NES-B1	4×(16-35)
NES-B2	4×(50-120)
NES-B3	4×(25-120)
NES-B4	4×(95-150)

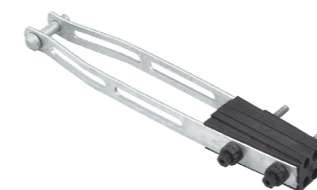
Material: Mild steel, nylon plus fiber glass



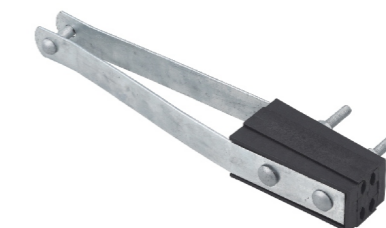
NES-B1



NES-B2



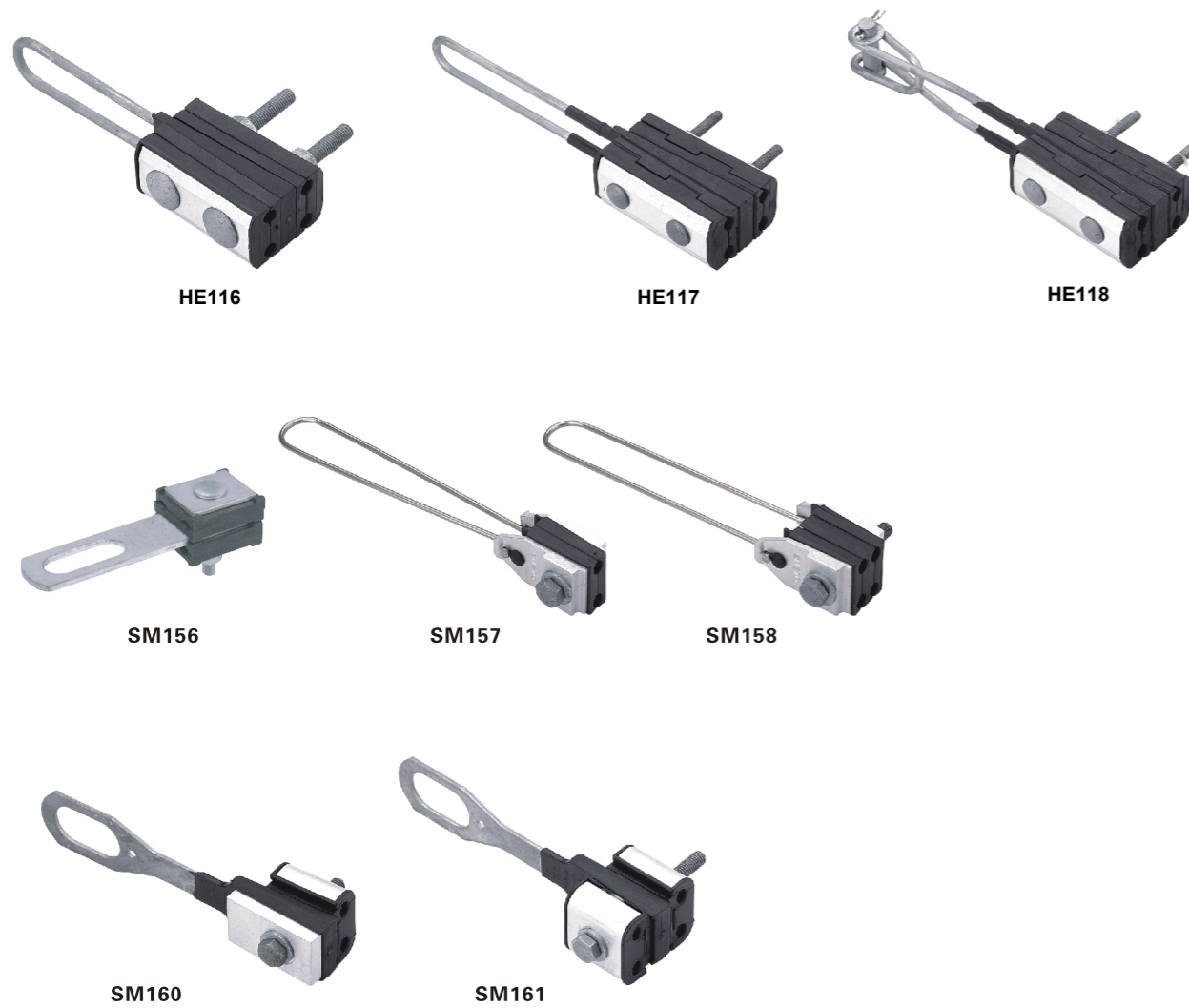
NES-B4



NES-B3

HE Code	Cross-section(mm ²)
HE116	4× (25-35)
HE117	4× (50-120)
HE118	4× (50-120)
HE156	4× (16-25)
HE157	2× (16-25)
HE158	4× (16-25)
HE160	2× (16-25)
HE161	4× (16-25)

Material: The body is made of weather resistant aluminium alloy and the plastic parts of special fibreglass reinforced plastic.



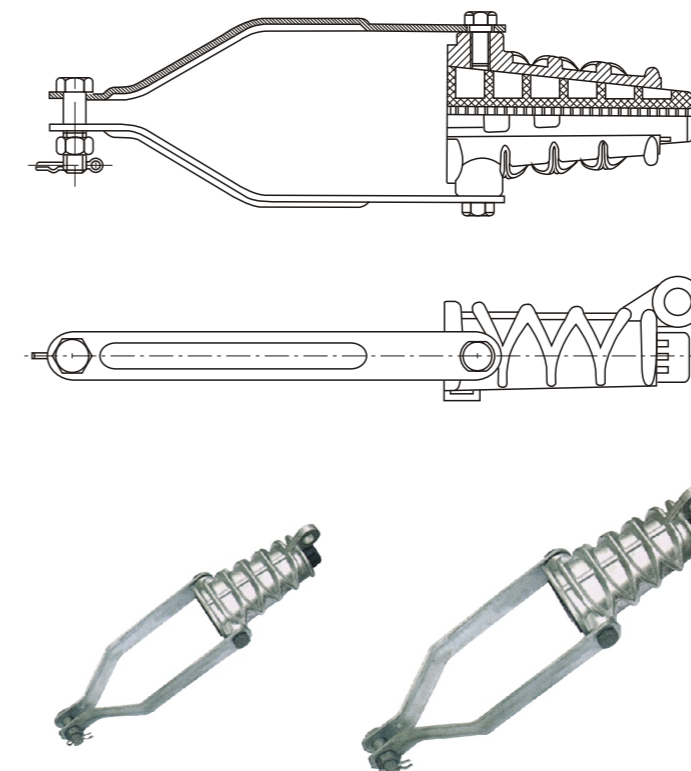
1.2.1 Suspension Clamp

HE Code	Conductor Range
HE130	2-4× (25-50) ≤60°
HE140	2-4× (25-120) ≤30°
HE136	2-4× (25-120) ≤90°

Material: The body is made of corrosion proof aluminium and the inserts of weather resistant plastic.



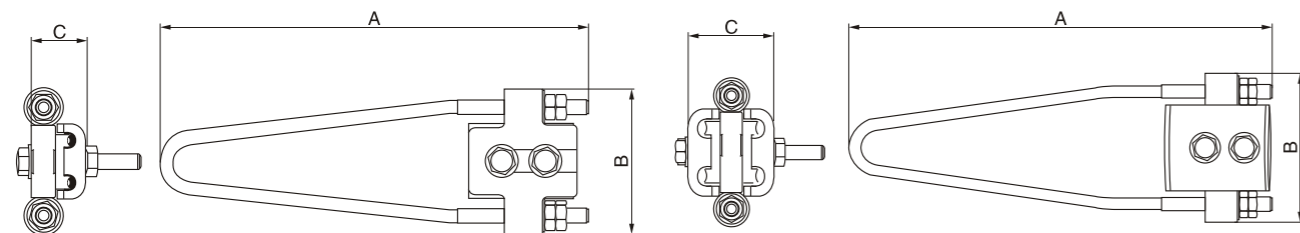
1.2.2 NEJ Wedage strain Clamp



HE Code	Applicable conductor(mm ²)			Inner clamping range	Grip strength(kN)	Failure load(kN)
	1kV	10kV	20kV			
NEJ-1	35	-	-	Φ10~Φ11	3.4	12.4
	50	16	-	Φ12~Φ13	4.6	
	70	25	-	Φ14~Φ15	6.7	
	95	35	-	Φ15~Φ17	8.9	
NEJ-2	120	50~70	25~35	Φ16~Φ18.5	11.3	20.8
	150	95	50	Φ19.00~Φ21	13.7	
NEJ-3	185	120	70	Φ21.0~Φ23	17.3	32.0
	240	150	95	Φ23~Φ25.6	22.5	
NEJ-4		185	120	Φ24~Φ26	22.5	41.7
		240	150	Φ26~Φ27.5	22.5	
		-	185~240	Φ27.5~Φ31.5	22.5	
NEJ-5		300		Φ27.5~Φ31.5	28.2	52.1

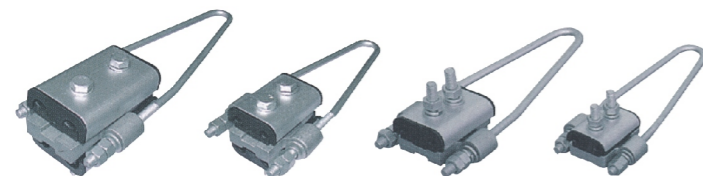
This series are mainly used in 20kV or less than 10kV distribution system to fix and tighten the aluminum insulating wires at the corner or the end of the insulators on the stilt.

1.2.3 JNS Four(two)-Core Bunched Cable Strain Clamp Series



JNS two-core bunched cable strain clamp series

JNS four-core bunched cable strain clamp series



Model	Applicable Voltage(kV)	Applicable conductor(mm ²)	Dimensions(mm)			Note
			A	B	C	
JNS-1A-1	1kV	4x10-4x16mm ²	200	78	45	Four cores
JNS-1A-2		4x16-4x50mm ²	260	100	62	
JNS-2A	1kV	4x50-4x120mm ²	330	105	72	Two cores
JNS-1C		2x10-2x16mm ²	200	78	30	
JNS-2C		2x16-2x50mm ²	260	100	40	

JNS series four-core bunched cable strain clamp series are fully used for fixing or tightening 1kV and less than 1kV overhead four(two)-cores bunched cable at ends of circuit.

1.2.4 Suspension Clamp



HE94

HE95

1.1A

1.1B



ES54-14



PS1500



SHC-1

SHC-2

SHC-3

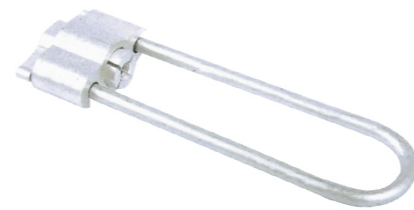
SHC-5

SHC-6

HE Code	Cross-section(mm ²)
HE94	16-95
HE95	16-95
1.1A	16-95
1.1B	16-95
ES54-14	16-95
PS1500	16-95
SHC-1	4×(16-35)
SHC-2	4×(50-120)
SHC-3	4×(50-70)
SHC-4	4×(50-70)
SHC-5	4×(70-95)
SHC-6	4×(70-95)

Product property: On poles, in alignment or angle, different level, also provide for hanging a public light bundle.

1.2.4 Dead End Clamp



Material: High strength aluminium alloy

HE Code	Cross-section(mm ²)	Failure Load (kN)
JBH-1	16	4.0
JBH-2	25	6.6
JBH-3	35	9.3
JBH-4	50	13.2
JBH-5	70	15.0

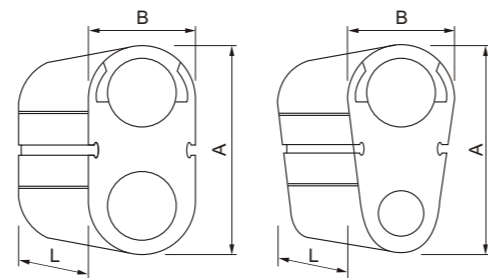
1.2.5 Connector Press Type O



CPTO type

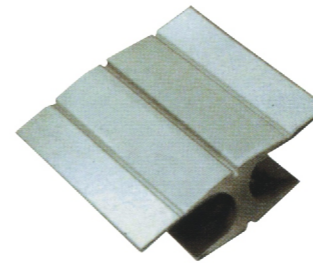


CPTO type

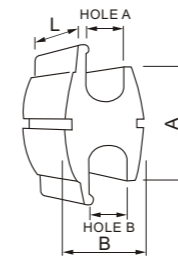


Modle	Hole1 mm ²	Hole2 mm ²	Dimensions(mm)		
			A	B	L
CPTO 10-16/10-16	10-16	10-16	18.8	10.5	35.3
CPTO 10-35/10-16	25-35	10-16	22.8	14.5	37.7
CPTO 10-35/16-35	25-35	25-35	26	14	38.6
CPTO 50-70/10-16	50-70	10-16	29.5	19.5	37
CPTO 50-70/16-35	50-70	25-35	28.4	20	38
CPTO 50-70/50-70	50-70	50-70	33.8	20	45.5
CPTO 70-150/50-70	70-150	50-70	44	23.6	60.3
CPTO 70-150/70-150	70-150	70-150	49	23.6	60.3
CPTO 150-240/70-150	150-240	70-150	54.8	30.3	65
CPTO 150-240/150-240	150-240	150-240	62.4	30.3	75.5

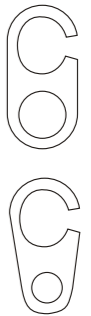
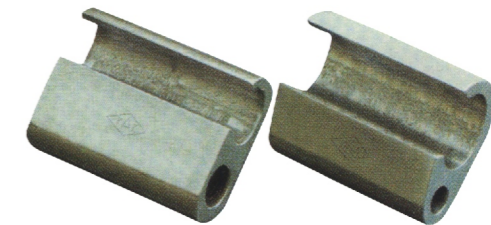
Connector press type H



CPTO type



Connector press CPTG type

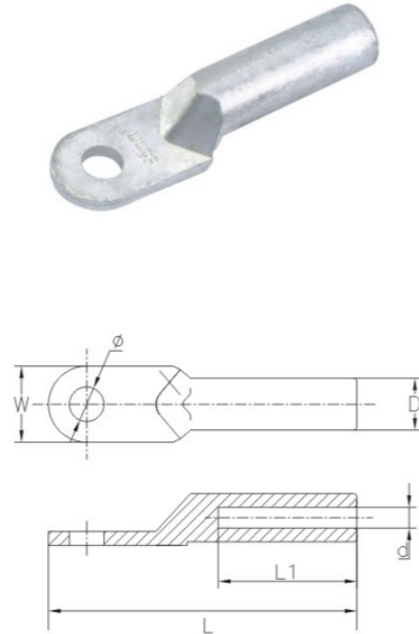


Modle	Hole1 mm ²	Hole2 mm ²	Dimensions(mm)		
			A	B	L
CPTH 35-35	16-35	16-35	17.5	23.8	38
CPTH 35-70	16-35	35-70	17.8	26	46
CPTH 70-70	35-70	35-70	20.6	30.5	47
CPTH 120-120	70-120	70-120	22.7	36.5	52
CPTH 70-150	35-150	70-150	23	34.5	70
CPTH 150-150	70-150	70-150	25.4	39.5	70
CPTH 70-240	35-70	120-240	28	42	90
CPTH 150-247	70-150	120-240	32	46	90
CPTH 240-240	120-240	120-240	32	52	90
CPTH 300-300	150-300	150-300	32	52	100
CPTG 10-16/10-16	16-35	16-35	17.5	23.8	38
CPTG 16-35/10-16	16-35	35-70	17.8	26	46
CPTG 16-35/16-35	35-70	35-70	20.6	30.5	47
CPTG 50-70/10-16	70-120	70-120	22.7	36.5	52
CPTG 50-70/16-35	35-150	70-150	23	34.5	70
CPTG 50-70/50-70	70-150	70-150	25.4	39.5	70
CPTG 70-150/50-70	35-70	120-240	28	42	90
CPTG 70-150/70-150	70-150	120-240	32	46	90
CPTG 150-240/70-150	120-240	120-240	32	52	90
CPTG 150-240/150-240	150-300	150-300	32	52	100

1.3 DL Aluminium Lug

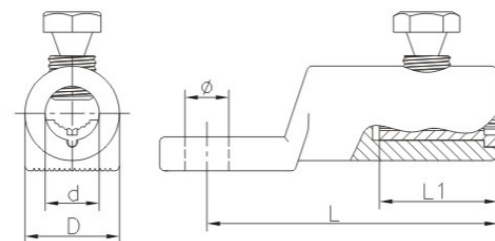
HE Code	Dimensions(mm)						pcs/
	Φ	D	d	L	L1	W	
DL-10-10	8.5.5	1010	5.25.2	6565	3030	1616	960/13960/13
DL-16	8.5	1010	6.16.1	7070	3131	1616	960/13960/13
DL-255	8.58.5	1212	7.17.1	7575	3535	1818	720/12720/12
DL-355	10.510.5	1414	8.58.5	8585	3838	20.520.5600/15600/15	
DL-50	10.510.5	166	9.89.8	9090	4242	2323	4360/138/21
DL-700	12.512.5	1818	11.511.5	102102	4747	2626	300/14360/13
DL-955	12.512.5	2121	13.513.5	112112	5151	2828	240/16300/14
DL-120	14.514.5	2323	15.015.0	120120	5353	3030	180/15240/16
DL-150	14.514.5	2525	17.017.0	126126	5685	34	4120/138/22
DL-185	16.516.5	2727	18.618.6	133133	5856	3737	120/15180/15
DL-240	16.516.5	3030	21.521.5	140140	6058	4040	48/16120/13
DL-300	18.018.0	3434	24.024.0	165165	6660	5050	80/19120/15
DL-400	21.021.0	3838	27.027.0	178178	7666	5050	72/2048/16
DL-500	21.021.0	4545	30.030.0	200200	8576	60	48/2180/19
DL-630	21.021.0	5050	34.234.2	225225	8585	8080	48/222/20

Material: aluminum



1.4 BLMT Aluminium Bolt Lug

HE Code	Dimensions(mm)					Cross section mm ²	Bolt
	Φ	D	d	L	L1		
BLMT-25/95	13/175	240	12.8.2	605	300	25-956	160/13
BLMT-35/150	13/17	280	15.8.1	860	351	35-15016	10/13
BLMT-95/240	13/17/215	3312	20.0.1	1125	6035	95-2408	220/12
BLMT-120/300	13/170.5	374	24.05	1155	658	120-3000.5	20/15

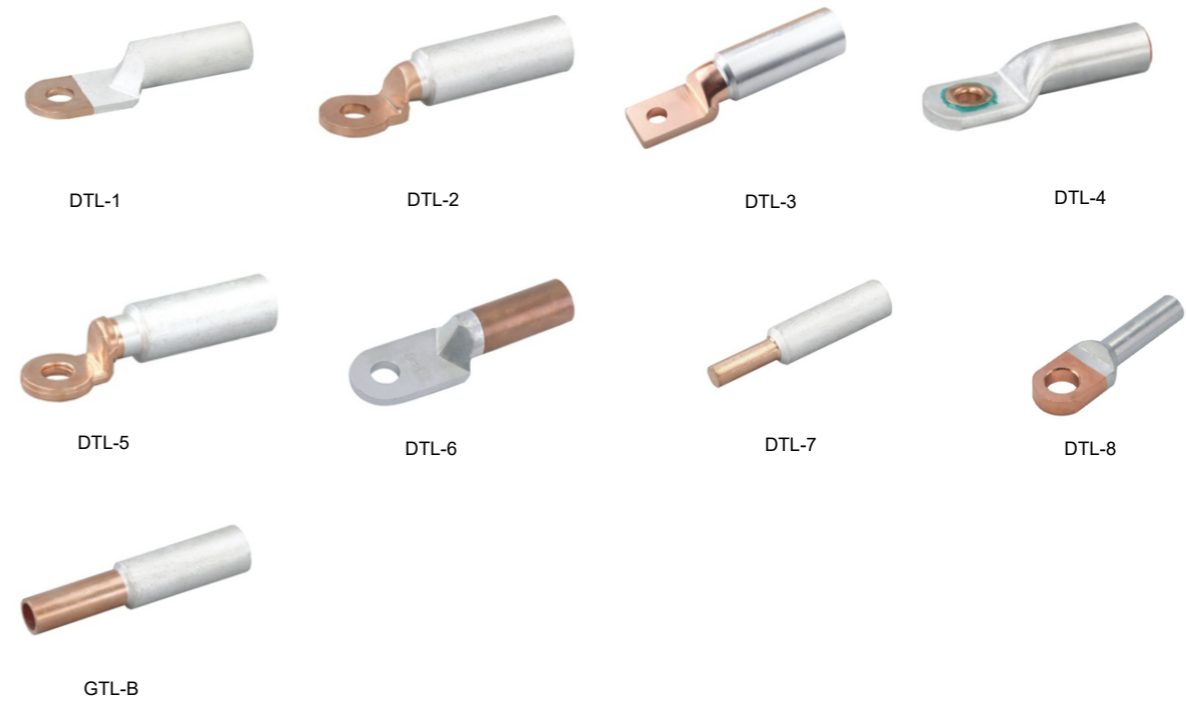


Material: aluminum and Electro tin plated.

1.5 DTL Aluminium Lug

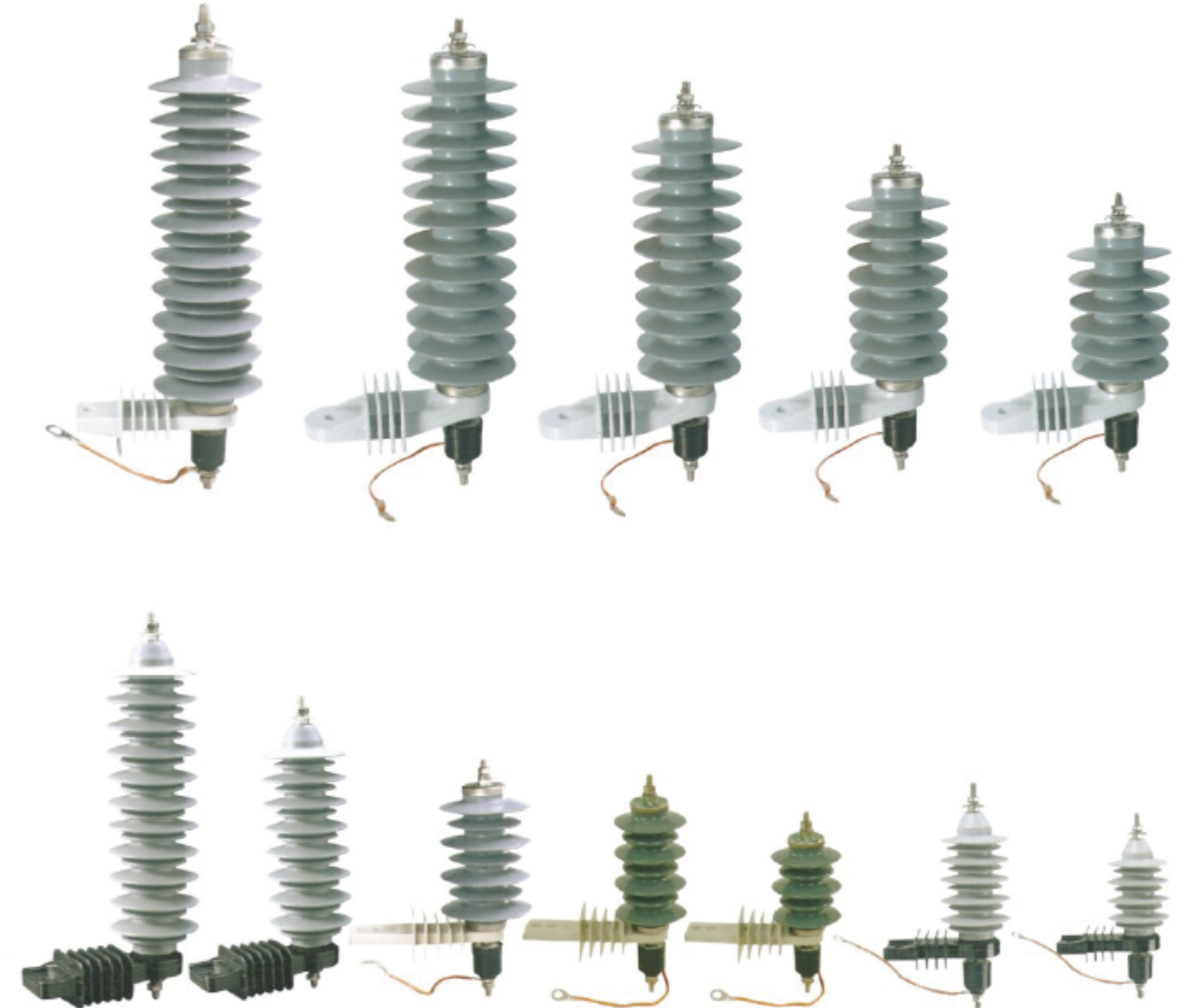
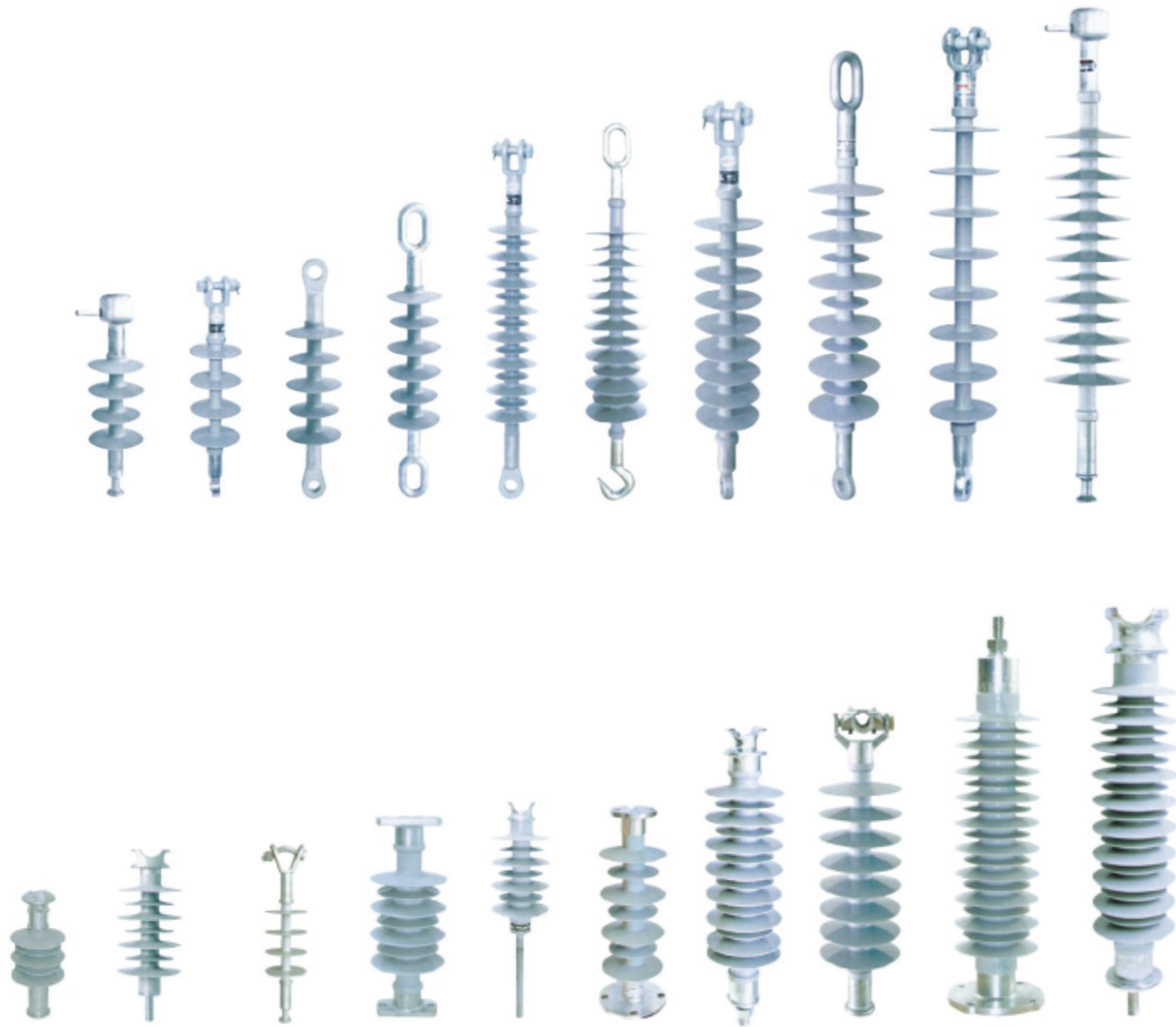
HE Code	Cross section (mm ²)
DTL-1	10-800
DTL-2	10-630
DTL-3	10-300
DTL-4	35-400
DTL-5	16-500
DTL-6	10-500
DTL-7	16-240
DTL-8	35-400
GTL	16-500

Material: aluminum & copper



14 12-36KV Polymer Insulator

15 3-66KV Arrester 5KA/10KA



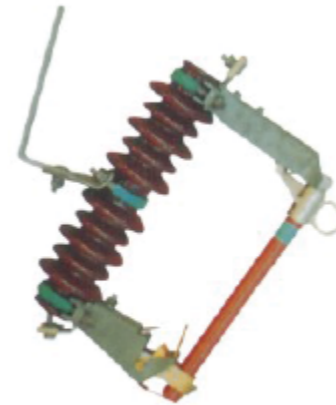
16 High-Voltage Fuse Cut out



10KV-15KV



12KV-15KV



11KV-15KV



10KV-15KV



15KV-27KV



15KV-27KV



15KV-27KV



10KV-15KV



24KV-27KV



24KV-27KV



24KV-27KV



12KV-15KV



33KV-36KV



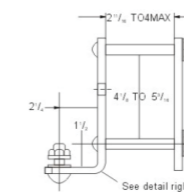
33KV-36KV



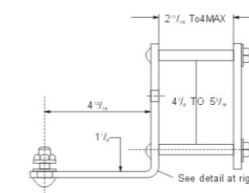
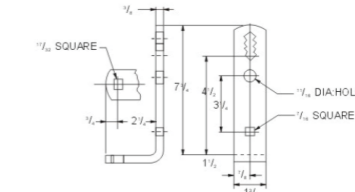
33KV-36KV



33KV-36KV



NEMAType B Mounting Bracket-Adjustable for 3 "x4" to 4 "5" Crossarm



Extended Mounting Bracket-Adjustable for "x4" to 4 "x5" Crossarm

PRODUCT DISPLAY



Twin Eye Nuts



Y Ball Clevis



Clevis Bolts



Secondary Racks



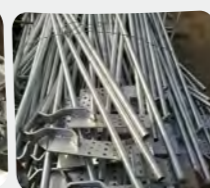
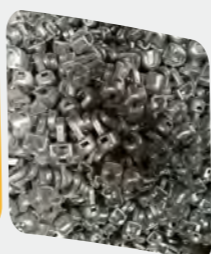
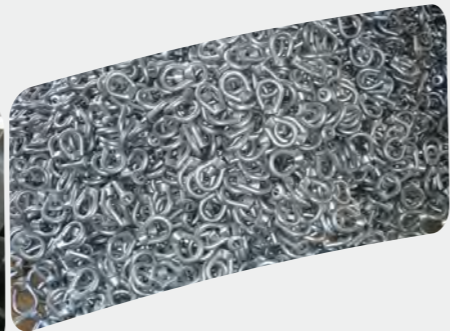
Core Clustered Tension Clamps



Suspension Clamps



Hot Line Clamps



Hook Nuts



Thimble Clevis



U Shape Nails



Tunnel Bolts



Insulation Aluminum Clamps



Current Transformer

ALLWIN
Certification

Quality Management System Certification

This is to certify that

Shanghai Herrajes Industry Co., Ltd

Company Registered Address: K34017, Building 5, No. 269 Yushi Road, Yongfeng Street, Songjiang District, Shanghai
Business Address: 618, New Songjiang Road, 1234, Songjiang District, Shanghai

Its Quality Management System Complies With
GB/T19001-2016/ISO9001:2015

Scope Of Certification: Productions & Sales of Electric Products, Plastic accessories and Hardware Fittings

Certificate No: 4622102278805 Unified Social Credit Code: 913101203323491103
Date Of Issue: 2023-01-20 The Certificate is Valid Until: 2026-01-19

Issue: 上海新耀

Labeling Plan

Inspection Plan

Third Party

The information and validity of this certificate can be found on the website of the national certification and accreditation administration <http://www.cnca.gov.cn>. It shall be used simultaneously with the notice of suspension and audit conclusion within the specified validity period.

Hangzhou Aowei Standard Technical Service Co., Ltd
Mailbox: 50370441@qq.com CNCA Approval No: CNCA-R-2018-462
Address: Room 516, Building 1, Wuxing Yumao, Xihu District, Hangzhou City, Zhejiang Province